

Stokies Stride Out Stoke-on-Trent Walking Festival

Sunday 15 to Sunday 29 October 2017

Welcome to Stokies Stride Out: Stoke-on-Trent's first ever walking festival.

Join us over two weeks this autumn for more than 80 free, fun and friendly guided walks, all led by experienced walk leaders. There's something for everyone in this year's festival; whatever your age, ability or interests.

Stokies Stride Out is all about getting local residents outdoors and exploring our fascinating city on foot. Autumn is a great time to walk through our varied urban landscape, fantastic green spaces and amazing industrial scenery. Stoke-on-Trent has so much to offer; we hope the festival will help you discover some of the city's hidden gems.

All the walks are led by knowledgeable local guides, including historians, naturalists, musicians and entertainers who will make sure the walks are interesting and fun. Listen to our storyteller, sing along with our ukulele band, learn how to orienteer... and so much more.

The festival is also an opportunity for you to meet new people and make new friends, while enjoying all the health and fitness benefits of taking a walk in the fresh air. Plus you can find out about walking groups who meet regularly in your local area.

We really hope you enjoy the programme of events and activities that has been put together and hope that Stokies Stride Out becomes a regular festival on Stoke-on-Trent's events calendar.

Got a question? Get in touch...

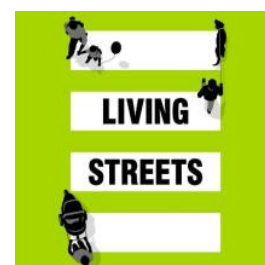
Call: 01782 234500

Email: travel.smart@stoke.gov.uk

Please check here for the latest programme updates:

www.visitstoke.co.uk

www.stoke.gov.uk/events



Stoke-on-Trent for UK City of Culture 2021

Stoke-on-Trent has been shortlisted to become UK City of Culture 2021. This is a bid for the whole city and the next major chapter in our story. There is nowhere else like us in the country.

Becoming UK City of Culture would bring huge benefits, such as more jobs and investments, as well as a better quality of life for people and businesses across the whole of North Staffordshire. But we need the support of everyone to win.

This walking festival celebrates some of the rich cultural heritage that Stoke-on-Trent has to offer and helps to showcase many of the reasons why we should become UK City of Culture in 2021.

Make sure you're backing the sot2021 bid – visit www.sot2021.com for more details or search for 'sot2021' on social media to get involved.



A few words of advice before you set off...

Getting to and from the walks

We have tried to ensure that all the walks featured in our programme are accessible by public transport. If you need help to find transport links, visit www.traveline.info or call 01782 234500.

Booking your place

For most of the walks, no booking is required and you can just turn up to take part in your chosen activity. However there are some where booking is essential. Please make sure that you book your place as soon as possible by using the contact provided.

What to wear and bring with you

Please wear comfortable and sturdy shoes, trainers or boots for all walks. The weather in October can be really changeable, so bring a warm waterproof coat or jacket with you. Don't let a bit of rain stop you from enjoying an activity.

"There is no such thing as bad weather, only inappropriate clothing." – Sir Ranulph Fiennes OBE.

You may also want to bring a drink or light snack as not all walks have refreshment facilities.

Health and safety

All walks are undertaken at your own risk. Walk leaders take every care to ensure you are safe. Stoke-on-Trent City Council and walk leaders are not responsible for any accidents or injuries that may occur as a result of taking part.

See your walk through the past

On the Exploring the Potteries website you can explore Stoke-on-Trent's history through photographs, images, maps and documents using a range of easy to use search tools. You can even use your smartphone to automatically find heritage information near to where you are.

Exploring the Potteries website is a partnership between Stoke-on-Trent City Council and Staffordshire County Council's Archives & Heritage Service.

Please access the website at www.exploringthepotteries.org.uk

Please remember...

A few of the walks are not accessible to people with limited mobility but we have tried to keep this to a minimum - please check the details for each walk.

Please arrive 10 minutes before a walk begins so that you can locate the group and be ready to start the walk at the right time.

Anyone aged 18 or under must be accompanied by an adult.

If dogs are allowed on a walk (see walk for details), they must be kept on a lead at all times.

Visit www.stoke.gov.uk/events for details of new walks added to the programme and any changes to walks.



Stokies Stride Out is an exciting joint venture between Stoke-on-Trent City Council, Living Streets and many walking groups and volunteers across the city. We would like to say a big thank you to the following individuals and organisations for their involvement:

| | |
|---|--|
| Andrew Dobraszczyk | |
| Arnold Bennett Society | www.arnoldbennettsociety.org.uk |
| Austin Knott, Stoke-on-Trent City Council | |
| Baddeley Green Walking Club | www.baddeleygreenclub.com/walking/ |
| Closer to Home | www.closetohomewalks.co.uk |
| Councillor Anthony Munday | |
| The Cultural Sisters | www.theculturalsisters.co.uk |
| Green Door | www.green-door.org.uk |
| Mental Health Mates | www.mentalhealthmates.co.uk |
| Mervyn Edwards | |
| Middleport Pottery | www.middleportpottery.org |
| Photographers Collective North Staffs | photocns.wordpress.com |
| Penkhull Ukulele Band | www.penhullukuleleband.com |
| Potteries Heritage Society | www.potteries.org.uk |
| Potteries Orienteering Club | www.potoc.org.uk |
| Potteries Outdoor Group | www.potteriesoutdoorgroup.org.uk |
| North Staffordshire Chamber of Commerce | www.staffordshirechambers.co.uk |
| Staffordshire University | www.staffs.ac.uk |
| Tony Potts, Stoke-on-Trent City Council | |
| Trentham World War One Project | www.trenthamwarmemorial.co.uk |
| The Wildlife Trust in association with Children in Need | www.staffs-wildlife.org.uk |
| | www.bbcchildreninneed.co.uk |
| World of Wedgwood | www.worldofwedgwood.com |
| Staffordshire Chambers of Commerce | www.staffordshirechambers.co.uk |
| Staff at Westport Lake Visitors' Centre | www.staffs-wildlife.org.uk |

Walk level descriptions

Easy

Routes suitable for most levels of fitness. May be suitable for conventional wheelchairs and pushchairs.

Leisurely

Routes suitable for reasonably fit people. May include some unsurfaced paths.

Moderate

Walks for people with a good level of fitness. May includes some steep paths.

Strenuous

Walks for more experienced walkers with an above average level of fitness.



Sunday 15 October

The Last Bus

Level: Easy

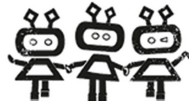
Start Time: 12pm

Length: 1 hr 30 mins

Location: Intu Potteries, Hanley ST1 1PS, meet by the blue clock

Join us on a walk from Intu Potteries to the Last Bus Exhibition at the old Hanley Bus Station.

The Last Bus is a weekend of art installed in the soon-to-be demolished Hanley Bus Station. The Artcity consortium invites applications from artists and performers of all disciplines to respond to these empty shops, pubs and walkways and create a weekend of reflection, contemplation, and discussion as the landscape of Hanley changes. So join our walk and see this amazing art work.



Stoke-on-Trent City Council, The Cultural Sisters
Dogs not allowed, Children welcome with an adult, toilets
available, refreshments available, Car park charges apply



Sunday 15 October continued

Robbie Williams Tour

Level: Easy

Start Time: 1.30pm

Length: 2 hrs

Location: Westport Lake Café, Westport Lake Road, Longport ST6 4RZ

Join us for a walk and bus ride around Tunstall and Burslem to see landmarks linked to Robbie Williams – singing all the way. Join the tour at Westport Lake where the bus will take you to Middleport to see the new streets named after some of his hits. Then on to Burslem and Tunstall for a short walk around the towns before heading back to Westport where refreshments will be available.

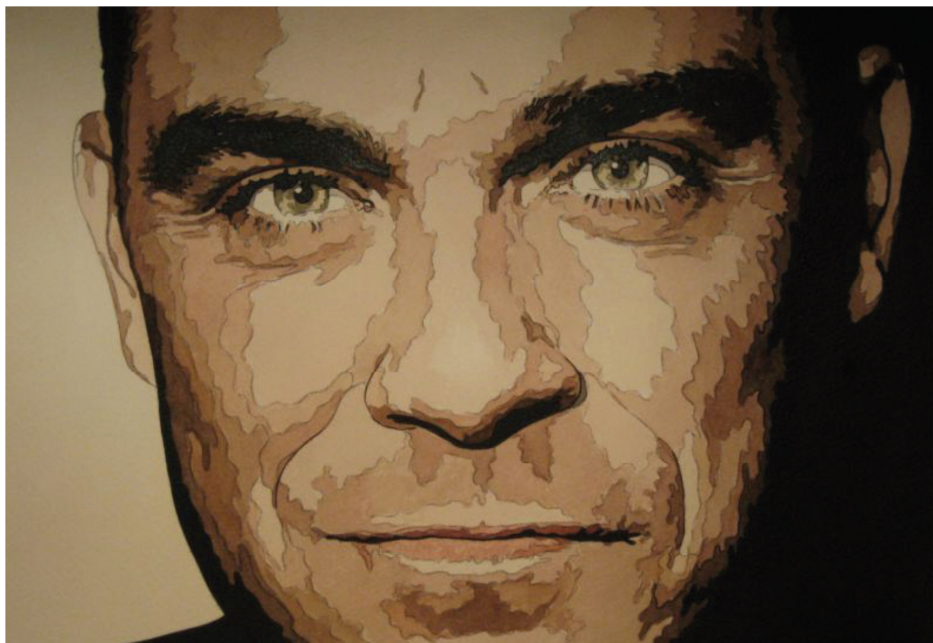
Highlights include his former homes in Tunstall and Burslem, such as The Red Lion pub; Tunstall Park and the blue plaque unveiled to celebrate his 40th birthday; Robbie's primary and secondary schools; and locations mentioned in or used as inspiration for some of his biggest songs.

Places are limited so please email travel.smart@stoke.gov.uk.



Stoke-on-Trent City Council

Dogs not allowed, Children welcome with an adult, toilets available, refreshments available.



Monday 16 October

Yoga Meditation Walk

Level: Leisurely

Start Time: 10.00am

Length: 1 hr

Location: Westport Lake Café, Westport Lake Road, Longport ST6 4RZ

Explore the basic principles of walking meditation in the beautiful surroundings of Westport Lake. We will begin the walk with some gentle yoga moves and breathing exercises and then take a gentle stroll around the lake while using mindfulness meditation techniques. We will end the walk with some gentle yoga movements and final relaxation.



Stoke-on-Trent City Council
Dogs not allowed, Children welcome with an adult, toilets available

Nosey Parker Walk

Level: Leisurely

Start Time: 10.30am

Length: 1 hr 30 mins

Location: Gladstone Pottery Museum, Longton ST3 1PQ

Join us for a town and country walk taking in some of Stoke-on-Trent's most important industrial heritage.



Closer to Home

Children welcome with an adult, Dogs allowed on a lead, Toilets available

Hanley Smartphone Heritage Trail

Level: Easy

Start Time: 11am

Length: 60 mins

Location: Potteries Museum & Art Gallery, Bethesda St, Hanley (City Centre) ST1 3DW

Please join us for a guided smartphone heritage walk around Hanley (City Centre). The purpose of the walk is to explore some of Hanley's building heritage, making use of the 'Exploring the Potteries' website (www.exploringthepotteries.org.uk) so please bring your smartphone to access the online resources available. The Museum café offers a range of drinks as well as hot and cold food for refreshments afterwards.



Stoke-on-Trent City Council

Children welcome with an adult, Dogs allowed on a lead, Toilets available, Refreshments

Monday 16 October continued

Trentham to Barlaston and the Wedgwoods

Level: Moderate

Start Time: 12pm

Length: 4 miles, approx. 3 hrs

Location: Wedgwood Museum, Barlaston ST12 9ER – meet at the entrance

Join local historian, Steve Booth, on a fascinating walk around the Wedgwood Estate and the Trent & Mersey Canal. The walk will include a complimentary 30 minute introduction to the Wedgwood Museum and British Ceramics Biennial exhibition, as well as free admission to the Museum.



World of Wedgwood, BCB, Living Streets

Children welcome with an adult, Dogs not allowed, Toilets available

WORLD *of* WEDGWOOD

Worker 'Alf Hour

Level: Easy

Start Time: 12.30pm

Length: 30 mins

Location: Civic Centre, Glebe Street, Stoke ST4 1HH

Come and explore the beautiful Trent & Mersey Canal during your lunch break. You never know... it could become a new lunchtime habit.



Stoke-on-Trent City Council

Wheelchair accessible

Pools and Parks Walk

Level: Moderate

Start Time: 1:30pm

Length: 5 miles, 2 hrs

Location: Fenton Town Hall, Baker Street, Fenton ST4 3BX

Come along to a combined heritage and nature walk, taking in the hidden green gems of Cockster Brook, Smith Pool and Glebedale Park.



Stoke-on-Trent City Council

Children welcome with an adult, walking shoes/boots recommended,
Dogs allowed on a lead, Toilets available

Monday 16 October continued

Hanley Park Restoration Walk

Level: Easy

Start Time: 2pm

Length: 45 to 60 mins

Location: Norfolk Street Medical Centre, Shelton ST1 4PB – meet in reception

Take a canal-side walk along the Caldon Canal and a look at the regeneration work taking place around the park as part of the £4.5m restoration project.



Closer to Home

Children welcome with an adult, Dogs allowed on a lead, Toilets available

Tuesday 17 October

Hilltop Walk, Fenpark

Level: Moderate

Start Time: 10.30am

Length: 1 hr

Location: Fenton Park Methodist Church, Fenpark Road, Fenton ST4 2NR

Take a countryside walk through parks and woodland, exploring the beautiful scenery and great views.



Closer to Home

Children welcome with an adult, Pushchair accessible, Dogs allowed on a lead, Toilets available, Refreshments available

Newstead Woods Nature Trail

Level: Moderate

Start Time: 11am

Length: 1hr 30 mins

Location: Cuckoo Pub, Barlaston Road, Blurton ST3 3LD

Take a woodland walk around Newstead Woods - best in dry weather as paths can be muddy.



Closer to Home

Children welcome with an adult, walking shoes/boots recommended, Dogs allowed on a lead, Toilets available

Westport Lake Walk

Level: Easy

Start Time: 2pm

Length: 1 hr

Location: Westport Lake Café, Westport Lake Road, Longport ST6 4RZ

Join us on a flat canal, lake and woodland walk at one of the city's most popular local beauty spots. Lakeside and canal paths are wheelchair friendly.



Closer to Home

Wheelchair accessible, Children welcome with an adult, Pushchair accessible, Dogs allowed on a lead, Toilets available

Tuesday 17 October continued

Arnold Bennett's Bursley

Level: Easy

Start Time: 2pm

Length: 1 hr

Location: Swan Bank Methodist Church, Swan Square, Burslem ST6 2AA

Join us for short walk around some of Arnold Bennett's fictional locations in the mother town of the Potteries, historic Burslem.



THE
ARNOLD
BENNETT
SOCIETY

Arnold Bennett Society

Car park charges apply, Wheelchair accessible Pushchair accessible,
Dogs allowed on a lead, Toilets available, Refreshments available

Understanding Places

Level: Easy

Start Time: 4pm

Length: 2 hrs

Location: The Clock Tower, Tower Square, Tunstall ST6 5DL

Have you ever wondered why some places are successful and others not? Why some places attract visitors and businesses while others have declined? Why some places feel safe and others decidedly dodgy? This afternoon stroll around Tunstall will look at the qualities that make good places and poke fun at the real world.



Potteries Heritage Society

Car park charges apply, Wheelchair accessible, Pushchair accessible, Dogs
allowed on a lead, Toilets available

Wednesday 18 October

Nordic Walking

Level: Easy

Start Time: 10.30am

Length: 2 hours

Location: Central Forest Park (meet in car park), Chell St, Sneyd Green, Hanley ST1 6BB

Come along to a fun walk where you'll learn how to use walking poles in a relaxed Nordic Walking session. Nordic Walking enhances ordinary walking, making something we learn to do as babies twice as effective. Not suitable for wheelchair users.



Stoke-on-Trent City Council

Dogs not allowed

Tunstall Park Walk

Level: Easy

Start Time: 11am

Length: 1 hr

Location: Floral Hall, Tunstall Park, Tunstall ST6 6EE

Join us for a sociable stroll along the greenways surrounding the park, followed by a chance to sample the delights of the park's popular café.



Closer to Home

Children welcome with an adult, Pushchair accessible, Dogs allowed on a lead,
Toilets available, Refreshments available

Worker 'Alf Hour

Level: Easy

Start Time: 12.30pm

Length: 30 mins

Location: Moat House Hotel, Festival Way, Etruria ST1 5BQ

Come and explore Festival Park and some of the hidden remnants of the 1986 National Garden Festival.



Staffordshire
Chambers of
Commerce

Stoke-on-Trent City Council, Staffordshire
Chambers of Commerce, Living Streets
Dogs not allowed, toilets available.

Wednesday 18 October continued

Staffordshire University Midweek Mile Plus

Level: Easy

Start Time: 12:00 – 1:00pm

Length: 1 hour

Location: Staffordshire University, Leek Road, Shelton ST4 2DF – meet at Brindley Building Reception

Autumn is a beautiful time to discover stunning Hanley Park, one of the city's hidden gems. So what are you waiting for? Get your Stokie Stride on!



Staffordshire University, Living Streets; Car park charges apply, Children welcome with an adult, Dogs allowed on a lead, Toilets available; Suitable for wheelchair users

Joiner's Square Walk

Level: Easy

Start Time: 12.45pm

Length: 1 hr

Location: Joiner's Square Community Centre, Cornes Street, Joiner's Square ST1 3JA

Come along for a gentle community walk, taking in the nearby Trent Mill Nature Reserve.



Closer to Home

Wheelchair accessible, Children welcome with an adult, Pushchair accessible, Dogs allowed on a lead, Toilets available

Hanchurch and Beyond

Level: Moderate

Start Time: 1pm

Length: 1 hr 30 mins

Location: Poacher's Cottage Pub, Stone Road, Trentham ST4 8AA

Join us on a walk taking in some of the parkland around the Trentham Estate. Please note it does not include entry to the Gardens. Some paths are steep.



Closer to Home; Children welcome with an adult, walking shoes/boots recommended, Dogs allowed on a lead, Toilets available

Wednesday 18 October continued

The Two Universities Way

Level: Moderate

Start Time: 2pm

Length: 5 miles, approx. 2 hrs

Location: Stoke-on-Trent Railway Station, Station Road ST4 2AB – meet outside the main entrance

Travel along a green route from Staffordshire University to Keele University via canal towpaths, off-road greenways and pedestrian friendly pavements. Walkers can return to the start point on the No. 25 bus from Keele University, which runs every 30 minutes. Free refreshments will be available at Keele University.



Living Streets, Keele University

Car park charges apply, walking shoes/boots recommended, Dogs allowed on a lead, Toilets available

Twilight Photowalk

Level: Easy

Start Time: 6pm

Length: 1 hr 30 mins to 2 hrs

Location: Art Stop, 108 Church Street, Stoke ST4 1BU

Photographers of all abilities (amateur, experienced, hobbyist or professional) are invited to come on a circular photowalk around Stoke town at twilight. Capture Stoke at night, with street light, shop lights, signage and light trails from long exposure photographs using tripods.



Photographers' Collective North Staffs

Toilets and refreshments available at Art Stop (start and finish point)

Thursday 19 October

Nordic Walking

Level: Easy

Start Time: 10.30am

Length: 2 hours

Location: Floral Hall, Tunstall Park (Victoria Park), Queens Avenue, Tunstall ST6 6DY

Come along to a fun walk where you'll learn how to use walking poles in a relaxed Nordic Walking session. Nordic Walking enhances ordinary walking, making something we learn to do as babies twice as effective. Not suitable for wheelchair users.



Stoke-on-Trent City Council
Dogs not allowed

Longton Greenways

Level: Leisurely

Start Time: 11am

Length: 1 hr 30 mins

Location: Belgrave Medical Centre, Belgrave Road, Dresden ST3 4LR

Join us for a walk around Longton Park and Florence Greenway, followed by free refreshments at the surgery. Includes some inclines



Closer to Home

Children welcome with an adult, Pushchair accessible, Dogs allowed on a lead,
Toilets available

Sandyford Fire Station Walk

Level: Leisurely

Start Time: 11am

Length: 1 hr 15 mins

Location: Sandyford Community Fire Station, Marlborough Way off Reginald Mitchell Way, Sandyford ST6 5ED - meet inside

Come along to our weekly sociable walk following various routes through Sandyford, Goldenhill and Tunstall. Free refreshments available after the walk.



Closer to Home

Children welcome with an adult, Pushchair accessible, Dogs allowed on a lead,
Toilets available

Thursday 19 October continued

Park Hall Walk

Level: Leisurely

Start Time: 11am

Length: 1 hr 15 mins

Location: Park Hall Country Park, Bolton Gate Car Park, Leek Road, Weston Coyney ST3 5BD

Park Hall Country Park has a varied landscape of sandstone canyons, open heathland, hay meadows, woodland and wetland areas, as well as a variety of wildlife. Some paths can be steep.



Closer to Home

Children welcome with an adult, Pushchair accessible, Dogs allowed on a lead, Toilets available

Stubbs Walks

Level: Easy

Start Time: 11am and 1.45pm

Length: 1 hr

Location: Noah's Ark pub, Hartshill Road ST4 7NX

Join us for a pleasant walk in a conservation area on the edge of Newcastle town centre. Local history expert, Reg Edwards, is on hand to answer all your questions about the area's development and its buildings.



Closer to Home

Wheelchair accessible, Children welcome with an adult, Pushchair accessible, Dogs allowed on a lead, Toilets available

Canals and Kilns

Level: Leisurely

Start Time: 2pm

Length: 2 hrs

Location: Spode Rose Garden, Kingsway, Stoke ST4 1JB

Take a fresh look at the evolution of Stoke and the circumstances that led a tiny hamlet to become a world centre for ceramics. The walk will follow the Trent & Mersey Canal to Etruria Junction and the Caldon Canal to Hanley Park.



Potteries Heritage Society

Car park charges apply, Wheelchair accessible, Pushchair accessible, Dogs allowed on a lead, Toilets available

Thursday 19 October continued

Ukulele Stroll

Level: Leisurely

Start Time: 7pm

Length: 2 hrs

Location: The Beehive Inn, Honeywall, Penkhull ST4 7HU

Join Penkhull's first and foremost (and only) ukulele band on a short tour of some of the area's local hostelrys. Listen and join in as the band covers a selection of pop hits spanning the last 70 years.



Penkhull Ukulele Band

Dogs allowed on a lead, Toilets available

Friday 20 October

Lineside Walk, Longton

Start Time: 10.30am

Length: 1 hr 30 mins

Location: Gladstone Pottery Museum, Uttoxeter Road, Longton ST3 1PQ

Join us for a walk towards Fenton, following a footpath beside the Crewe-Derby railway line.



Closer to Home

Wheelchair accessible, Children welcome with an adult, Pushchair accessible, Dogs allowed on a lead, Toilets Available

Photography Walk

Level: Easy

Start Time: 11am

Length: 2 hrs

Location: Burslem Park, Moorland Road, Burslem ST6 1EA – meet at the Park Pavilion

Bring along your camera and take some amazing autumn shots, with the help of our photography specialist.



Green Door

Wheelchair accessible, Children welcome with an adult, Pushchair accessible, Dogs allowed on a lead, Toilets available,

Smithpool, Fenton

Level: Leisurely

Start Time: 11.30am

Length: 1 hr 30 mins

Location: Regent Pub, Whieldon Road, Fenton ST4 4HY – meet on the car park

Take part in an eye-opening walk around a choice of local landmarks, including Smithpool Park and lake, historic Fenton Town Hall, Glebedale Hill and the Trent & Mersey Canal.



Closer to Home

Wheelchair accessible, Children welcome with an adult, Pushchair accessible, Dogs allowed on a lead, Toilets available

Friday 20 October continued

Community Night Walk – Woman's Work



**Meet at
5.45pm in the
BCB exhibition
in the China
Halls at Spode
on Kingsway,
Stoke town to
start walking
at 6pm.**

This will be a 'Reclaim the Streets' Style walk, where we will occupy the streets around Stoke, Shelton and Hanley, embarking on a special night walk together for the Woman's Work exhibition programme and is part of the Stokies Stride Out Walking Festival 2017.

This walk will start at the British Ceramics Biennial Festival at the former Spode site in Stoke and will visit places relevant to some of the significant women who have worked or are working in Stoke-on-Trent.

During the walk there will be stopping points on the way, with opportunities to hear about some of the fantastic projects and organisations working locally, and some of the activities and groups that you can get involved in.

The walk will be all on made pavements and paths. There are no steps.

The walk will end at AirSpace Gallery at around 7.15 pm with a chance to share a cup of something, warm or cool, and snacks.

Please book online at Eventbrite

<https://www.eventbrite.com/e/womans-work-community-night-walk-for-stokies-stride-out-walking-festival-tickets-37974273073>

or email or phone Penny Vincent at Staffordshire University
p.e.vincent@staffs.ac.uk mobile 07717 867306

Saturday 21 October

Orienteering at Central Forest Park

Level: Moderate

Start Times: 11am, 12 noon or 1.30pm

Length: 1hr – 2hr

Location: Central Forest Park, Chell Street, Sneyd Green ST1 6BB

Are you fairly good with maps? Or do you want to get better? Have fun finding the new marked posts in Central Forest Park near Hanley. It's all free. You'll get an attractive coloured map and help if you want it.



Potteries Orienteering Club

Children welcome with an adult, Pushchair accessible, walking shoes/boots recommended, Dogs allowed on a lead, Toilets available. Café

Trentham Heritage Walk

Level: Easy

Start Time: 11am

Length: 1 hr

Location: Trentham Parish Church car park, Park Drive, Trentham ST4 8AB

Join members of Trentham World War One Project for a short walk to discover what Trentham Village looked like 100 years ago and find out who was living there at that time.

Please note, some of this walk is beside a busy dual carriageway and there is some bumpy terrain. Places are strictly limited - to book by email travel.smart@stoke.gov.uk



Wheelchair accessible, Children welcome with an adult (minimum age 10), Pushchair accessible, Dogs allowed on a lead, Toilets available

Saturday 21 October continued

Festival Park Walk

Level: Leisurely

Start Time: 2pm

Length: 1 hr 30mins

Location: Festival Park, Ridgeway Road, Etruria ST1 5NY – meet on Morrison's car park near to the recycling bank

Explore the former Garden Festival site, Trent & Mersey Canal and surrounding areas. Includes some steps and inclines.



Closer to Home

Dogs allowed on a lead, Toilets available

Northwood to Berryhill Fields

Level: Moderate

Start time: 2pm

Length: 5 miles, 2.5 hours

Location: Northwood Stadium, Keelings Road, Stoke-on-Trent ST1 6PA (meet by the blue gates on the main car park on Keelings Road)

This circular route follows canal towpaths, quiet pavements and the Berryhill Greenway to the beautiful Berryhill Fields.



Living Streets

Car park charges apply, Dogs allowed on a lead, Toilets available, Children welcome with an adult, walking boots/shoes recommended

Sunday 22 October

Stoke Treasure Trail

Level: Easy

Start Time: 10am

Length: 2.5 miles, 2 hrs

Location: War Memorial, Kingsway Car Park, Kingsway, Stoke ST4 1JB

Can you locate the pottery pits? By solving the clues and eliminating false places on your treasure map, you should be able to solve this fictional conundrum and find the pottery pieces.



Please note, this is a self-led trail, with support on-hand if needed. Participants will be met at the start and each group will be provided with a free Treasure Trail booklet. Places are strictly limited – to book email travel.smart@stoke.gov.uk



Stoke-on-Trent City Council

Car park charges apply, Children welcome with an adult, Dogs allowed on a lead, Toilets available

On the City Edge

Level: Moderate

Start Time: 10.30am

Length: 6.5 miles, 3 hrs (add an extra 30 mins if stopping at the Top Pub in Brown Edge)

Location: Baddeley Green Working Men's Club, Adderley House, 922-924 Leek New Road, Baddeley Green ST2 7HG

This walk takes in the green valley of Norton Green, Knypersley Reservoir, Brown Edge, Stockton Brook and Baddeley Green via the Caldon Canal. The walk will be mostly easy but tough in places (the climb to Brown Edge). Free parking is available on the club car park which is situated opposite the club.



Stoke-on-Trent City Council; Dogs allowed on a lead, Bring a packed lunch, Walking boots/shoes recommended

Sunday 22 October continued

Whitfield Valley Journey Stick Walk

Level: Leisurely

Start Time: 1.30pm

Length: 1.5 miles, 1 hr 30 mins

Location: Whitfield Valley Local Nature Reserve (next to Ford Green Hall), Ford Green Road, Smallthorne ST6 1NG

Whitfield Valley Local Nature Reserve boasts a wide range of habitats: grassland, hay meadow, heathland, hedgerow, ponds and scattered trees. Ford Green reed bed is a Site of Special Scientific Interest and located at the southern end of the nature reserve, where many ducks and other water birds breed and overwinter. Use your Journey Stick to collect seeds, leaves and bark to tell the tale of your journey. Visit the Nature Centre for refreshments or borrow some binoculars to watch the birds in this fascinating walk led by a member of the City Council's Countryside Team.



Stoke-on-Trent City Council

Children welcome with an adult; Pushchair accessible, Dogs allowed on a lead, Toilets available

Goldenhill and Sandyford

Level: Easy

Start Time: 2pm

Length: 1 hr

Location: Mace Shop, Shelford Road, Sandyford ST6 5PH

Join us on a relaxed walk along the greenway followed by free drinks and healthy snacks provided by the local Residents' Association.



Closer to Home

Wheelchair accessible, Children welcome with an adult, Dogs allowed on a lead, Toilets available

Monday 23 October

Burslem Park Story Walk and Little Library Van

Level: Easy

Start Time: 10am

Length: 1 hr

Location: Burslem Park, Moorland Road, Burslem ST6 1EA – meet at the Bandstand

Join professional story teller Alan Barrett, as he embellishes this beautiful, newly refurbished park with his weird and wonderful stories. Suitable for children of all ages. The Little Library Van will also be parked at the start and finish point of the walk, giving plenty of time to visit and read.



Stoke-on-Trent City Council

Wheelchair accessible, Children welcome with an adult, Pushchair accessible, Dogs allowed on a lead, Toilets available



Monday 23 October continued

Hanley Park History Walk

Level: Leisurely

Start Time: 11am

Length: 1 hr

Location: Hanley Park, Cleveland Road, Shelton ST1 4DX – meet at the Park Pavilion

Join well-known local historian Mervyn Edwards for an entertaining and insightful History Walk around Hanley Park.

Dogs not allowed, wheelchair accessible, toilets available

Worker 'Alf Hour

Level: Easy

Start Time: 12.30pm

Length: 30 mins

Location: Civic Centre, Glebe Street, Stoke ST4 1HH

Come and explore the beautiful Trent & Mersey Canal during your lunch break. You never know, it could become a new lunchtime habit...



Stoke-on-Trent City Council
Wheelchair accessible



Monday 23 October continued

Star and Garter Walk

Level: Moderate

Start Time: 10.30am

Length: 1hr 30 mins

Location: Star and Garter Pub, Lightwood Road, opposite Sussex Place, Lightwood ST3 4JS

Come along to a town and country walk, taking in some of the city's most important industrial heritage.



Closer to Home

Children welcome with an adult, walking shoes/boots recommended, Dogs allowed on a lead, Toilets available

Hem Heath Woods Walk

Level: Leisurely

Start Time: 11am

Length: 1 hrs

Location: Hem Heath Woods, Trentham ST4 8FR – meet on the car park

Come and explore Hem Heath Woods in the autumn - an urban oasis of easily accessible woodland on the edge of the city.



Green Door

Wheelchair accessible, Children welcome with an adult, Pushchair accessible, Dogs allowed on a lead, Toilets available

Wildplay with Trails

Level: Leisurely

Start Time: 1.30pm

Length: 2 hrs (drop-in activity)

Location: Whitfield Valley Nature Reserve Car Park, Ford Green Road, Smallthorne ST6 1NG

Play outdoors with all the family, with activities such as den building, bug hunting, playing on the slackline and more. Please come dressed for the weather - don't forget your wellies (or sturdy shoes), a coat and a drink.



Wildlife Trust, Children in Need

Wheelchair accessible, Children welcome with an adult, Pushchair accessible, Dogs allowed on a lead, Toilets available

Monday 23 October continued

Abbey Hulton Walks

Level: Easy

Start Time: 2pm

Length: 1hr

Location: Breathe Campus, Leek Road, Abbey Hulton ST2 8BY

Take your pick from a choice of routes, including the historic Abbey Park, Milton canal-side and Bagnall Wood.



Closer to Home

Children welcome with an adult, Pushchair accessible, Dogs allowed on a lead, Toilets available



Hanley Park Story Walk

Level: Easy

Start Time: 2pm

Length: 1 hr

Location: Hanley Park, Cleveland Road, Shelton ST1 4DX – meet at the bandstand

Join professional story teller, Alan Barrett, as he explores the park and tells his weird and wonderful stories. Suitable for children of all ages.



Stoke-on-Trent City Council

Wheelchair accessible, Children welcome with an adult, Pushchair accessible, Dogs allowed on a lead,

Toilets available

Hanley Park Restoration Walk

Level: Easy

Start Time: 2pm

Length: 1 hr

Location: Norfolk Street Medical Centre, Shelton ST1 4PB – meet in reception

Take a canal-side walk along the Caldon Canal and a look at the regeneration work taking place around the park as part of the £4.5m restoration project.



Closer to Home

Children welcome with an adult, Dogs allowed on a lead, Toilets available

Tuesday 24 October

Nordic Walking

Level: Easy

Start Time: 10.00am

Length: 2 hours

Location: Westport Lake Café, Westport Lake Road, Stoke-on-Trent ST6 4RZ

Come along to a fun walk where you'll learn how to use walking poles in a relaxed Nordic Walking session. Nordic Walking enhances ordinary walking, making something we learn to do as babies twice as effective. Not suitable for wheelchair users



Stoke-On-Trent City Council
Dogs not allowed, Children welcome

Fenpark Hilltop Walk

Level: Moderate

Start Time: 10.30am

Length: 1 hr

Location: Fenton Park Methodist Church, Fenpark Road, Fenton ST4 2NR

Join in this countryside walk through Fenton's parks and woodland to enjoy beautiful scenery and great views. Refreshments available.



Closer to Home

Children welcome with an adult, Pushchair accessible, Dogs allowed on a lead,
Toilets available

Newstead Woods Nature Trail

Level: Moderate

Start Time: 11am

Length: 1 hr 30 mins

Location: Cuckoo Pub, Barlaston Road, Blurton ST3 3LD

Take a woodland walk around Newstead Woods - best in dry weather as paths can be muddy.



Closer to Home

Children welcome with an adult, Walking shoes/boots recommended, Dogs
allowed on a lead, Toilets available

Tuesday 24 October continued

Ceramic Saunters

Level: Easy

Start times: various

Length: various

These easy walks, taking in Hanley Park and the Caldon Canal, link important historic sites hosting family-friendly British Ceramics Biennial exhibitions. Participants can choose to walk all or part of the route.

| | | | |
|---|--|-----------|--|
| Spode Museum Trust Heritage Centre (Visitor Centre) Elenora Street, Stoke ST4 1QQ |  | d.11:00am |  |
| Spode China Hall Welcome Desk | | d.11:05am | |
| Stoke-on-Trent Railway Station | | d.11:20am | |
| Emma Bridgewater Factory (Courtyard) Lichfield Street, Hanley ST1 3EJ | | a.11:45am | |
| Emma Bridgewater Factory (Courtyard) | | d.1:00pm | |
| The Potteries Museum & Art Gallery (Foyer) City Central Library is next door. Bethesda Street, City Centre ST1 3DW | | a.1:15pm | |

Times are approximate, depending on size and speed of walking group.



BCB and Stoke-on-Trent City Council

Wheelchair accessible, Dogs not allowed, Children welcome with an adult, Pushchair accessible, Toilets available

Tuesday 24 October continued



Westport Lake Walk

Level: Easy

Start Time: 2pm

Length: 1 hr

Location: Westport Lake Café, Westport Lake Road, Longport ST6 4RZ

Join us on a flat canal, lake and woodland walk at one of the city's most popular local beauty spots. Lakeside and canal paths are wheelchair friendly.



Closer to Home; Wheelchair accessible, Children welcome with an adult, Pushchair accessible, Dogs allowed on a lead, Toilets available

Wednesday 25 October

Get Wild in Hem Heath Woods

Level: Leisurely

Start Time: 10am

Length: 2 hrs 30 mins

Location: Hem Heath Nature Reserve, Longton Road, Trentham ST4 8FR – Meet on the car park

Are you aged between 8-13 years? Then come with us on a woodland adventure and GetWild. We'll explore the woods, build dens and light a campfire. Ask your parents to drop you off at the car park at 10am and we'll return after our adventure at 12.30pm for them to pick you up again.

Don't forget to wear warm layers and a pair of sturdy shoes or wellies as we'll be outdoors, and bring a drink and some snacks. To book your place, visit www.staffs-wildlife.org.uk



Staffordshire Wildlife Trust, Children in Need

Children welcome, Pushchair accessible, walking shoes/boots recommended

Nordic Walking

Level: Easy

Start Time: 10.30am

Length: 2 hours

Location: Central Forest Park (meet in car park), Chell St, Sneyd Green, Hanley ST1 6BB

Come along to a fun walk where you'll learn how to use walking poles in a relaxed Nordic Walking session. Nordic Walking enhances ordinary walking, making something we learn to do as babies twice as effective. Not suitable for wheelchair users.



Stoke-on-Trent City Council

Dogs not allowed

Wednesday 25 October continued

Tunstall Park Walk

Level: Easy

Start Time: 11am

Length: 1 hr

Location: Floral Hall, Tunstall Park, Tunstall ST6 6EE

Join us for a sociable stroll along the greenways surrounding the park, followed by a chance to sample the delights of the popular café.



Closer to Home

Children welcome with an adult, Pushchair accessible, Dogs allowed on a lead, Toilets available

Staffordshire University's Midweek Mile

Level: Easy

Start Time: 12pm

Length: 1 mile, 30 mins

Location: Brindley Building, Staffordshire University, Leek Road, Shelton ST4 2DF – meet in reception

Join some of the university staff on their weekly walk around Hanley Park. All welcome.



Staffordshire University

Car park charges apply, Wheelchair accessible, Children welcome with an adult, Pushchair accessible, Dogs allowed on a lead, Toilets available

Worker 'Alf Hour

Level: Easy

Start Time: 12.30pm

Length: 30 mins

Location: Moat House Hotel, Festival Way, Etruria ST1 5BQ

Come and explore Festival Park and some of the hidden remnants of the 1986 National Garden Festival.



Staffordshire
Chambers of
Commerce

Stoke-on-Trent City Council, Staffordshire
Chambers of Commerce, Living Streets
Dogs not allowed, toilets available, Wheelchair
accessible

Wednesday 25 October continued

Joiner's Square Walk

Level: Easy

Start Time: 12.45pm

Length: 1 hr

Location: Joiner's Square Community Centre, Cornes Street, Joiner's Square ST1 3JA

Join us for a gentle community walk, including the nearby Trent Mill Nature Reserve.



Closer to Home

Wheelchair accessible, Children welcome with an adult, Pushchair accessible, Dogs allowed on a lead, Toilets available

Hanchurch and Beyond

Level: Leisurely

Start Time: 1pm

Length: 1hr 30mins

Location: Harvester - Poacher's Cottage, Stone Road, Trentham ST4 8AA

Come and explore some of Hanchurch's historic parkland and grounds. Please note, the walk does not include access to Trentham Gardens.



Closer to Home

Children welcome with an adult, walking shoes/boots recommended, Dogs allowed on a lead, Toilets available

Wildplay in Hem Heath Woods

Level: Leisurely

Start Time: 1.30pm

Length: 2 hrs (drop-in activity)

Location: Hem Heath Nature Reserve car park, Longton Road, Trentham ST4 8FR

Follow the signs from the car park to walk into the woods for Wildplay at the glade where we will be den building, bug hunting, playing on the slackline and more. Please come dressed for the weather - don't forget your wellies (or sturdy shoes), a coat and a drink.



Staffordshire Wildlife Trust, Children in Need

Wheelchair accessible, Children welcome with an adult,

Pushchair accessible, Dogs allowed on a lead, Toilets available

Wednesday 25 October continued

Musical walk – Walking to New Orleans

Level: Leisurely

Start time: 7pm

Length: 2 hours

Location: Kingsway Car Park (White Star End), Stoke ST4 1JH

We will sing walking songs and sometimes stop and listen. Expect a few surprises!

Led by local community choir leaders and the spirit of Fats Domino.

Wheelchair accessible, Dogs allowed on a lead, Toilets available, Pushchair accessible

Thursday 26 October

Ceramic Saunters

Level: Easy

Start time: various

Length: various

Location: various

These easy walks, taking in Hanley Park and the Caldon Canal, link important historic sites hosting family-friendly British Ceramics Biennial exhibitions. Participants can choose to walk all or part of the route.

| | | | |
|---|--|-----------|--|
| Spode Museum Trust Heritage Centre (Visitor Centre) Elenora Street, Stoke ST4 1QQ |  | d.11:00am |  |
| Spode China Hall Welcome Desk | | d.11:05am | |
| Stoke-on-Trent Railway Station | | d.11:20am | |
| Emma Bridgewater Factory (Courtyard) Lichfield Street, Hanley ST1 3EJ | | a.11:45am | |
| Emma Bridgewater Factory (Courtyard) | | d.1:00pm | |
| The Potteries Museum & Art Gallery (Foyer) City Central Library is next door. Bethesda Street, City Centre ST1 3DW | | a.1:15pm | |
| | | | |

Times are approximate, depending on size and speed of walking group.



BCB and Stoke-on-Trent City Council

Wheelchair accessible, Dogs not allowed, Children welcome with an adult, Pushchair accessible, Toilets available

Thursday 26 October continued

Nordic Walking

Level: Easy

Start Time: 10.30am

Length: 2 hours

Location: Floral Hall, Tunstall Park (Victoria Park), Queens Avenue, Tunstall ST6 6DY

Come along to a fun walk where you'll learn how to use walking poles in a relaxed Nordic Walking session. Nordic Walking enhances ordinary walking, making something we learn to do as babies twice as effective. Not suitable for wheelchair users.



Stoke-on-Trent City Council
Dogs not allowed

Trentham Canal Walks

Level: Leisurely

Start Time: 11am

Length: 1 hr or 1hr 30 min

Location: The Toby Carvery, Longton Road, Trentham ST4 8BU

Take your pick from two very popular canal-side walks to the plume of Feathers pub at Barlaston, with the longer walk returning by a different route.



Closer to Home; Wheelchair accessible, Children welcome with an adult,
Pushchair accessible, Dogs allowed on a lead, Toilets available

Sandyford Fire Station Walk

Level: Leisurely

Start Time: 11am

Length: 1 hr 15 mins

Location: Sandyford Community Fire Station, Marlborough Way off Reginald Mitchell Way, Sandyford ST6 5ED - meet inside

Come along to our weekly sociable walk following various routes through Sandyford, Goldenhill and Tunstall. Free refreshments available after the walk.



Closer to Home; Children welcome with an adult, Pushchair accessible, Dogs allowed on a lead, Toilets available

Thursday 26 October continued

Mapping Walk

Level: Easy

Start Time: 11am

Length: 1 hr 30 mins

Location: Green Door Hub, Westport Lake, Westport Lake Road, Longport ST6 4RZ

Before Google Maps we used maps to find our way around. Come and have some fun map reading the old fashioned way with a stroll around Westport Lake.



Green Door

Wheelchair accessible, Children welcome with an adult, Pushchair accessible, Dogs allowed on a lead, Toilets available

Meir Greenway Walk

Level: Easy

Start Time: 11am

Length: 1 hr

Location: Potter's Bar Pub, Lysander Road, Meir Park ST3 7TW

Join us on a walk exploring Meir's parks and woodlands.



Closer to Home

Children welcome with an adult, Pushchair accessible, Dogs allowed on a lead, Toilets available

Bear Hunt

Level: Leisurely

Start Time: 1.30pm

Length: 2 hrs

Location: Queen's Park, Queen's Park Avenue, Longton ST3 4AU – meet by the playground

We're going on a bear hunt to find the secret bear! Take part in craft activities, make bear dens and a enjoy story adventure. Feel free to bring your teddies along. Please come dressed for the weather - don't forget your wellies (or sturdy shoes), a coat and a drink. Places are limited so please email travel.smart@stoke.gov.uk.



Wildlife Trust, Children in Need

Children welcome with an adult, Pushchair accessible, Dogs allowed on a lead, Toilets available

Thursday 26 October continued

Hartshill Church to Penkhull Church

Level: Easy

Start Time: 1.45pm

Length: 1 hr

Location: Noah's Ark, 350 Hartshill Road, Hartshill ST4 7NX

Join walk leader, Reg Edwards, for an easy walk on relatively flat and paved surfaces, taking in Hartshill Cemetery and part of the Hartshill Heritage Trail.



Closer to Home

Wheelchair accessible, Children welcome with an adult, Pushchair accessible, Dogs allowed on a lead, Toilets available



Friday 27 October

Smithpool Walk

Level: Leisurely

Start Time: 11.30am

Length: 1 hr

Location: Regent Pub Car Park, Whieldon Road, Fenton ST4 4HY

This is an eye-opening walk around some of Fenton's landmarks including Smithpool Park and lake, historic Fenton Town Hall, Glebedale Hill and the Trent & Mersey Canal.



Closer to Home; Wheelchair accessible, Children welcome with an adult, Pushchair accessible, Dogs allowed on a lead, Toilets available

Histrionics Walk back in time Make a present of the past

Level: Easy

Start Time: 1pm and 3pm

Length: 45 mins

Location: Civic Centre, Glebe Street, Stoke ST4 1HH

"Follow madcap Victorian historian Baskerville Oldface on an exciting, interactive theatre walk through time. Get up and get involved with stories from history as the past is vividly brought to life in 60 minutes or less! Top hats and bonnets optional..."



Stoke-on-Trent City Council

Wheelchair accessible, Pushchair accessible, Children welcome with an adult

Networking Walk

Level: Easy

Start Time: Registration at 1.15pm, Walk starts at 1.30pm

Length: 30 mins

Location: Commerce House, Festival Park ST1 5BE

Staffordshire Chambers of Commerce and Stoke on Trent City Council, invite you to a led networking walk. This 30 minute lunchtime walking meeting is a fantastic opportunity to network with other local businesses. There are limited spaces to this event so please book your place through - travel.smart@stoke.gov.uk



Staffordshire
Chambers of
Commerce

Living Streets, Staffordshire Chambers of Commerce, Stoke-On-Trent City Council
Wheelchair accessible, Toilets available,
Refreshments available

Friday 27 October continued

Wildplay with Trails

Level: Easy

Start Time: 1.30pm

Length: 2 hrs (drop-in activity)

Location: Queen's Park, Queen's Park Avenue, Longton ST3 4AU – meet by the playground

Play outdoors with all the family, with activities such as den building, bug hunting, playing on the slackline and more. Please come dressed for the weather - don't forget your wellies (or sturdy shoes), a coat and a drink.



Staffordshire Wildlife Trust, Children in Need

Children welcome with an adult, Pushchair accessible, Dogs allowed on a lead, Toilets available

Longport, Stoke-on-Trent: Gateway to the sea on the Trent and Mersey Canal

Level: Easy

Start Time: 2pm

Length: 1hr 30 mins

Location: Longport Railway Station, Station Street, Longport ST6 4ND

This walk, led by Andrew Dobraszczyk, will look at some of the wharves, factories, houses and other buildings constructed at Longport after the opening of the Trent and Mersey Canal to this point in the mid 1770s.

This is an easy walk, on a flat surface, with frequent stops to look at buildings by the side of the canal and in its vicinity.

Children welcome with an adult, Pushchair accessible, Dogs allowed on a lead

Spooky Walk

Level: Easy

Start Time: 6.30pm

Length: 1 hr

Location: Green Door Hub, Westport Lake, Westport Lake Road, Longport ST6 4RZ

Join our spooky walk around parts of Westport Lake and keep an eye out for the ghosts!



Green Door, Stoke-on-Trent City Council
Dogs not allowed, Bring a torch

Saturday 28 October

Mental Health Mates

Level: Easy

Start Time: 11:00am

Length: 2 miles, 30 mins to 1 hr

Location: Westport Lake Café, Westport Lake Road, Longport ST6 4RZ

This walk is available to everyone, but particularly focuses on supporting people affected by mental health issues or a mental health condition.

Children welcome with an adult, Dogs allowed on a lead, Toilets available

Trentham Heritage Walk

Level: Easy

Start Time: 11am

Length: 1 hr

Location: Trentham Parish Church car park, Park Drive, Trentham ST4 8AB

Join members of Trentham World War One Project for a short walk to discover what Trentham Village looked like 100 years ago and find out who was living there at that time.

Please note, some of this walk is beside a busy dual carriageway and there is some bumpy terrain. Places are strictly limited - to book by email travel.smart@stoke.gov.uk



Wheelchair accessible, Children welcome with an adult (minimum age 10), Pushchair accessible, Dogs allowed on a lead, Toilets available

Saturday 28 October continued

Burslem Treasure Trail

Level: Easy

Start Time: 12 noon

Length: 2.6 miles, 2 hrs 30 mins

Location: Car park at the top of Woodbank Street, opposite Wycliffe Street, Burslem ST6 3JY

Where are the witch's riches? Molly Leigh, alleged to be a witch, was buried in St John's churchyard in Burslem in 1746. Can you locate the secret hiding place of the treasure that paid for poor Molly's grave?

Please note, this is a self-led trail with support on-hand if needed. Participants will be met at the start and each group will be provided with a free Treasure Trail booklet. Places are strictly limited – to book email travel.smart@stoke.gov.uk



Stoke-on-Trent City Council

Car park charges apply, Children welcome with an adult, Pushchair accessible, Dogs allowed on a lead, Toilets available

Festival Park Walk

Level: Leisurely

Start Time: 2pm

Length: 1 hr 30mins

Location: Festival Park, Ridgeway Road, Etruria ST1 5NY – meet on Morrison's car park near to the recycling bank

Explore the former Garden Festival site, Trent & Mersey Canal and surrounding areas. Includes some steps and inclines.



Closer to Home; Dogs allowed on a lead, Toilets available

Sunday 29 October

Trentham to Hanchurch Woods

Level: Strenuous

Start Time: 10am

Length: 6 miles, approx. 3 hrs

Location: Monkey Forest, Stone Road, Trentham, ST4 8AY - car park (free parking 10am – 6pm)

For experienced walkers to enjoy the autumn woodland colours around Trentham and Hanchurch.



Potteries Outdoor Group

Children welcome with an adult, bring packed lunch, walking shoes/boots recommended, Dogs allowed on a lead

Canals of Etruria

Level: Moderate

Start Time: 10am

Length: 2 hrs 30 mins to 3 hrs

Location: Middleport Pottery, Port Street, Middleport ST6 3PE

Come along to discover more about the industrial heritage of Middleport and Burslem.



Middleport Pottery

Dogs not allowed, Toilets available

Park Hall Hills Walk

Level: Moderate

Start Time: 11am

Length: 1.6 miles, 60 mins

Location: Park Hall Country Park Visitor Centre Car Park, Hulme Road, Weston Coyney ST3 5BH

Park Hall Hills are a prominent feature of the local landscape. Join us on this route, led by a member of the City Council's Countryside Team, as we take in the stunning panoramic views towards the Wrekin and North Wales.



Stoke-on-Trent City Council

Children welcome with an adult, walking shoes/boots recommended, Dogs allowed on a lead, Toilets available

Sunday 29 October continued

Ford Green Nature Reserve and Chatterley Whitfield Walk

Level: Moderate

Start Time: 1pm

Length: 1 hr 30 mins

Location: Ford Green Hall, Ford Green Road, Smallthorne ST6 1NG – meet on the car park

Join in this brisk walk through this local reserve, noted for its lakes and bird life. A disused colliery and a Tudor Hall are local landmarks to be explored.



Closer to Home

Pushchair accessible, Dogs allowed on a lead, Toilets available

Goldenhill and Sandyford Walk

Level: Easy

Start Time: 2pm

Length: 1 hr

Location: Mace Shop, Shelford Road, Sandyford ST6 5PH

Come along for a relaxed walk along the greenway, followed by free drinks and healthy snacks provided by the local Residents' Association.



Closer to Home

Wheelchair accessible, Children welcome with an adult, Dogs allowed on a lead, Toilets available