

Staffordshire and Stoke-on-Trent Joint Waste Local Plan 2010 - 2026



Appendices
Adopted March 2013



Contents

Appendix 1: Virtual Library	146
Appendix 2: Links with other strategies	154
Appendix 3: Replacement of Waste Local Plan policies	164
Appendix 4: The Waste Hierarchy	168
Appendix 5: Staffordshire and Stoke-on-Trent Waste Infrastructure at May 2012	169
Appendix 6: Waste Data Tables	208
Appendix 7: National Planning Policy	224

Adoption version Staffordshire and Stoke-on-Trent Joint Waste Local Plan 2010 - 2026 Appendices

Appendix 1: Virtual Library

The table below contains web links to individual documents. If reading a printed version of this Strategy please view the Objective E-Consultation Portal at <http://consult.staffordshire.gov.uk/portal/> to access this information.

The list below excludes unpublished datasets held by both Councils and LDF Consultation representations received or the earlier consultation documents and evidence base reports for the earlier stages of the LDF process (these are available on [Objective E-Consultation Portal](#)).

Table 5: Virtual Library

Submitted Joint Waste Local Plan Documents
Staffordshire and Stoke-on-Trent Joint Waste Core Strategy Publication Document Sept 2011
Publication Document Appendices Sept 2011
Representations on the Publication Document
Schedule of Minor Amendments (Jan 2012)
Regulation 30 (1)(d) Consultation Statement on Staffordshire and Stoke-on-Trent Joint Waste Core Strategy
Regulation 30 (1) (e) Statement of representations received in relation to Publication of Staffordshire and Stoke-on-Trent Joint Waste Core Strategy
Staffordshire County Council Statement of Community Involvement (SCI) Adopted June 2006
Stoke-on-Trent City Council Statement of Community Involvement (SCI) Adopted 2007
Relevant Supporting Documents
Sustainability Appraisal (SA)
Sustainability Report on Adoption of Staffordshire and Stoke-on-Trent Joint Waste Local Plan 2010 – 2026 (Jan 2013)
Sustainability Report on Adoption of Staffordshire and Stoke-on-Trent Joint Waste Local Plan - Non-technical summary (Jan 2013)
Staffordshire and Stoke-on-Trent JWCS Site Assessment Report (July 2011)
Habitats Regulations Assessment (HRA)

Relevant Supporting Documents
Habitats Regulations Assessment Report on Adoption of Staffordshire and Stoke-on-Trent Joint Waste Local Plan 2010 - 2026 (Jan 2013)
Strategic Flood Risk Assessment (SFRA)
Staffordshire and Stoke-on-Trent JWCS Strategic Flood Risk Assessment (SFRA) Report (Sept 2011)
Evidence Base Reports
Staffordshire and Stoke-on-Trent JWCS Evidence Base Report 1 - Waste Facilities (Sept 2011)
Staffordshire and Stoke-on-Trent JWCS Evidence Base Report 2 – Managing Municipal and Commercial and Industrial Wastes (Sept 2011)
Staffordshire and Stoke-on-Trent JWCS Evidence Base Report 3 – Managing Construction, Demolition and Excavation Wastes (Sept 2011)
Staffordshire and Stoke-on-Trent JWCS Evidence Base Report 4 – Maintaining Landfill Capacity (Sept 2011)
Staffordshire and Stoke-on-Trent JWCS Evidence Base Report 5 – Maintaining Hazardous Waste, Radioactive Waste, Agricultural Waste and Sewage Sludge (Sept 2011)
Locational approach of the Staffordshire and Stoke-on-Trent Joint Waste Core Strategy (Sept 2011)
Revised Evidence Base for Policy 2.1 and 2.2
Compliance Statements and assessments
PAS LDF soundness self-assessment statement
PAS legal compliance tool
PINS soundness assessment
Duty to cooperate assessment
Staffordshire and Stoke-on-Trent JWCS Equalities Impact Assessment report (SCC 2011)
Table of responses to consultation on Compliance of the JWCS with the NPPF
Assessment of Joint Waste Core Strategy Publication Document against the policies within the National Planning Policy Framework

Compliance Statements and assessments
Notification of submission
Assessment of Regional Conformity
Local Development Schemes
Staffordshire County Council Minerals and Waste Development Scheme (MWDS) Revised January 2012
Stoke-On-Trent City Council Interim Local Development Scheme 2012.
Sustainable Community Strategies
Staffordshire County Council Sustainable Community Strategy 2008 – 2023 Our County Our Vision
‘Our City, Our Future’ Community Strategy for Stoke-on-Trent
Core Documents
Planning and Compulsory Purchase Act 2004
The Town and Country Planning (Local Development) (England) Regulations 2004
The Town and Country Planning (Local Development) (England) (Amendment) Regulations 2008
The Town and Country Planning (Local Development) (England) (Amendment) Regulations 2009
The Environmental Assessment of Plans and Programmes Regulations 2004
The Conservation of Habitats and Species Regulations 2010
UK Climate Change Act 2008
Letter from Steve Quartermain, CLG Chief Planner dated 6th July 2010: Revocation of Regional Strategies
Letter from Steve Quartermain, CLG Chief Planner dated 10th November 2010: Abolition of Regional Strategies
Localism Act 2011
The Town and Country Planning (General Permitted Development) Order 1995
The Town and Country (England) Development Management Procedure Order 2010

Core Documents
The Planning Act 2008
The Town and Country Planning (Use Classes) Order 1987
The Town and Country Planning (Use Classes) (Amendment) (England) Order 2010
Circular 05/2005 Planning Obligations
Community Infrastructure Levy Regulations 2010
Community Infrastructure Levy (Amendment) Regulations 2011
Countryside and Rights of Way Act 2000
DfT Circular 2/2007: Planning and the Strategic Road Network
Landfill Regulations (2002)
Letter from the Chief Planning Officer dated 31 March 2011: Update to PPS10 paragraph 1 and Annex C to ensure that it incorporates the new waste hierarchy set out in the revised Waste Framework Directive (2008/98/EC)
'Planning for Growth' Ministerial Statement (March 2011)
The Town and Country Planning (Local Planning) (England) Regulations 2012
Examining the Soundness of Minerals and Waste Policies in Core Strategies
European Policy Documents
EU Landfill Directive 1999/31/EC (1999)
Revised EU Waste Framework Directive (2008/98/EC)
EU Renewable Energy Directive (RED) (2009)
Directive on Batteries and Accumulators (1991)
Directive on Packaging and Packaging Waste (1994)
Directive on End of Life Vehicles (ELV) (2000)
Directive on Waste, Electrical and Electronic Equipment (WEEE)
2005 Animal By-Products Regulation (EC) No. 1774/2002
2009 new Animal By-Products Regulation (EC) No. 1069/2009

Adoption version Staffordshire and Stoke-on-Trent Joint Waste Local Plan 2010 - 2026 Appendices

European Policy Documents
European Directive 2001/42/EC 'on the assessment of the effects of certain plans and programmes on the environment' (generally known as the Strategic Environmental Assessment, or SEA Directive)
European Union Directive 92/43/EEC on the conservation of natural habitats and of wild fauna and flora (the "Habitats Directive")
National Policy Documents
National Planning Policy Framework (March 2012)
Technical Guidance to National Planning Policy Framework (March 2012)
Planning Policy Statement 10: Planning for Sustainable Waste Management
Planning for Sustainable Waste Management: Companion Guide to Planning Policy Statement 10
2005 Sustainable Development Strategy- Securing the Future
UK Biodiversity Action Plan
The Government White Paper on the Natural Environment published in June 2011
Planning Obligations: Consultation (2010)
Waste Strategy for England 2007 (Defra) – May 2007
Planning for Waste Management Facilities: A research study (ODPM) – August 2004
'Designing Waste Facilities, a guide to modern design in waste' Defra/CABE
Government Review of Waste Policy in England 2011 (Defra) – 2011
Building Research Establishment Environment Assessment Method (BREEAM) guidance
National Infrastructure Plan (Oct 2010)
Commercial and Industrial Waste Survey 2009 Final Report (December 2010) Defra
The ICE Report on Demolition Protocol
Building Research Establishment(BRE) Green Guide to specification
Environment Agency's Regulatory Guidance (EPR13)Defining Waste Recovery : Permanent Deposit of Waste on Land produced in March 2010

National Policy Documents
2003 Agricultural waste estimates (Environment Agency)
Department for Communities and Local Government, 2006 based sub-regional household projections.
ONS/NOMIS, Annual Business Inquiry (2007)
2009 Commercial & Industrial Waste Survey (DEFRA, December 2010)
2006/7 C&I Waste Survey (ADAS)
National Planning Policy Framework 27 March 2012
Technical Guidance to the National Planning Policy Framework
Regional Policy Documents
West Midlands Regional Spatial Strategy - January 2008
WM RSS Phase Two Revision – Draft Preferred Option (Dec 2007)
WM RSS Phase Two Revision – Report of the Panel : September 2009
Final Report on West Midlands Waste Treatment Capacity Survey (WMRA, Golder Associates) - August 2004
West Midlands Waste Facilities – Phase 2 Future Capacity Requirements (WMRA) - November 2004
Regional Waste Scenarios Study (WMRA) - July 2005 Part 1 and Part 2
Waste Residues Report (WMRA) - June 2006
West Midlands Regional Spatial Strategy Phase 2 revision Waste Background Paper (WMRA) – January 2007
A Study into Future Landfill Capacity in the West Midlands (WMRA, Scott Wilson) - May 2007
Waste Treatment Facilities and capacity survey West Midlands Region (WMRA, SLR) - May 2007
Waste: A Future Resources for Businesses: Developing the evidence base for a targeted market intervention strategy for the West Midlands (AWM, SLR) – March 2008
The Regional Approach to Landfill Diversion Infrastructure (AWM, DTZ, SLR) - July 2009

Regional Policy Documents
West Midlands Landfill capacity study 2009 Update (WMRA, Scott-Wilson) – June 2009
Study into Commercial and Industrial Waste Arisings (ADAS) – April 2009
'C&I Waste - Opportunities for Recycling and Recovery' commissioned by Advantage West Midlands (AWM) and delivered by Waste Resources Action Programme (WRAP) published May 2010
Local Policy Documents
Staffordshire and Stoke-on-Trent Waste Local Plan (1998 – 2011) 'Saved Policies'
Staffordshire and Stoke-on-Trent Structure Plan (1996 – 2011) 'Saved Policies'
Staffordshire and Stoke-on-Trent Mineral Local Plan (1994-2006) 'Saved Policies'
Newcastle-under-Lyme and Stoke-on-Trent Core Spatial Strategy, May 2008, Adopted October 2009
Newcastle-under-Lyme and Stoke-on-Trent Urban Design Guidance Supplementary Planning Document (Adopted 9 December 2010)
Staffordshire and Stoke-on-Trent Joint Municipal Waste Management Strategy (November 2007)
Staffordshire County Council Strategic Plan 2011 - 2016
Staffordshire Transport Plan 2011 (Staffordshire County Council)
Staffordshire County Council, Supplementary Planning Guidance 'Planning for Landscape Change' (SCC Adopted 10 May 2001)
Staffordshire County Council, Supplementary Planning Guidance 'Planning for Heavy Commercial Vehicles associated with mineral or waste developments'
Stoke-on-Trent City Council Sustainability and Climate Change Supplementary Planning Document
Local Transport Plan for Stoke-on-Trent (March, 2006)
Cannock Chase AONB Management Plan 2009 - 2014
'Local List' to Validate Planning Applications
Guidelines for Transport Assessment and Travel Plans for Staffordshire January, 2008)
Supplementary Planning Guidance 'A Code of Practice for Waste Developers'

Local Policy Documents
Stoke-on-Trent City Council Statement of Planning Enforcement Policy March 2010
Staffordshire County Council Local Monitoring and Enforcement Plan July 2012
Local Evidence Base
Staffordshire County Council Climate Change report.
City of Stoke-on-Trent Strategic Housing and Employment Land Availability Assessment Summary Report, March 2008
North Staffordshire Strategic Flood Risk Assessment (SFRA) Level 1 Final Version (also Executive Summary and Appendix A – C)
Annual Monitoring Reports
Staffordshire County Council Annual Monitoring Report 2004/05
Staffordshire County Council Annual Monitoring Report 2005/06
Staffordshire County Council Annual Monitoring Report 2006/07
Staffordshire County Council Annual Monitoring Report 2007/08
Staffordshire County Council Annual Monitoring Report 2008/09
Staffordshire County Council Annual Monitoring Report 2009/10
Staffordshire County Council Annual Monitoring Report 2010/11
Stoke-on-Trent City Council Annual Monitoring Report 2005
Stoke-on-Trent City Council Annual Monitoring Report 2006
Stoke-on-Trent City Council Annual Monitoring Report 2007
Stoke-on-Trent City Council Annual Monitoring Report 2008
Stoke-on-Trent City Council Annual Monitoring Report 2009
Stoke-on-Trent City Council Annual Monitoring Report 2010
Stoke-on-Trent City Council Annual Monitoring Report 2011

Appendix 2: Links with other strategies

Table 6: Joint Waste Local Plan links with other strategies.

Joint Waste Local Plan Policy	Newcastle-under-Lyme and Stoke-on-Trent Core Spatial Strategy	'Our City, Our Future' Community Strategy for Stoke-on-Trent	A Sustainable Community Strategy for Staffordshire 2008 - 2023 'Our County, Our Vision'
<p>Policy 1 - Waste as a resource</p>	<p>Strategic Aim 3 (SA3) - To reduce the need to travel, improve accessibility and increase the opportunities for development of sustainable and innovative modes of travel to support the regeneration of the plan area by securing improvements to public transport infrastructure; and the progressive provision of park and ride and facilities to promote walking and cycling</p> <p>Strategic Aim 5 (SA5) - To foster and diversify the employment base of all parts of the plan area, both urban and rural, including development of new types of work and working lifestyles, and supporting the office development sector, new technologies and business capitalising on the inherent advantages of North Staffordshire</p>	<p>4.1f Support and encourage the growth of creative and cultural industries</p> <p>5.4d Encourage City Businesses to implement environmental improvements.</p> <p>5.5h Improve recycling opportunities through the city</p> <p>5.7c Lead by example by developing sound environmental practices and systems within the City Council</p> <p>5.7d Work with local business organisations to encourage environmental</p>	<p>Priority 'A protected, enhanced and respected environment':</p> <ul style="list-style-type: none"> Using our natural resources, particularly the County's mineral assets, to support the development of the economy but managing them in a sustainable way, so that all Staffordshire has to offer can continue to be enjoyed by generations to come; Encouraging more sustainable construction, securing high

Joint Waste Local Plan Policy	Newcastle-under-Lyme and Stoke-on-Trent Core Spatial Strategy	'Our City, Our Future' Community Strategy for Stoke-on-Trent	A Sustainable Community Strategy for Staffordshire 2008 - 2023 'Our County, Our Vision'
	<p>Strategic Aim 9 (SA9) - To safeguard valued economic resources including minerals in the City of Stoke-on-Trent</p> <p>Strategic Aim 10 (SA10) - To facilitate development within identified priority regeneration areas of the North Staffordshire conurbation</p> <p>Strategic Aim 17 (SA17) - To minimise the adverse impacts of climate change in the move towards zero carbon growth through energy efficiency, promoting the use of renewable energy sources and green construction methods in accordance with best practice</p>	<p>improvement within City businesses</p>	<p>levels of resource and energy efficiency and a reduction in carbon emissions, contributing to sustainable transport, enhancing biodiversity and helping to tackle climate change;</p> <ul style="list-style-type: none"> ● Responding to the threat of climate change and environmental deterioration, reducing our carbon emissions and making a commitment to live more sustainable lives; ● Managing waste in ways which reduce environmental impact and support the economy and local communities and producing

Adoption version Staffordshire and Stoke-on-Trent Joint Waste Local Plan 2010 - 2026 Appendices

Joint Waste Local Plan Policy	Newcastle-under-Lyme and Stoke-on-Trent Core Spatial Strategy	'Our City, Our Future' Community Strategy for Stoke-on-Trent	A Sustainable Community Strategy for Staffordshire 2008 - 2023 'Our County, Our Vision'
			<p>less waste, ensuring waste is being re-used, recycled, composted and used to produce energy.</p> <p>Priority 'A vibrant, prosperous and sustainable economy':</p> <ul style="list-style-type: none"> Embracing and investing in new environmental technologies, such as the Renewables Sector, and developing our County's renewable energy sector
<p>Policy 2 - Targets and broad locations for waste management facilities</p>	<p>Strategic Aim 3 (SA3) - To reduce the need to travel, improve accessibility and increase the opportunities for development of sustainable and innovative modes of travel to support the regeneration of the</p>	<p>4.2m Secure quality redevelopment of prominent sites within a unified design framework</p>	<p>Priority 'A vibrant, prosperous and sustainable economy':</p> <ul style="list-style-type: none"> Attracting sustainable. Quality public and private

Joint Waste Local Plan Policy	Newcastle-under-Lyme and Stoke-on-Trent Core Spatial Strategy	‘Our City, Our Future’ Community Strategy for Stoke-on-Trent	A Sustainable Community Strategy for Staffordshire 2008 - 2023 ‘Our County, Our Vision’
	<p>plan area by securing improvements to public transport infrastructure; and the progressive provision of park and ride and facilities to promote walking and cycling</p> <p>Strategic Aim 5 (SA5) - To foster and diversify the employment base of all parts of the plan area, both urban and rural, including development of new types of work and working lifestyles, and supporting the office development sector, new technologies and business capitalising on the inherent advantages of North Staffordshire</p> <p>Strategic Aim 10 (SA10) - To facilitate development within identified priority regeneration areas of the North Staffordshire conurbation</p> <p>Strategic Aim 13 (SA13) - To protect and improve the plan area’s network of canals and watercourses, green spaces/infrastructure and parks to provide the landscape setting for high quality development of</p>	<p>4.4c Bring forward the development of Strategic Sites</p> <p>4.4f Secure high quality new uses for derelict sites and underused buildings, particularly along the A500 corridor.</p> <p>5.5h Improve recycling opportunities throughout the city</p>	<p>investment into the County that supports our towns and villages</p> <p>Priority ‘A protected, enhanced and respected environment’:</p> <ul style="list-style-type: none"> • Managing waste in ways which reduce environmental impact and support the economy and local communities and producing less waste, ensuring waste is being re-used, recycled, composted and used to produce energy;

Joint Waste Local Plan Policy	Newcastle-under-Lyme and Stoke-on-Trent Core Spatial Strategy	'Our City, Our Future' Community Strategy for Stoke-on-Trent	A Sustainable Community Strategy for Staffordshire 2008 - 2023 'Our County, Our Vision'
	<p>homes, employment and leisure opportunities; opportunities for physical activity and to foster a more sustainable way of life</p> <p>Strategic Aim 14 (SA14) - To protect and enhance the historic heritage and the unique character of the plan area by ensuring new developments are appropriate in terms of scale, location and their context.</p> <p>Strategic Aim 17 (SA17) - To minimise the adverse impacts of climate change in the move towards zero carbon growth through energy efficiency, promoting the use of renewable energy sources and green construction methods in accordance with best practice</p>		
<p>Policy 3 - Criteria for the location of new and enhanced waste management facilities</p>	<p>Strategic Aim 3 (SA3) - To reduce the need to travel, improve accessibility and increase the opportunities for development of sustainable and innovative modes of travel to support</p>	<p>4.2m Secure quality redevelopment of prominent sites within a unified design framework</p>	<p>Priority 'A vibrant, prosperous and sustainable economy':</p> <ul style="list-style-type: none"> • Attracting sustainable. Quality public and private

Joint Waste Local Plan Policy	Newcastle-under-Lyme and Stoke-on-Trent Core Spatial Strategy	‘Our City, Our Future’ Community Strategy for Stoke-on-Trent	A Sustainable Community Strategy for Staffordshire 2008 - 2023 'Our County, Our Vision'
	<p>the regeneration of the plan area by securing improvements to public transport infrastructure; and the progressive provision of park and ride and facilities to promote walking and cycling</p> <p>Strategic Aim 5 (SA5) - To foster and diversify the employment base of all parts of the plan area, both urban and rural, including development of new types of work and working lifestyles, and supporting the office development sector, new technologies and business capitalising on the inherent advantages of North Staffordshire</p> <p>Strategic Aim 10 (SA10) - To facilitate development within identified priority regeneration areas of the North Staffordshire conurbation</p> <p>Strategic Aim 13 (SA13) - To protect and improve the plan area’s network of canals and watercourses, green spaces/infrastructure and parks to provide the landscape setting for high</p>	<p>4.4c Bring forward the development of Strategic Sites</p> <p>4.4f Secure high quality new uses for derelict sites and underused buildings, particularly along the A500 corridor.</p> <p>5.5h Improve recycling opportunities throughout the city</p>	<p>investment into the County that supports our towns and villages</p> <p>Priority 'A protected, enhanced and respected environment':</p> <ul style="list-style-type: none"> • Managing waste in ways which reduce environmental impact and support the economy and local communities and producing less waste, ensuring waste is being re-used, recycled, composted and used to produce energy

Joint Waste Local Plan Policy	Newcastle-under-Lyme and Stoke-on-Trent Core Spatial Strategy	'Our City, Our Future' Community Strategy for Stoke-on-Trent	A Sustainable Community Strategy for Staffordshire 2008 - 2023 'Our County, Our Vision'
	<p>quality development of homes, employment and leisure opportunities; opportunities for physical activity and to foster a more sustainable way of life</p> <p>Strategic Aim 14 (SA14) - To protect and enhance the historic heritage and the unique character of the plan area by ensuring new developments are appropriate in terms of scale, location and their context.</p> <p>Strategic Aim 17 (SA17) - To minimise the adverse impacts of climate change in the move towards zero carbon growth through energy efficiency, promoting the use of renewable energy sources and green construction methods in accordance with best practice</p>		
<p>Policy 4 - Sustainable design and protection and improvement of</p>	<p>Strategic Aim 3 (SA3) - To reduce the need to travel, improve accessibility and increase the opportunities for development of sustainable and innovative</p>	<p>4.2a Change by design - to provide better designed buildings and spaces</p>	<p>Priority 'A protected, enhanced and respected environment':</p> <ul style="list-style-type: none"> Using our natural

Joint Waste Local Plan Policy	Newcastle-under-Lyme and Stoke-on-Trent Core Spatial Strategy	'Our City, Our Future' Community Strategy for Stoke-on-Trent	A Sustainable Community Strategy for Staffordshire 2008 - 2023 'Our County, Our Vision'
<p>environmental quality</p>	<p>modes of travel to support the regeneration of the plan area by securing improvements to public transport infrastructure; and the progressive provision of park and ride and facilities to promote walking and cycling</p> <p>Strategic Aim 14 (SA14) - To protect and enhance the historic heritage and the unique character of the plan area by ensuring new developments are appropriate in terms of scale, location and their context.</p> <p>Strategic Aim 16 (SA16) - To eliminate poor quality development and establish a culture of excellence in built design by developing design skills and understanding, by requiring good, safe design as a universal baseline and distinctive design excellence in all development proposals, and by promoting procurement methods which facilitate the delivery of good design.</p>	<p>4.2m Secure quality redevelopment of prominent sites within a unified design framework</p> <p>5.4d Encourage City Businesses to implement environmental improvements</p> <p>5.7d Work with local business organisations to encourage environmental improvement within City businesses</p>	<p>resources, particularly the County's mineral assets, to support the development of the economy but managing them in a sustainable way, so that all Staffordshire has to offer can continue to be enjoyed by generations to come;</p> <ul style="list-style-type: none"> ● Creating and maintaining green spaces within our communities; ● Encouraging more sustainable construction, securing high levels of resource and energy efficiency and a reduction in carbon emissions, contributing to sustainable

Joint Waste Local Plan Policy	Newcastle-under-Lyme and Stoke-on-Trent Core Spatial Strategy	'Our City, Our Future' Community Strategy for Stoke-on-Trent	A Sustainable Community Strategy for Staffordshire 2008 - 2023 'Our County, Our Vision'
	<p>Strategic Aim 17 (SA17) - To minimise the adverse impacts of climate change in the move towards zero carbon growth through energy efficiency, promoting the use of renewable energy sources and green construction methods in accordance with best practice</p>		<p>transport, enhancing biodiversity and helping to tackle climate change;</p> <ul style="list-style-type: none"> • Responding to the threat of climate change and environmental deterioration, reducing our carbon emissions and making a commitment to live more sustainable lives; • Managing waste in ways which reduce environmental impact and support the economy and local communities and producing less waste, ensuring waste is being re-used, recycled, composted and used to produce energy.

Joint Waste Local Plan Policy	Newcastle-under-Lyme and Stoke-on-Trent Core Spatial Strategy	'Our City, Our Future' Community Strategy for Stoke-on-Trent	A Sustainable Community Strategy for Staffordshire 2008 - 2023 'Our County, Our Vision'
			<p>Priority 'Improved health and sense of well-being':</p> <ul style="list-style-type: none"> ● Reducing health inequalities and promoting healthier living <p>Priority 'Strong, safe and cohesive communities':</p> <ul style="list-style-type: none"> ● Creating a strong, effective and influential third sector in Staffordshire, which is fully engaged in planning and delivering services.

Adoption version Staffordshire and Stoke-on-Trent Joint Waste Local Plan 2010 - 2026 Appendices

Appendix 3: Replacement of Waste Local Plan policies

The following parts of the Joint Waste Local Plan, complimented by relevant national planning policy, will replace specified 'saved' policies, together with supporting paragraphs, in the adopted original Waste Local Plan when the Joint Waste Local Plan is adopted (Regulation 8(5), The Town and County Planning (Local Planning) (England) Regulations 2012).

Table 7: Staffordshire and Stoke-on-Trent Waste Local Plan (Adopted February 2003)

'Saved' Local Plan Policy	Replacement part of the Joint Waste Core Strategy
WLP 3 General Protection	Policy 4 Sustainable design and protection and improvement of environmental quality
WLP 4 Restoration, Aftercare and After-use	Partly in Policy 1.6, Policy 3, and Policy 4
WLP 5 Legal Agreements	No replacement policy - see Section 6 of document Implementation.
WLP 10 Waste Disposal on Agricultural, Forestry or other Land	Policy 1 Waste as a resource
WLP 12 Criteria for the location of Waste Treatment Facilities	Policy 2 Targets and broad locations for waste management facilities; and, Policy 3 General requirements for new and enhanced waste management facilities
WLP 13 Time limits for Waste Treatment Facilities on Landfill and Mineral Sites	Policy 3 General requirements for new and enhanced waste management facilities
WLP 14 Waste Treatment Facilities within buildings and in the open air	Policy 3 General requirements for new and enhanced waste management facilities
WLP 15 Temporary consent for open air waste treatment facilities	Policy 3 General requirements for new and enhanced waste management facilities
WLP 16 Incineration	Policy 1 Waste as a resource

The following parts of the Joint Waste Local Plan, in respect of protection and improvement of environmental quality will partially replace the following 'saved' policies, together with supporting paragraphs, in the adopted Structure Plan when the Joint Waste Local Plan, is adopted (Regulation 8(5), The Town and County Planning (Local Planning) (England) Regulations 2012).

Table 8: Staffordshire and Stoke-on-Trent Structure Plan (adopted May 2001)

'Saved' Structure Plan Policy	Replacement part of the Joint Waste Core Strategy
MW5 Sustainable Waste Management	<p>Policy 1 Waste as a resource;</p> <p>Policy 2 Targets and broad locations for waste management facilities; and,</p> <p>Policy 3 General requirements for new and enhanced waste management facilities</p>
MW6 Evaluation of Proposals	Policy 4 Sustainable design and protection and improvement of environmental quality
MW7 Relationship to Conservation and/or Development Initiatives	Policy 4 Sustainable design and protection and improvement of environmental quality
MW8 Transportation of Mineral and Waste	<p>Policy 3 General requirements for new and enhanced waste management facilities; and,</p> <p>Policy 4 Sustainable design and protection and improvement of environmental quality</p>
MW9 Reclamation	<p>Policy 3 General requirements for new and enhanced waste management facilities; and,</p> <p>Policy 4 Sustainable design and protection and improvement of environmental quality</p>
D1 Sustainable Forms of Development	<p>Policy 1 Waste as a resource; and,</p> <p>Policy 2 Targets and broad locations for waste management facilities</p>
D2 The Design and Environmental Quality of Development	<p>Policy 3 General requirements for new and enhanced waste management facilities; and,</p> <p>Policy 4 Sustainable design and protection and improvement of environmental quality</p>
D4 Managing Change in Rural Areas	Policy 3 General requirements for new and enhanced waste management facilities; and,

Adoption version Staffordshire and Stoke-on-Trent Joint Waste Local Plan 2010 - 2026 Appendices

'Saved' Structure Plan Policy	Replacement part of the Joint Waste Core Strategy
	Policy 4 Sustainable design and protection and improvement of environmental quality
D5B Development in the Green Belt	Policy 4 Sustainable design and protection and improvement of environmental quality
D6 Conserving Agricultural Land	Policy 4 Sustainable design and protection and improvement of environmental quality
D7 Conserving Energy and Water	Policy 4 Sustainable design and protection and improvement of environmental quality
NC1 Protection of the Countryside: General Considerations	Policy 4 Sustainable design and protection and improvement of environmental quality
NC2 Landscape Protection and Restoration	Policy 4 Sustainable design and protection and improvement of environmental quality
NC3 Cannock Chase Area of Outstanding Natural Beauty	Policy 4 Sustainable design and protection and improvement of environmental quality
NC4 Protecting the Peak District National Park	Policy 4 Sustainable design and protection and improvement of environmental quality
NC6 Important Semi-Natural Habitats	Policy 4 Sustainable design and protection and improvement of environmental quality
NC7A Sites of International Nature Conservation Importance	Policy 4 Sustainable design and protection and improvement of environmental quality
NC7B Sites of National Nature Conservation Importance	Policy 4 Sustainable design and protection and improvement of environmental quality
NC7C Sites of Local Nature Conservation Importance	Policy 4 Sustainable design and protection and improvement of environmental quality
NC9 Water Resources	Policy 4 Sustainable design and protection and improvement of environmental quality
NC12 National and Community Forests	Policy 4 Sustainable design and protection and improvement of environmental quality
NC13 Protection of Trees, Hedgerows and Woodlands	Policy 4 Sustainable design and protection and improvement of environmental quality

'Saved' Structure Plan Policy	Replacement part of the Joint Waste Core Strategy
NC14 Sites of Archaeological Importance	Policy 4 Sustainable design and protection and improvement of environmental quality
NC15 Sites of National Archaeological Importance	Policy 4 Sustainable design and protection and improvement of environmental quality
NC16 Registered Historic Battlefields	Policy 4 Sustainable design and protection and improvement of environmental quality
NC17A Historic Parks and Gardens: Protection	Policy 4 Sustainable design and protection and improvement of environmental quality
NC17B Historic Parks and Gardens: Management and Restoration	Policy 4 Sustainable design and protection and improvement of environmental quality
NC18 Listed Buildings	Policy 4 Sustainable design and protection and improvement of environmental quality
NC19 Conservation Areas	Policy 4 Sustainable design and protection and improvement of environmental quality

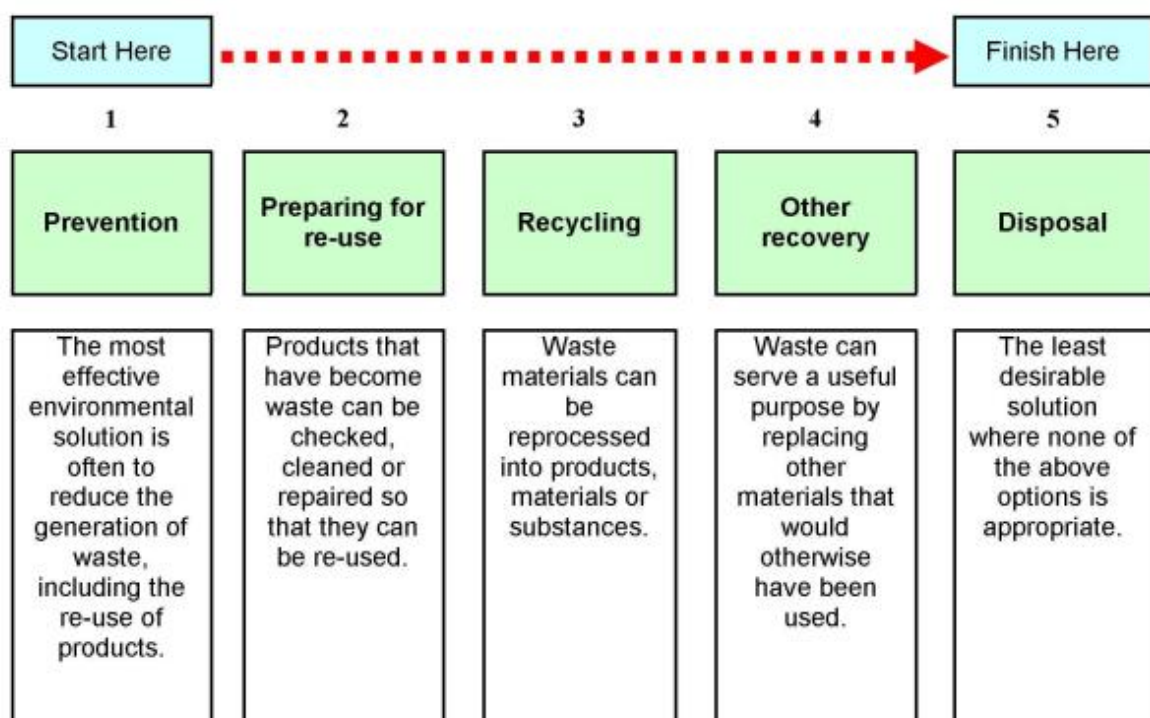
The Supplementary Planning Guidance 'A Code of Practice for Waste Developers' accompanying the adopted Waste Local Plan, will remain a material consideration pending its replacement by more up to date detailed planning policy or supplementary planning documents.

The Supplementary Planning Guidance 'Planning for Landscape Change' and the 'Planning for Heavy Commercial Vehicles associated with mineral or waste developments' accompanying the adopted Staffordshire and Stoke-on-Trent Structure Plan, or successor documents, will remain a material consideration.

Appendix 4: The Waste Hierarchy

Landfilling waste and transporting waste over long distances is a significant contributor to climate change. The European Union Waste Framework Directive advocates the "Waste Hierarchy" as a method of sustainable waste management and National guidance (Planning Policy Statement 10: Planning for Sustainable Waste Management) and the National Waste Strategy set out any waste generated needs to be managed in accordance with the "Waste Hierarchy". The overall objective of Government policy on waste is to protect human health and the environment by producing less waste and by using it as a resource wherever possible. By more sustainable waste management, moving the management of waste up the "Waste Hierarchy", the Government aims to break the link between economic growth and the environmental impact of waste.

The "Waste Hierarchy" is intended to guide choices about waste management options by ranking them in terms of their potential for causing harm to human health and the environment. The most effective environmental solution (prevention) is at the start of the hierarchy and the least desirable solution (disposal) is at the end.



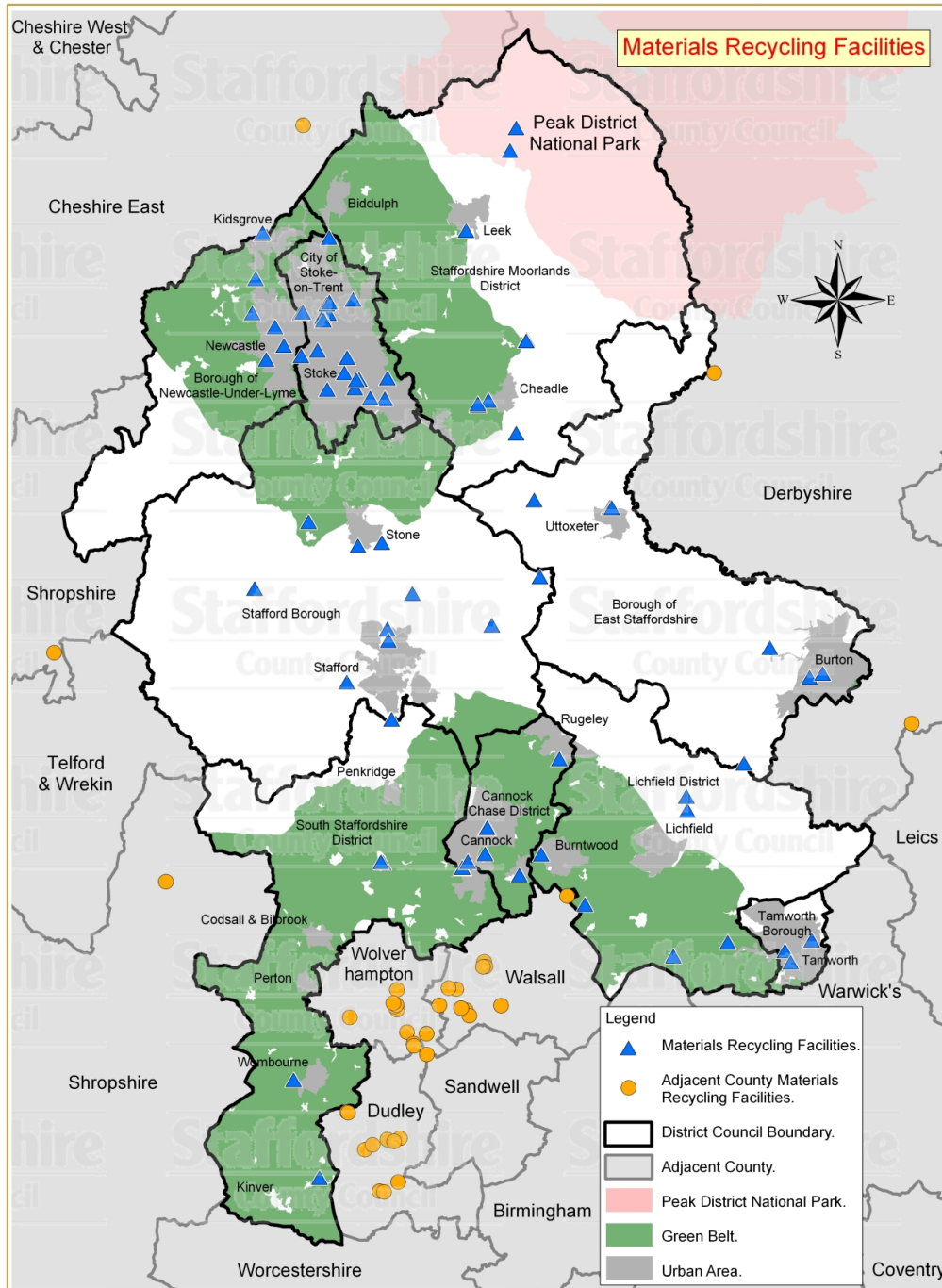
The revised European Union Waste Framework Directive (2008/98/EC) introduces a new approach to waste management which focuses more strongly on the prevention of waste. It states that "waste prevention should be the first priority of waste management, and that re-use and material recycling should be preferred to energy recovery from waste, where and insofar as they are the best ecological options" (Para 7). The revised Directive seeks to increase the use of waste as a resource (e.g. for fuel) and to place greater emphasis on the prevention and recycling of waste, while protecting human health and the environment (CLG letter to Chief Planning

Officers, 31 March 2011). It includes a new waste hierarchy which differs from the existing hierarchy in how it defines re-use of materials and in how it distinguishes between recycling and other recovery. The full definition of each level of the waste hierarchy is set out in Article 3 of the Directive. Paragraph 1 and Annex C of PPS10 has been updated by way of a letter from the Chief Planning Officer dated 31 March 2011 to ensure that it incorporates the new waste hierarchy set out in the revised European Union Waste Framework Directive (2008/98/EC). The full definition of each level of the waste hierarchy is set out in Article 3 of the revised Waste Framework Directive.

Appendix 5: Staffordshire and Stoke-on-Trent Waste Infrastructure at May 2012

Policy 2.5 requires local planning authorities, when determining proposals for non-waste related developments, to take into consideration existing waste management facilities. Information on waste infrastructure at 1 May 2012 is provided in the following figures and tables. To assist local planning authorities, Ordnance Survey based boundary information for all waste management facilities has been provided by the Waste Planning Authorities in an electronic format (Geographic Information Systems (GIS) shapefile for each site) for them to incorporate in their own GIS constraints mapping projects so when validating applications they are aware of waste sites and can decide on whether or not to consult the Waste Planning Authority on a specific proposal that may affect a waste management facility. Information on minerals and waste sites within the plan area are also available on the publicly accessible LocalView Planning Mapping Portal <http://localview.staffordshire.gov.uk/lvplanning/>. This GIS boundary information (GIS layers) for waste management facilities will be updated on the LocalView Planning Mapping Portal and updated electronic information will also be supplied to the local planning authorities on an annual basis when producing the Annual Monitoring Report (AMR). On request the Councils can provide paper copies of the Ordnance Survey based plans for boundaries of waste sites within a specific area if an applicant / member of the public requests this information in relation to a proposed development / application site. Requests may be subject to a charge.

Figure 5: Material Recycling Facilities in Staffordshire and Stoke-on-Trent



(C) Crown Copyright and database rights 2011. Ordnance Survey 100019422. Produced by Staffordshire County Council, 2011. You are not permitted to copy, sub-license, distribute or sell any of this data to third parties in any form.

Table 9: Materials Recycling Facilities in Staffordshire and Stoke-on-Trent

Site Name	Address	District	Status	Operator	Min		Northing
					Waste	Eastings	
GD Goldings Skip Hire	Nicolson Way, Burton-on-Trent	Burton-on-Trent	Operational	G Golding	207	423400	322400
Poplars Landfill	Leacroft Lane, Lichfield Road	Cannock Chase	Operational	Biffa Waste Services Ltd	173	399474	309340
Unit 15 & 15A Cannock Industrial Centre	Unit 15 & 15A Cannock Industrial Centre, Walkmill Lane, Bridgtown, Cannock	Cannock Chase	Operational	Augean PLC	214	397858	308277
ESTROBEST, Cannock	Cannock Industrial Centre, Alkmill Lane, Bridgtown, Cannock	Cannock Chase	Operational	ESTROBEST	464	397796	308331
Unit 13 Chasetown Industrial Centre, Hednesford	Chaseside Industrial Estate, Off East Cannock Road, Hednesford	Cannock Chase	Operational	Cannock Auto Salvage Ltd	465	399667	311221
Direct Vehicle Services	Unit 3 & Unit 13 & Yard, Chaseside Drive, Hednesford, Cannock, Staffs	Cannock Chase	Operational	Darren Jon Owen	809	399554	311199
Just Affords	The Old Dairies, 1 & 2, Redbrook Lane Ind Est, Redbrook Lane, Rugeley,	Cannock Chase	Operational	Just Affords	626	404918	316311
Land at 70-76 North Street, Bridgtown (John Craddo	70 - 76, North Street, Bridgtown, Cannock, Staffs	Cannock Chase	Operational	John Craddock Ltd	651	398199	308757
21A Conduit Road, Norton Canes - Midland V W Ltd	21a, Conduit Road, Norton Canes, Cannock, Staffs	Cannock Chase	Operational	Midland VW	653	401990	307769
Cannock Auto Salvage	Chasetown Ind Est, Unit 10, Off East Cannock Road, Hednesford, Cannock	Cannock Chase	Operational	Peter Rogers & Neil Webb	715	399624	311261

Adoption version Staffordshire and Stoke-on-Trent Joint Waste Local Plan 2010 - 2026 Appendices

Site Name	Address	District	Status	Operator	Min Waste	Easting	Northing
Land adjoining Ashbourne Road	Uttoxeter	East Staffordshire	Operational	Messrs. M.C. and F.T. Bloor	239	408630	334815
Yards A & B, Ashbourne Road, Uttoxeter	The bungalow, Ashbourne Road, Uttoxeter	East Staffordshire	Operational	Mr. G.R. Barlow	460	408729	334831
The Timber Yard	The Timber Yard, Withington, Leigh	East Staffordshire	Operational	The Timber Yard	660	403069	335362
Land at Nicholson Way	Jackson Yard, Nicholson Way, Burton-on-Trent	East Staffordshire	Operational	Tim Bates Plant Hire Ltd	743	423318	322321
Hi Range	Wychor Bridges, Lichfield Road, Wychor, Burton on Trent, Staffordshir	East Staffordshire	Operational	Hi Range Ltd	812	418482	316005
Paget Street, Burton (SIMS Metals)	Paget Street, Burton Upon Trent, Staffs	East Staffordshire	Operational	Sims McIntrye Metals Ltd.	232	424277	322608
Chapel Lane (S S Auto Salvage)	Chapel Lane, Anslow, Burton On Trent, Staffs	East Staffordshire	Operational	S.S. Auto Salvage & Repairs	658	420390	324487
Mark Taylor Scrap And Metal	Riverside Yard, Ashbourne Road, Uttoxeter, Staffs	East Staffordshire	Operational	Riverside Yard	800	408786	334786
Land at Barracks Lane - WW Commercial	Barrack Lane, Brownhills, Walsall, West Midlands	Lichfield	Operational	WW Commercials	625	406810	305609
Beacon Metals	Wood End Lane, Fradley Park, Lichfield, Staffs	Lichfield	Operational	Beacon Metals Ltd	649	414327	312534
Moneymore (Hanson)	Coltman Precast Concrete Limited, London Road, Canwell	Lichfield	Operational	Coltman Precast Concrete Limited	190	413302	301816
Unit 5a Plant Lane Business Park, Burntwood	Unit 5a Plant Lane Business Park, Burntwood	Lichfield	Pre-operational	Enviroarm Limited	2042	403586	309307
Hanger No. 1, Gorse Lane, Fradley Park, Lichfield	Hanger No. 1, Gorse Lane, Fradley Park, Lichfield	Lichfield	Pre-operational	What-a-Waste Ltd	806	414262	313566

Adoption version Staffordshire and Stoke-on-Trent Joint Waste Local Plan 2010 - 2026 Appendices

Site Name	Address	District	Status	Operator	Min		Northing
					West	Easting	
Allens Spares and Salvage, Church Lawton	Limekiln Lane, Kidsgrove	Newcastle-under-Lyme	Operational	Allens Spares & Salvage	250	383063	354917
Field House, Keele Road	Keele Road, Newcastle	Newcastle-under-Lyme	Operational	Hamptons (J.M. & N.W. Hampton)	258	383385	345688
Wedgwood Works, Jamage Road	Jamage Road, Talke Pits	Newcastle-under-Lyme	Operational	Mr. G.M. Booth	446	382604	351627
Spencroft Road	Spencroft Road, Chesterton	Newcastle-Under-Lyme	Operational	Sally's Car Breakers	677	384023	348092
Land adjacent to Rowhurst Close Industrial Estate	Adjacent To Rowhurst Close Ind Est, Apedale Road, Chesterton, Newcastle	Newcastle-Under-Lyme	Operational	Jeffrey Armstrong	516	382364	349109
Lawton Breakers	Unit 2, Limekiln Lane, Church Lawton, Stoke On Trent, Staffordshire	Newcastle-Under-Lyme	Operational	Lawton's Breakers	598	383143	355015
The Garage, Albany Road (Newcastle Autocentre Ltd)	The Garage, Albany Road, Cross Heath, Newcastle Under Lyme, Staffs	Newcastle-Under-Lyme	Operational	Newcastle Autocentre Ltd (The Garage)	654	384688	346726
Tidysite Ltd	Turner Crescent, Newcastle, Staffordshire	Newcastle-under-Lyme	Operational	A S Butters	1185	383379	348587
Watermills Road	Chesterton, Staffordshire	Newcastle-under-Lyme	Pre-Operational	R Khan	1187	382449	349378
The Motoryard, Prestwood Drive, Stourton	The Motoryard, Prestwood Drive, Stourton, Stourbridge	South Staffordshire	Operational	Saunders Brothers	462	387299	285518
Four Ashes MRF, Four Ashes	1 Station Road, Four Ashes	South Staffordshire	Operational	Veolia ES Birmingham	488	391983	308680
Unit 4B Four Ashes Industrial Estate - T S Russell	Unit 4b Four Ashes Ind Est, Station Road, Four Ashes, Wolverhampton, S	South Staffordshire	Operational	T.S. Russell	648	391813	308748
Bridgnorth Road, Smestow Bridge (Hewitt Internatio	Hewitt International Salvage, Bridgnorth Road, Smestow Bridge, Wombour	South Staffordshire	Operational	Hewitts International Salvage Management	655	385390	292724
Heritage House, Acton Gate, Stafford	Heritage House, Acton Gate, Stafford	South Staffordshire	Operational	Stone Computers Ltd	808	392604	319225

Adoption version Staffordshire and Stoke-on-Trent Joint Waste Local Plan 2010 - 2026 Appendices

Site Name	Address	District	Status	Operator	Min Waste	Eastings	Northings
Unit M & part K Boons, Billington Lane, Stafford	Billington Lane, Derrington, Stafford	Stafford	Operational	Mr. P.L. Tatton	454	389317	321963
Leese Bros. Ltd. (Eccleshall)	Platt Bridge, Eccleshall	Stafford	Operational	Leese Bros. (Eccleshall) Ltd	455	382526	328848
J. Watson & Sons, Common Road, Stafford	Common Road, Stafford	Stafford	Operational	J. Watson & Sons	456	392277	325860
Highlows Farm	Highlows Farm, Highlows Lane, Yarnfield, Stone	Stafford	Pre-operational	Superseed Energy Ltd	640	386496	333765
Unit 1 Opal Way	Stone Business Park, Stone	Stafford	Pre-operational	Stone Computers Ltd	742	390130	331996
Hixon Airfield Industrial Estate (Jonathan Lloyd C	Airfield Ind Est, New Road, Hixon, Stafford, Staffs	Stafford	Operational	Jonathan Lloyd Commercial Salvage	627	399956	326144
Drummond Road (J & S Metals)	Astonfields Ind Est, Drummond Road, Stafford, Staffs	Stafford	Operational	J & S Metals	652	392379	325027
F. Watson & Sons	Rose Cottage, Lichfield Road, Little Stoke, Stone, Staffs	Stafford	Operational	F. Watson & Sons	457	391879	332235
Mr K A Jenkinson	Downside, Sandon Road, Sandon Bank, Stafford, Staffs	Stafford	Operational	Mr. K.A. Jenkinson	458	394130	328479
Grindley House Farm	Grindley House Farm, Grindley, Stafford	Stafford	Non-operational	Holford Contracts (Staffs) Ltd	331	403496	329701
Old Coal Yard	Barnfields Industrial Estate	Staffordshire Moorlands	Operational	Mr. A. J. Cantrell	289	398079	355171
Unit K Brookhouse Industrial Estate	Brookhouse Industrial Estate, Cheadle	Staffordshire Moorlands	Operational	Mr. R. P. Howell	292	399721	342684
Blue Hills	Blue Hills, Upper Hulme, Leek	Staffordshire Moorlands	Operational	Stuart Johnson Commercials	683	401747	362753

Adoption version Staffordshire and Stoke-on-Trent Joint Waste Local Plan 2010 - 2026 Appendices

Site Name	Address	District	Status	Operator	Min West	Easting	Northing
Coregreen Yard	Coregreen Yard, Gorsty Hill Road, Tean	Staffordshire Moorlands	Operational	Robert Coates	682	401756	340263
Auto Line Motor Salvage	The Colour Mill, Froghall, Stoke On Trent, Staffs	Staffordshire Moorlands	Operational	Auto Line Motor Salvage	442	402516	347173
Hillside Industrial Park - The Metal Exchange	Unit 15 New Haden Works, Draycott Cross Roads, Cheadle	Staffordshire Moorlands	Pre-operational	The Metal Exchange	741	398940	342324
Auto Line Motor Salvage	The Hawthorns, Off A524, Froghall, Stoke On Trent, Staffs	Staffordshire Moorlands	Operational	Auto Line Motor Salvage	442	402488	347055
K J Baines Commercial	Upperhulme Mill, Buxton Road, Upper Hulme, Leek, Staffordshire	Staffordshire Moorlands	Operational	K.J. Baines Commercial	443	401296	361058
T M E Recycling Ltd	Hillside Industrial Park, Draycott Cross Road, Cheadle	Staffordshire Moorlands	Operational	T M E Recycling Ltd	1114	398953	342313
Land at Hillside Industrial Estate, Draycott Cross Roads, Cheadle	Land at Hillside Industrial Estate, Draycott Cross Roads, Cheadle	Staffordshire Moorlands	Pre-operational	R.P. Howell	1173	398937	342438
McGuiness, Stoke	Fowlea Brook, Longport	Stoke-on-Trent	Operational	F. McGuiness & Sons Ltd	295	385917	349095
Shraff Tip	Longton Hall Road, Longton	Stoke-on-Trent	Operational	Shraff Management Ltd	69	389892	343593
Arthur Wrights, Longton	Parkhall Road, Weston Coyney / Longton, Stoke-on-Trent	Stoke-on-Trent	Operational	Arthur Wright & Son	447	392294	344322
Messrs. G.W. & J. Carter, Cobridge	Purbeck Street, off Leek New Road, Cobridge	Stoke-on-Trent	Operational	Messrs. G.W. & J. Carter	448	387964	349071
Fenton Motor Depot	313 City Road, Fenton	Stoke-on-Trent	Operational	Fenton Motor Depot	449	389128	344720
Moores Metals	530 Hartshill Road, Hartshill, Stoke-on-Trent	Stoke-on-Trent	Operational	Moores Metals	450	385953	345958

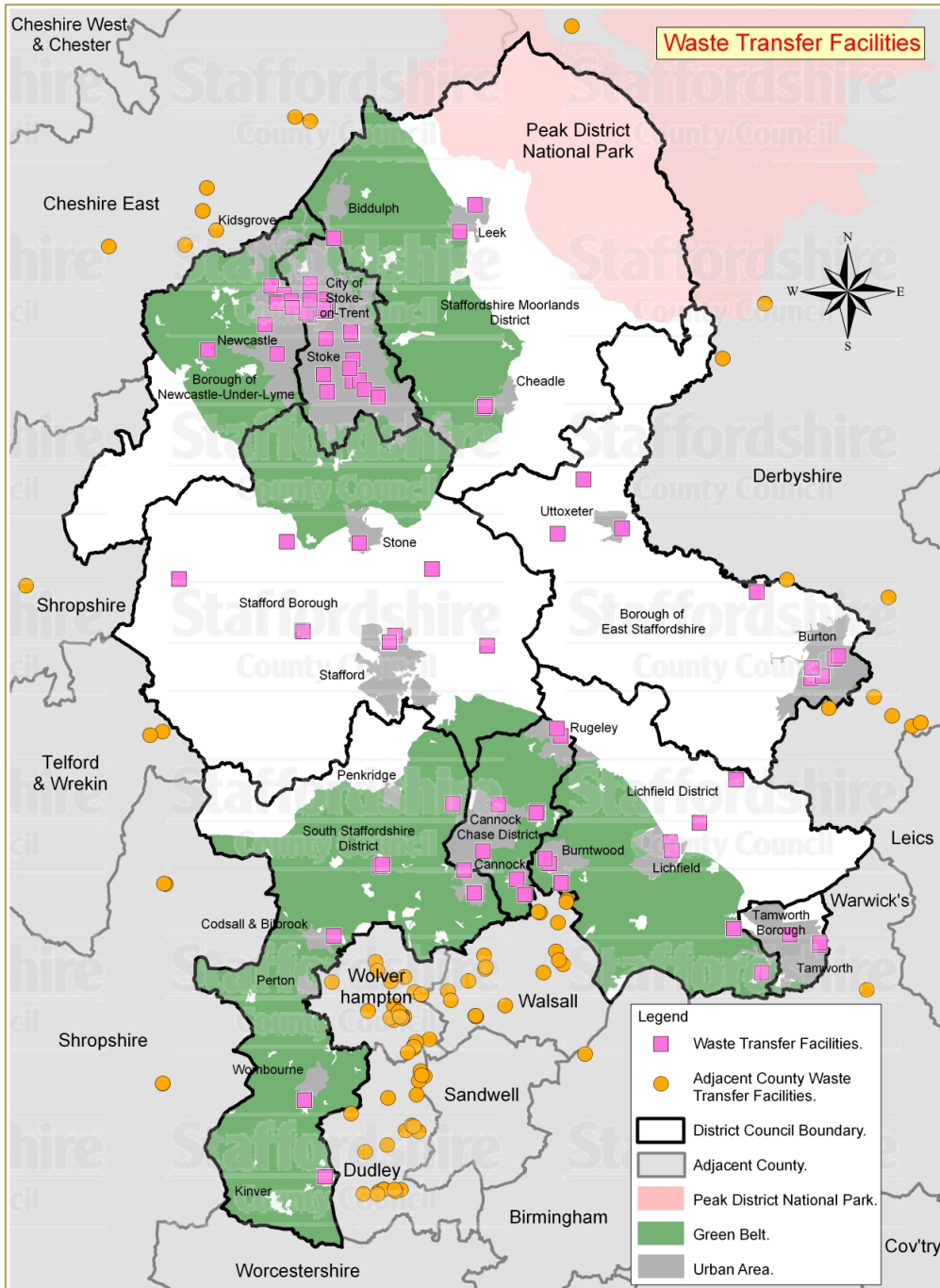
Adoption version Staffordshire and Stoke-on-Trent Joint Waste Local Plan 2010 - 2026 Appendices

Site Name	Address	District	Status	Operator	Min Waste	Eastings	Northing
Land at Out-clough Road	Brindley Ford	Stoke-on-Trent	Operational	Mr. P. Nixon	452	388010	354656
White Horse, Elder Road, Cobridge	White Horse, Elder Road, Cobridge, Stoke-on-Trent	Stoke-on-Trent	Operational	Mr. F. Wilshaw	482	387535	348854
Cockshutt Sidings (CMR Ltd)	Shelton New Road, Cliffe Vale	Stoke-on-Trent	Operational	Construction Material Recycling Ltd. (CMR Ltd)	501	387167	346367
Elswick Road	Elswick Road, Fenton	Stoke-on-Trent	Operational	J.D. Commercials Ltd	684	389322	345831
25-27 Pitsford Street	25-27 Pitsford Street, Normacot	Stoke-on-Trent	Operational	VW Spares	680	392099	342813
301 Waterloo Road	301 Waterloo Road, Cobridge	Stoke-on-Trent	Operational	Auto Continental Ltd	676	387590	348588
54 Trentham Road	54 Trentham Road, Longton	Stoke-on-Trent	Operational	Motor Clinic	686	391031	342871
Royal Street	Royal Street, Fenton	Stoke-on-Trent	Operational	King Street Breakers	681	390226	344235
Sneyd Hill Breakers	Sneyd Hill, Nevada Lane, Burslem	Stoke-on-Trent	Operational	S N Autobreakers	678	387819	349760
Units 8 & 9 Milvale Street	Units 8 & 9 Milvale Street, Middleport	Stoke-on-Trent	Operational	Ace Vauxhall Parts	685	386084	349180
Land at Sneyd Hill	Land at Sneyd Hill, Sneyd Hill, Stoke-on-Trent	Stoke-on-Trent	Pre-operational	Mr Brown	796	388029	349894
Waste Management Site	Unit 4, Montrose Street, Fenton, Stoke On Trent, Staffs	Stoke-on-Trent	Operational	Ad Autos Ltd	813	389994	344211
Campbell Road Materials Recycling Facility	Land/premises at Campbell Road, Stoke-On-Trent, Staffs	Stoke-on-Trent	Operational	Michelin Tyre Plc	1182	387863	343476
Mormet (Alloys) Ltd, Tamworth	Tamworth Road, Two Gates, Tamworth	Tamworth	Operational	Mormet (Alloys) Ltd	467	421500	302194
Bangley Farm	Bangley Farm, Hints Road, Mile Oak, Tamworth	Tamworth	Operational	Hillwood Auto Engineering Ltd	671	417301	302824

Adoption version Staffordshire and Stoke-on-Trent Joint Waste Local Plan 2010 - 2026 Appendices

Site Name	Address	District	Status	Operator	Min Waste	Easting	Northing
Unit 15b Amington Industrial Estate (Briers)	Unit 15b Felspar Road, Amington Industrial Estate	Tamworth	Operational	W. M. Briers & Son (Tamworth) Ltd.	611	423467	302995
Mainly Ford (MF Parts)	Two Gates Ind Est, Unit 23, Watling Street, Two Gates, Tamworth, Staff	Tamworth	Operational	Mainly Ford	468	421919	301355
23 Apollo	Lichfield Road Industrial Estate, Tamworth	Tamworth	Pre-Operational	Summit Systems	2044	350000	300000
Hot Lane Industrial Estate	Hot Lane Industrial Estate, Hot Lane, Burslem, Stoke on Trent	Stoke-on-Trent	Operational	L T R Services	373	387641	349391
J H & S Building Ltd	The Coal Yard, Milton Road, Milton, Stoke on Trent	Stoke-on-Trent	Operational	J H & S Building Ltd	374	389784	350093
Former Berrisford Transport Yard	Longbridge Hayes Industrial Estate, Chemical Lane, Stoke-on-Trent	Stoke-on-Trent	Pre-Operational	G T Talbot	670	385032	350413
4 Metfab House	Montrose Street, Fenton, Stoke-on-Trent	Stoke-on-Trent	Pre-Operational	W Morton	1199	389900	344273
5 Keele Street	Tunstall, Stoke-on-Trent	Stoke-on-Trent	Pre-Operational	I Ellahi	1200	385876	351549
Total Capacity						1,412,163	

Figure 6: Waste Transfer Facilities in Staffordshire and Stoke-on-Trent



(C) Crown Copyright and database rights 2011. Ordnance Survey 100019422. Produced by Staffordshire County Council, 2011. You are not permitted to copy, sub-license, distribute or sell any of this data to third parties in any form.

Table 10: Waste Transfer Facilities in Staffordshire and Stoke-on-Trent

Site Name	Address	District	Status	Operator	Min Waste	Eastings	Northing
Former Saw Mill Site, Cannock Wood Industrial Estate	Cannock Wood Industrial Estate, Cannock	Cannock Chase	Operational	Cronimet (Great Britain) Ltd	219	403337	312488
Unit 14A Cannock Wood Industrial Estate (Cronimet)	Cannock Wood Industrial Estate, Hazelslade, Cannock	Cannock Chase	Operational	Cronimet (Great Britain) Ltd	222	403297	312654
Unit 1, The Embankment, Power Station Road	Power Station Road, Rugeley	Cannock Chase	Operational	B & J Holdings	567	405019	318206
Cannock Household Waste & Recycling Centre	Leacroft Lane, Lichfield Road (Poplars Landfill Site)	Cannock Chase	Operational	Staffordshire County Council	304	399292	309742
Rugeley Household Waste & Recycling Centre	Station Road, Rugeley	Cannock Chase	Operational	Staffordshire County Council	220	404736	318721
Alda Skip Hire	Units 8/12 Bestmoor Ind Est, Station Road, Hednesford, Nr Cannock, Sta	Cannock Chase	Temporarily closed	A.J. Willelts / Alda Skip Hire	226	400459	313155
Associated Fuels Ltd	Cannock Ind Est, Walkmill Lane, Bridgtown, Cannock, Staffordshire	Cannock Chase	Operational	Associated Fuels	224	397921	308335
Poplars Landfill Site	Poplars Landfill, Lichfield Road, Cannock, Staffordshire	Cannock Chase	Operational	Biffa Waste Services Ltd	173	399285	309720
Compound 12, Watling Street Industrial Park, Watling Street, Cannock	Compound 12, Watling Street Industrial Park, Watling Street, Cannock	Cannock Chase	Operational	Mr Andrew Hughes	814	402382	306536
Goldings Plot 5, Nicolson Way	Plot 5, Nicolson Way, off Wellington Road, Burton-upon-Trent	East Staffordshire	Operational;	G.D. Golding Waste Transfer Station	207	423415	322436
Wilshes Skip Hire, Wharf Road	Burton-upon-Trent	East Staffordshire	Operational	Wilshes's Skip Hire Ltd	236	425162	323874
Green Pastures Pet Crematorium, Dove House	Dove House, Hollington Lane, Stramshall	East Staffordshire	Operational	Mr. A.S. Ward	314	406686	337068

Adoption version Staffordshire and Stoke-on-Trent Joint Waste Local Plan 2010 - 2026 Appendices

Site Name	Address	District	Status	Operator	Min Waste	Eastings	Northing
British Gas Transco	Wetmore Road, Burton-upon-Trent	East Staffordshire	Operational	British Gas, Transco	427	425413	324110
Unit 304A Fauld Camp Industrial Estate	Fauld Lane, Fauld	East Staffordshire	Operational	Magfern Recycling	572	419429	328774
Unit 25 Bramshall Industrial Estate	Unit 25 Bramshall Industrial Estate, Bramshall, Uttoxeter	East Staffordshire	Pre-operational	Boultons Skip Hire Ltd	756	404792	333072
Burton Household Waste Recycling Centre	Shobnall Road, Burton Upon Trent, Staffs	East Staffordshire	Operational	Staffordshire County Council	233	423470	323203
Wharf Lane, WTS	Wharf Lane, Burntwood	Lichfield	Operational	A T. Skip Hire	194	405053	307393
Lichfield Highways Depot	Trent Valley Road, Lichfield	Lichfield	Operational	Staffordshire County Council	241	413227	309825
Brickyard Farm, Hilliards Cross	Brickyard Farm, Hilliards Cross, Fradley	Lichfield	Operational	Mr. R. Jones / Jones Skips / Jones Metal Merchants	242	415220	311811
Lingfield, Drayton Lane	Drayton Lane, Drayton Bassett, Tamworth	Lichfield	Operational	R. A. Simpson & Son	401	419796	300787
Unit 20, Zone 4 Burntwood Business Park	Unit 20, Zone 4 Burntwood Business Park, Burntwood WS7 3XD	Lichfield	Operational	Greenstar	606	404182	308819
Unit 5 Trent Valley Trading Estate	Vulcan Road, Lichfield	Lichfield	Operational	E.A. Barnes & Sons Ltd	560	413058	310386
Burntwood Household Waste & Recycling Centre	Ring Road, Chase Terrace	Lichfield	Operational	Staffordshire County Council	247	403890	309160
Lichfield Household Waste & Recycling Centre	Trent Valley Road, Lichfield	Lichfield	Operational	Staffordshire County Council	243	413198	309777
Homestead	Green Planet Recycling & Skip Hire Ltd., Homestead, Croxall Road, AIRE	Lichfield	Pre-operational	Green Planet Recycling & Skip Hire Ltd	689	417908	314980
Turner Crescent Waste Transfer Station	Former Transport Depot, Turner Crescent, Chesterton	Newcastle-under-Lyme	Operational	Jumbo Skips, Ltd	211	383293	348441

Adoption version Staffordshire and Stoke-on-Trent Joint Waste Local Plan 2010 - 2026 Appendices

Site Name	Address	District	Status	Operator	Min Waste	Eastings	Northing
High Carr / High Carr Farm	High Carr, Chesterton, Newcastle-under-Lyme	Newcastle-under-Lyme	Operational;	Cherry Hill Skip Hire / Rossisle Development Co. Ltd	59	383726	351294
Chatterley Quarry	Chemical Lane, Burslem	Newcastle-under-Lyme	Operational	Joseph Kimberley & Sons Ltd	47	384681	350679
Plot 8 Parkhouse Industrial Estate	Parkhouse Road East, Chesterton, Newcastle	Newcastle-under-Lyme	Operational	Tidysite Skip Services Ltd	254	384073	350090
Future Waste & Reclamation, Chemical Lane	Longbridge Hayes, Newcastle	Newcastle-under-Lyme	Operational	Future Waste & Reclamation	257	385192	350119
Plots B, C, & D Longbridge Hayes Industrial Estate	Cross Street / Peel Street, Longbridge Hayes Industrial Estate, Newcastle-under-Lyme	Newcastle-under-Lyme	Operational	G. T. & C. Talbot (Mr. G. T. Talbot)	259	385316	349729
Central Depot, Newcastle-under-Lyme	Knutton Lane, Newcastle-under-Lyme	Newcastle-under-Lyme	Operational	Newcastle-under-Lyme Borough Council	479	384175	346300
Unit D Parkhouse Industrial Estate	Parkhouse Road East, Chesterton, Newcastle	Newcastle-under-Lyme	Operational	Stoke Civils	647	384175	350015
Leycett Household Waste and Recycling Centre	Leycett Lane, Silverdale	Newcastle-Under-Lyme	Operational	Staffordshire County Council	307	379093	346590
Corner Plot, Chemical Lane	Corner Plot, Chemical Lane, Longport	Newcastle-Under-Lyme	Operational	A1 Mini Skips Ltd	740	385200	350182
Alsager Contractors Ltd	Longbridge Hayes Ind Est, Peel Street, Longbridge, Newcastle under Lym	Newcastle-Under-Lyme	Operational	Alsager Contractors Ltd	259	385297	349713
Plots 17 & 18 Littleton Business Park	Cocksparrow Lane, Huntington, near Cannock	South Staffordshire	Operational	S & B Waste Management Recycling Ltd	270	397108	313216
1 Station Road, Four Ashes	1 Station Road, Four Ashes	South Staffordshire	Operational	Attero Services Ltd	302	391915	308739
Bilbrook Household Waste & Recycling Centre	Pendeford Mill Lane	South Staffordshire	Operational	Staffordshire County Council	303	388351	303503
Wombourne Household Waste & Recycling Centre	Botterham Lane, Wombourne	South Staffordshire	Operational	Staffordshire County Council	308	386182	291421

Adoption version Staffordshire and Stoke-on-Trent Joint Waste Local Plan 2010 - 2026 Appendices

Site Name	Address	District	Status	Operator	Min Waste	Eastings	Northing
Unit 3 Landywood Industrial Estate	Unit 3 Landywood Industrial Estate, Cheslyn Hay, Walsall	South Staffordshire	Operational	C & S Skip Hire	757	398667	306641
Prestwood Pet Cemetary Incinerator	Stapenhill Farm, Prestwood Drive, Stourton, Stourbridge, West Midlands	South Staffordshire	Operational	Prestwood Pet Cemetary	486	387692	285787
Unit 5 Sprint Industrial Estate	Unit 5 Sprint Industrial Estate, Station Road, Four Ashes	South Staffordshire	Operational	Lower Reule Bioenergy Ltd	701	391729	308616
Four Ashes Clinical Waste Treatment Plant and Transfer Station	2 Station Road Four Ashes Industrial Estate Four Ashes	South Staffordshire	Operational	SRCL Ltd	1183	391917	308762
Downings Waste Recovery Site	Common Road Industrial Estate, St Albans Road, Stafford	Stafford	Operational	Downings Waste Recovery	280	392380	325040
SBC Depot	Tollgate Ind Estate.	Stafford	Operational	Stafford Borough Council	499	392866	325569
Unit 13 Ladfordfields Industrial Estate	Unit 13 Ladfordfields Industrial Estate, Woodseaves Road, Seighford	Stafford	Operational	Polkacrest Ltd	623	386004	325957
Paturefields Enterprise Park	Pasturefields garage, Great Haywood	Stafford	Pre-operational	Ed. Weetman (Haulage & Storage) Ltd	278	399646	324798
Stafford Household Waste Recycling Facility	St Albans Road, Stafford	Stafford	Operational	Staffordshire County Council	277	392447	325095
Stone Household Waste Recycling Centre	Off Beacon Road, Stone Business Park, Stone	Stafford	Operational	Staffordshire County Council	599	390206	332383
Unit 1 Coldmeece Estate	Unit 1 Coldmeece Estate, Coldmeece, Stone	Stafford	Pre-operational	Global Operations Management Ltd	643	384891	332487
Unit 5, Airfield Industrial Estate	Unit 5, Airfield Industrial Estate, Seighford	Stafford	Non-operational	Global Operations Management Ltd	632	386077	325888
Downings (Waste Recovery) Limited	St Albans Road, Aston Fields Ind Est, Stafford, Staffordshire	Stafford	Operational	Downings Waste Recovery	280	392436	325087
Waste Management Site	Ed Weetman Ltd, Pasturefields Enterprise Park, Great Haywood, Stafford	Stafford	Pre-operational	Ed. Weetman (Haulage & Storage) Ltd.	278	399619	324829

Adoption version Staffordshire and Stoke-on-Trent Joint Waste Local Plan 2010 - 2026 Appendices

Site Name	Address	District	Status	Operator	Min Waste	Eastings	Northing
Lane Farm, Milwich Lane, Sandon	Lane Farm, Milwich Lane, Sandon	Stafford	Pre-operational	C. L. Prinold	1076	395556	330468
Fowlechurch Household Waste and Recycling Centre	Fowlechurch Road, Ball Haye Green, Leek	Staffordshire Moorlands	Operational	Staffordshire County Council	305	398678	357288
Arthur Wrights, Cheadle Community Waste Recycling and Transfer Station	Land off Draycott Cross Roads, Cheadle	Staffordshire Moorlands	Operational	Arthur Wright & Son	291	399333	342299
Bemmersley Household Waste Recycling Centre	Bemmersley Road, Brindley Ford	Staffordshire Moorlands	Operational	Staffordshire County Council	274	388360	354792
Cheadle Household Waste and Recycling Centre	New Haden Road, Brookhouses, Cheadle	Staffordshire Moorlands	Operational	Staffordshire County Council	512	399515	342554
Waste Management Site	Brookhouse Ind Est, Draycott Cross Road, Cheadle, Stoke On Trent, Staf	Staffordshire Moorlands	Operational	New Haden Metals Ltd. / Cheadle Skip Hire	290	399464	342443
Fowlechurch Depot/Staffordshire Moorlands D C	Fowlechurch Depot, Ball Haye Green, Leek, Staffs	Staffordshire Moorlands	Operational	Staffordshire Moorlands District Council	478	398726	357256
China St, Fenton (A. Redman & Son)	China Street, Fenton	Stoke-on-Trent	Operational	A. Redman & Son	284	389690	344246
Potteries Demolition, Fenton	Burnham Street, Fenton	Stoke-on-Trent	Operational	Potteries Demolition Co Ltd	296	390219	344353
Singers (1989) Ltd, Florida Close	Sneyd Industrial Estate, Burslem	Stoke-on-Trent	Operational	H. Brown & Son	343	387588	349621
Stoke Waste Transfer Station	Nevada Lane, Sneyd Industrial Estate, Burslem	Stoke-on-Trent	Operational	Biffa Waste Services Ltd	346	387776	349890
5-6 Stadium Industrial Estate, Sun Street, Hanley	5-6 Stadium Industrial Estate, Sun Street, Hanley, Stoke-on-Trent	Stoke-on-Trent	Operational	Hyasan Hygiene Services	424	387818	349753
Orcol Fuels Ltd, Stoke-on-Trent	Land at Hot Lane, Burslem	Stoke-on-Trent	Operational	OSS Group Ltd	425	387638	349433
Govan Road, Fenton (Mr. K.P. Parnell)	Govan Road, Fenton Industrial Estate	Stoke-on-Trent	Operational	Mr. K.P. Parnell	474	389744	345879
Fenton Park	Fenton Park, Seville Street, Fenton	Stoke-on-Trent	Operational	Stoke-on-Trent City Council	693	389519	345226

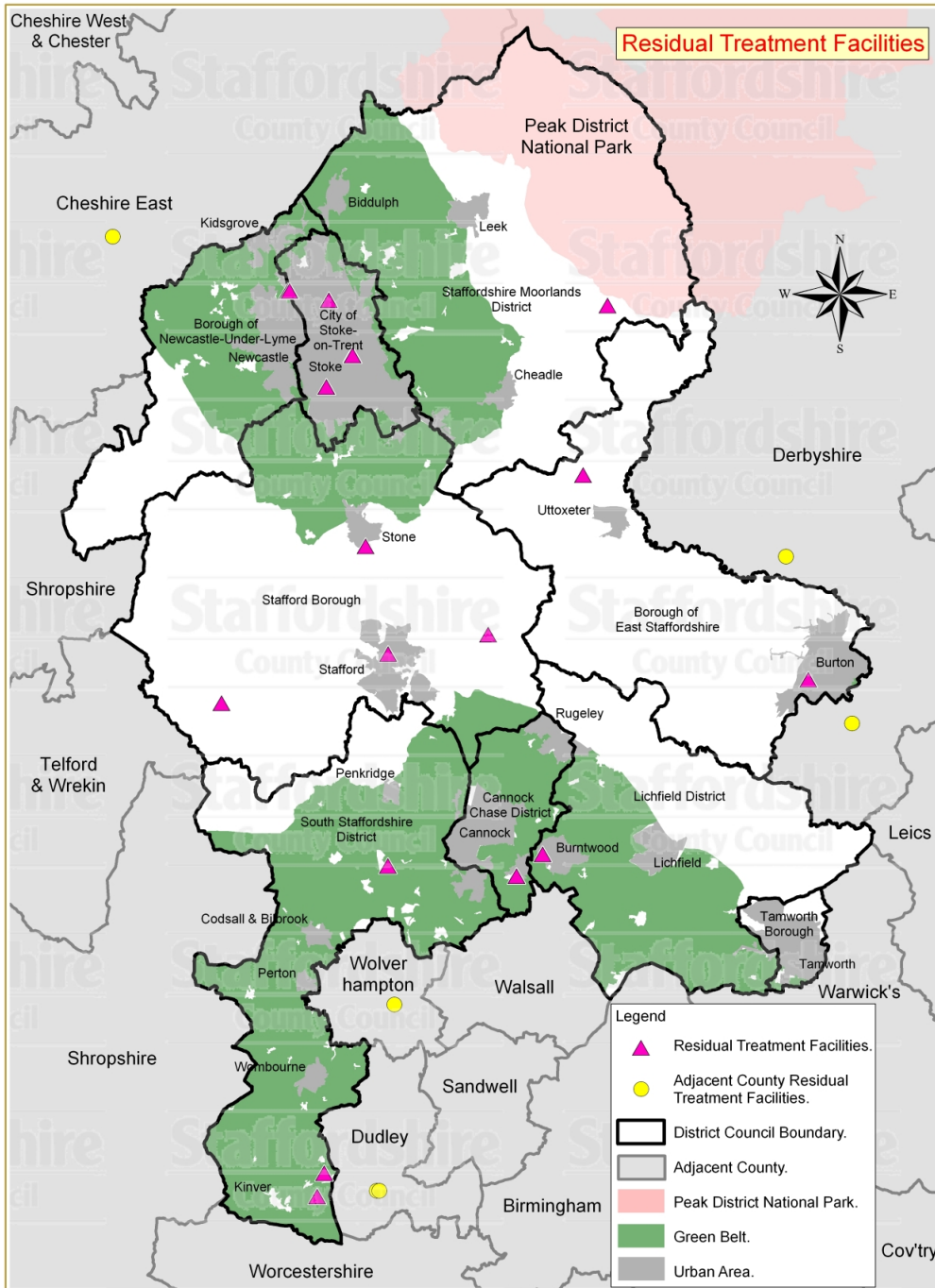
Site Name	Address	District	Status	Operator	Min Waste	Eastings	Northing
1-10 Burgess Street	1-10 Burgess Street, Middleport	Stoke-on-Trent	Operational	Unknown	695	386293	349312
Alton House	Cromer Road, Northwood	Stoke-on-Trent	Operational	Stoke-on-Trent City Council	672	389647	347727
Booth Street	Booth Street, Stoke-on-Trent	Stoke-on-Trent	Operational	Stoke-on-Trent City Council	692	387589	344769
Burslem Park	Burslem Park, Moorland Road, Burslem	Stoke-on-Trent	Operational	Stoke-on-Trent City Council	691	387409	350298
Sneyd Hill (J&K Oils)	Sneyd Hill, Burslem	Stoke-on-Trent	Operational	J & K Oils	687	387923	349755
Sneyd Hill WTS	Burslem, Stoke-on-Trent	Stoke-on-Trent	Operational	Red Industries Ltd	674	387916	349760
Tunstall Park	Tunstall Park, Greenbank Road, Tunstall	Stoke-on-Trent	Operational	Stoke-on-Trent City Council	690	386592	351462
Unit 9 Longport Enterprise Centre	Unit 9 Longport Enterprise Centre, Scott Lidget Road, Longport	Stoke-on-Trent	Operational	B F H Group Ltd	675	387490	349528
Unit A2 - A4 Sneyd Hill Industrial Estate	Unit A2 - A4 Sneyd Hill Industrial Estate, Sneyd Hill, Burslem	Stoke-on-Trent	Operational	P H S Group PLC	679	387783	349799
Weighbridge Site, Cromer Road	Cromer Road, Northwood	Stoke-on-Trent	Operational	Stoke-on-Trent City Council	673	389578	347906
Hot Lane Industrial Estate	Hot Lane Ind Est, Hot Lane, Burslem, Stoke On Trent, Staffs	Stoke-on-Trent	Pre-operational	L.T.R. Recovery Services	345	387567	349663
Longton Park	Longton Park, Cocknage Road, Dresden, Stoke On Trent, Staffs	Stoke-on-Trent	Operational	Stoke-on-Trent City Council	309	390603	343660
Stoke On Trent Household Waste & Recycling Centre	Stoke On Trent H W S & R C, Campbell Road, Sideway, Stoke On Trent, St	Stoke-on-Trent	Operational	Stoke-on-Trent City Council	310	387841	343523
Federation Road Household Waste Site	Burslem H W S, Federation Road, Burslem, Stoke On Trent, Staffs	Stoke-on-Trent	Operational	Stoke-on-Trent City Council	311	386579	350241
Waste Management Site	Barker Street, Longton, Stoke On Trent, Staffordshire	Stoke-on-Trent	Operational	Stoke-on-Trent City Council	810	391592	343111

Adoption version Staffordshire and Stoke-on-Trent Joint Waste Local Plan 2010 - 2026 Appendices

Site Name	Address	District	Status	Operator	Min Waste	Eastings	Northing
Unit 2 & 3, Plot 29 Mica Close, Amington Industrial Estate	Mica Close, Amington Industrial Estate, Tamworth	Tamworth	Operational	Tamworth Waste Disposal Ltd / Kangaroo Skips	293	424019	302800
W. M. Briers & Son (Tamworth) Ltd	Anchor Sidings, Glascoate Road, Tamworth	Tamworth	Operational	W. M. Briers & Son (Tamworth) Ltd	440	421841	303576
Sandy Way	159b Amington Ind Est, Sandy Way, Amington, Tamworth, Staffs	Tamworth	Operational	Tamworth Borough Council	811	424051	302970
Burntwood Skip Hire	Plot No5, Landywood Lane, Cheslyn Hay	South Staffordshire	Operational	Nathan James Boot	604	398741	306598
Burslem Waste Recycling Centre	Old Canal Wharf, Navigation Road, Burslem	Stoke-on-Trent	Operational	Potteries Waste Ltd	331	386560	349169
Burton Skip Hire	Shobnall Road, Burton Upon Trent	East Staffordshire	Operational	Burton Skip Hire Ltd	511	423550	325123
E J Reeves Transfer Station	Land at Four Lane Ends Farm, Adbaston, Ecceshall	South Staffordshire	Operational	Mr Eustace John Reeves	454	376650	329720
Junction of Paragon Road & Sutherland Road Hhold/Ind TS	Junction of Paragon Road and Sutherland Road, Longton, Stoke-on-Trent	Stoke-on-Trent	Operational	CA & DJ Prestley	307	391486	343270
LWD Waste Services	Barnfield Industrial Estate, Sunnyhills Road, Leek, Staffs	Staffordshire Moorlands	Operational	Mr R Bestwick	130	397600	355300
LW Skip Hire	Cannock Wood Industrial Centre, Unit 14, Cannock Wood Street, Cannock Wood	Cannock Chase	Operational	Mr L Wallace	707	403248	312503
Leigh Environmental Southern Ltd	1 Station Road, Four Ashes, Wolverhampton	South Staffordshire	Operational	Leigh Environmental	614	391962	308529
Part of Hot Lane Industrial Estate	Hot Lane Industrial Estate, Hot Lane, Burslem	Stoke-on-Trent	Operational	T/A Shralely House Farm	373	387641	349391
The Embankment	The Embankment, Power Station Road, Rugeley	Cannock Chase	Operational	B & J Holdings	720	405070	318250
Unit 5b Sprint Industrial Estate	Unit 5b Sprint Industrial Estate	South Staffordshire	Operational		655	391718	308594
Uttoxeter Household Waste & Recycling Centre	Pennycroft Lane, Uttoxeter	East Staffordshire	Operational	South Herts Waste Management	513	409223	334157

Site Name	Address	District	Status	Operator	Min Waste	Easting	Northing
Wasteaway	Bodnetts Farm, Plantation Lane, Hopwas, Tamworth	Lichfield	Operational	G Wylie & Sons	810	417720	304030
Unit 9, Mossfield Road	Mossfield Road, Adderley Green, Stoke-on-Trent	Stoke-on-Trent	Operational	N. Bates	1197	391394	344892
Sneyd Hill Trading Estate, Sneyd Hill	Sneyd Hill Trading Estate, Sneyd Hill	Stoke-on-Trent	Pre-Operational	T Whittaker	1198	387910	349755
Total Capacity						1,762,491	

Figure 7: Residual Treatment Facilities in Staffordshire and Stoke-on-Trent



(C) Crown Copyright and database rights 2011. Ordnance Survey 100019422. Produced by Staffordshire County Council, 2011. 'You are not permitted to copy, sub-license, distribute or sell any of this data to third parties in any form'.

Table 11: Residual Treatment Facilities in Staffordshire and Stoke-on-Trent

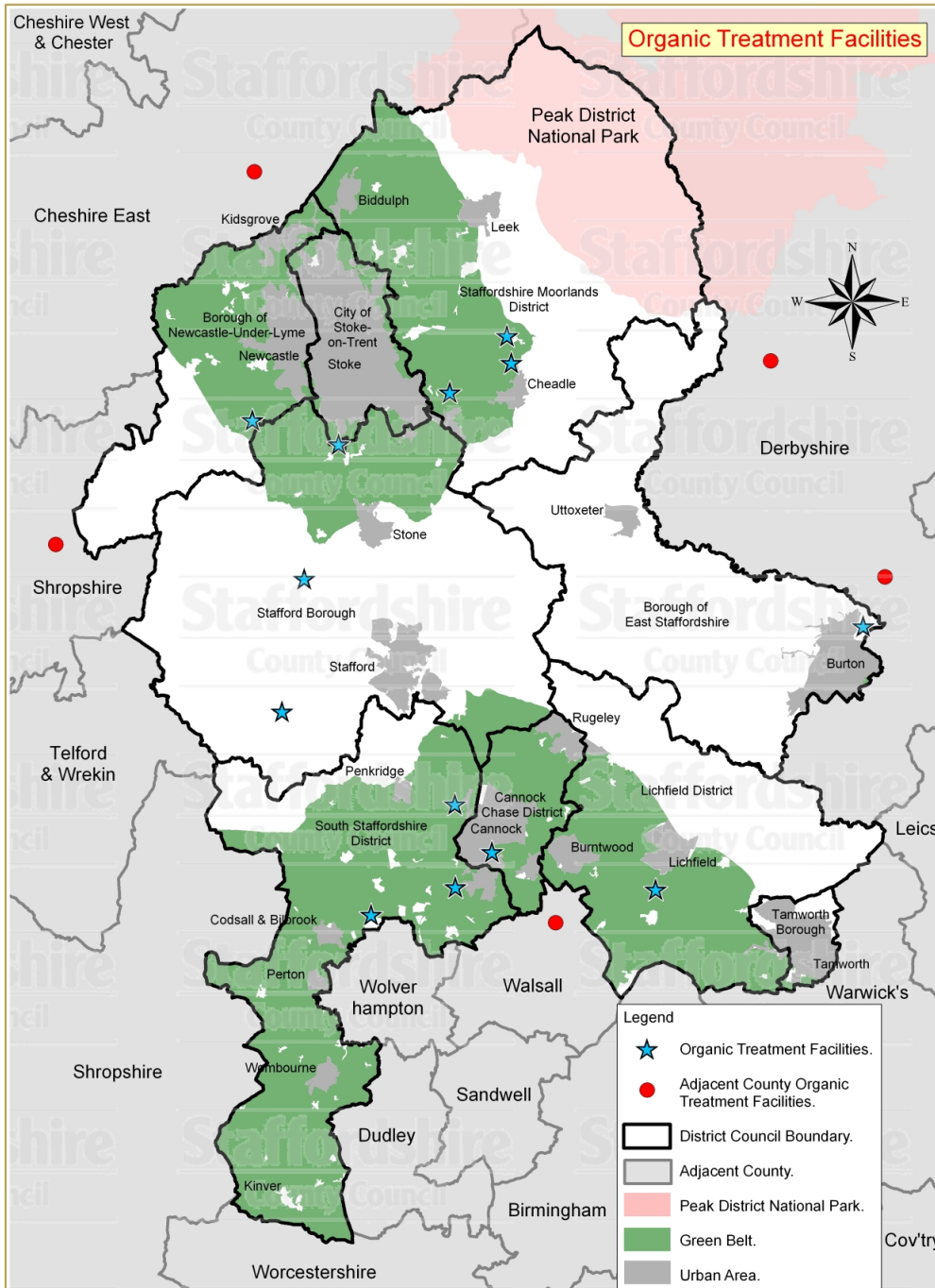
Site Name	Address	District	Status	Operator	Min Waste	Existing	Nothing
Energy from Waste facilities							
Sinergy Energy from Waste Plant	Campbell Road, Hanford, Stoke-on-Trent	Stoke-on-Trent	Operational	Stoke-on-Trent City Council	312	387844	343532
H Brown and Son Recycling Ltd	Land at Sneyd Hill, Sneyd Hill, Stoke-on-Trent	Stoke-on-Trent City	Pre- operational	H. Brown & Son	796	388014	349898
The Dell off Enterprise Drive (Four Ashes/W2R)	The Dell, Enterprise Drive, Four Ashes, Wolverhampton, Staffs	South Staffordshire	Pre- operational	Staffordshire County Council	536	392356	308346
					Total Capacity	590,000	
Residual Treatment Facilities							
Green Pastures Pet Crematorium, Dove House	Dove House, Hollington Lane, Stramshall	East Staffordshire	Operational	Mr. A. S. Ward	314	406702	337051
Technic Tyre Plc, Plot 6 Wellington Park	Plot 6 Wellington Park, Wellington Road, Burton upon Trent	East Staffordshire	Operational	Technic Tyre Plc	428	423244	322033
Chase Terrace Ind Est, Ring Road	Chase Terrace Ind Est, Ring Road,	Lichfield	Operational	DME Tyres Ltd.	437	403727	309207

Adoption version Staffordshire and Stoke-on-Trent Joint Waste Local Plan 2010 - 2026 Appendices

Site Name	Address	District	Status	Operator	Min Waste	Easting	Northing
	Chase Terrace, Burntwood, Staffs						
Castle Environmental	Valley Works, Chemical Lane, Longport, Stoke On Trent, Staffs	Newcastle-Under-Lyme	Operational	Castle Oils Ltd. /Castle Waste Services	261	385004	350556
Waste Oil Facility (OSS), Stoke-on-Trent	Valley Works, Chemical Lane, Longport	Newcastle-Under-Lyme	Operational	OSS Group Ltd	342	385140	350579
Govan Road, Fenton (Go Environmental Ltd)	Govan Road, Fenton, Stoke On Trent, Staffs	Stoke-on-Trent	Operational	Go Environmental Ltd	474	389746	345883
Prestwood Pet Cemetary Incinerator	Stapenhill Farm, Prestwood Drive, Stourton, Stourbridge, West Midlands	South Staffordshire	Pre- operational	Prestwood Pet Cemetary	486	387695	285785
Swan Pit Farm	Adjacent to the A518 Newport Road, 1.5 km west of Gnosall	Stafford	Operational	G.R. & E.E. McMaster Swan Pit Farm	333	380148	320312
Omega House	Omega House, Emerald Way, Stone Business Park, Stone, Staffs	Stafford	Operational	Stone Computers Ltd	817	390743	331831
Homestead	Green Planet Recycling & Skip Hire,	Lichfield	Operational	Green Planet Recycling	859	417909	314978

Site Name	Address	District	Status	Operator	Min Waste	Existing	Nothing
	Homestead, Croxall Road, Alrewas						
Unit 15 & 15A Cannock Industrial Estate	Unit 15 & 15A Cannock Industrial Estate, Walkmill Lane, Bridgtown, Cannock Chase	Cannock Chase	Operational	Proactive Waste Solutions	722	397860	308280
Cannock Auto Salvage	Chasetown Ind Est, Unit 10, off East Cannock Road, Hednesford, Cannock	Cannock Chase	Operational	Peter Rogers and Neil Webb	715	399624	311261
Total Capacity					290,795		
Total Residual Treatment Capacity					880,795		

Figure 8 Organic Treatment Facilities in Staffordshire and Stoke-on-Trent



(C) Crown Copyright and database rights 2011. Ordnance Survey 100019422. Produced by Staffordshire County Council, 2011. 'You are not permitted to copy, sub-license, distribute or sell any of this data to third parties in any form'.

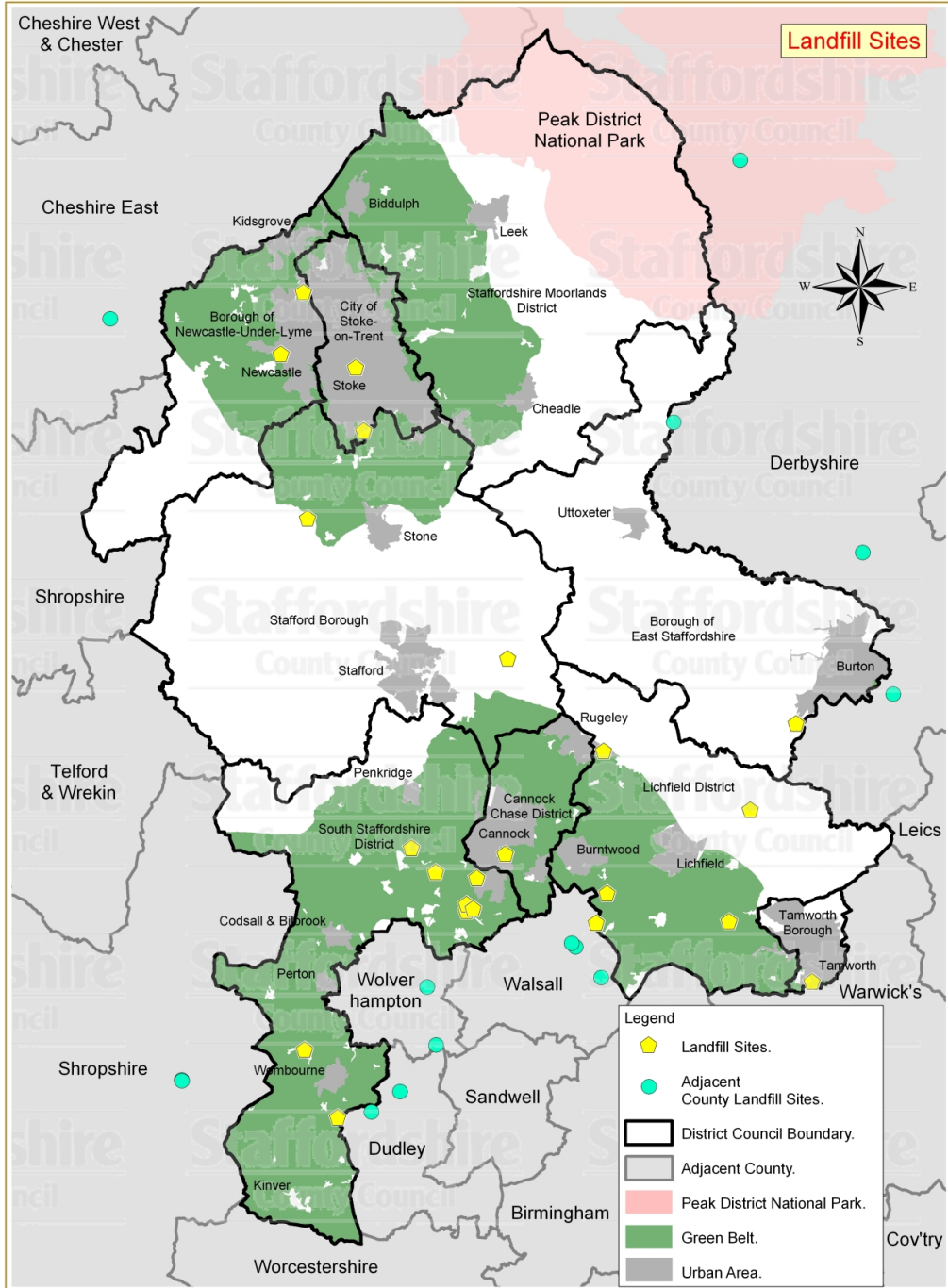
Table 12: Organic Treatment Facilities in Staffordshire and Stoke-on-Trent

Site Name	Address	District	Status	Operator	Min Waste	Eastings	Northing
Anaerobic Digestion							
Poplars Landfill	Leacraft Lane, Lichfield Road	Cannock Chase	Anaerobic Digestion Operational	Biffa Waste Services Ltd	173	399182	309300
Brookfield Farm	Brookfield Farm, Lower Reule, Church Eaton	Stafford	Anaerobic Digestion Pre-operational	Lower Reule Farm Ltd	700	383771	319611
Pointons, Cheddleton	Felthouse Lane, Cheddleton	Staffordshire Moorlands	Anaerobic Digestion Pre-operational	John Pointon & Sons	1184	397308	350565
Biological Treatment							
Strongford Sewage Treatment Works	Strongford Sewage Treatment Works, Barlaston Old Road, Stoke On Trent.	Stoke-on-Trent City	Biological treatment operational	Severn Trent Water Ltd	481	387905	339238
Claymills Sewage Works	Meadow Lane, Burton On Trent, Derbyshire	East Staffordshire	Biological treatment operational	Severn Trent Water Ltd	313	426438	325873
Open Windrow composting							
Acton on-farm Compost	Acton, Whitmore	Newcastle-under-Lyme	Open Windrow composting operational	Simpro Ltd	489	381595	341012
Lawn Lane, Coven	Lawn Lane, Coven	South Staffordshire	Open Windrow composting operational	Simpro Ltd	383	390307	304708
Mill Farm	Stone Road, Chebsey	Stafford	Open Windrow Composting operational	Mr. Robert Ainsworth	532	385392	329368
Cressford Farm	Caverswall Lane, Dilhorne	Staffordshire Moorlands	Open Windrow composting operational	Moorland Green Waste Recycling	283	396082	343059
Booths Farm	Clamgoose Lane, Cheadle	Staffordshire Moorlands	Open Windrow composting operational	Fallows Landfill	11	400600	345211

Adoption version Staffordshire and Stoke-on-Trent Joint Waste Local Plan 2010 - 2026 Appendices

Site Name	Address	District	Status	Operator	Min Waste	Easting	Northing
Land Adjacent to Kingsley Brickworks	Kingsley	Staffordshire Moorlands	Open Windrow composting operational	Beta Green Composters	614	400287	347209
Open Windrow composting & In-Vessel Composting							
Manor Farm, Wall	Manor Farm, Wall	Lichfield	Open Windrow composting operational & In-Vessel Composting Pre-operational	Messrs. W. J. & A.J.W. Ryman	519	411207	306546
Open Windrow composting & Anaerobic Digestion							
Cocksparrow Lane, Huntington	Former Littleton Colliery coal stocking area	South Staffordshire	Open Windrow composting operational & Anaerobic Digestion Pre-operational	William Gabriel Ltd	206	396466	312813
In-Vessel Composting & Open Windrow							
Hollybush Garden Centre	Warstone Road, Shareshill	South Staffordshire	In-Vessel Composting operational & Open Windrow composting operational	Jack Moody Ltd	423	396488	306726
					Total Capacity	562,379	

Figure 9 Landfill Sites in Staffordshire and Stoke-on-Trent



(C) Crown Copyright and database rights 2011. Ordnance Survey 100019422. Produced by Staffordshire County Council, 2011. You are not permitted to copy, sub-license, distribute or sell any of this data to third parties in any form'.

Table 13: Landfill Sites in Staffordshire and Stoke-on-Trent

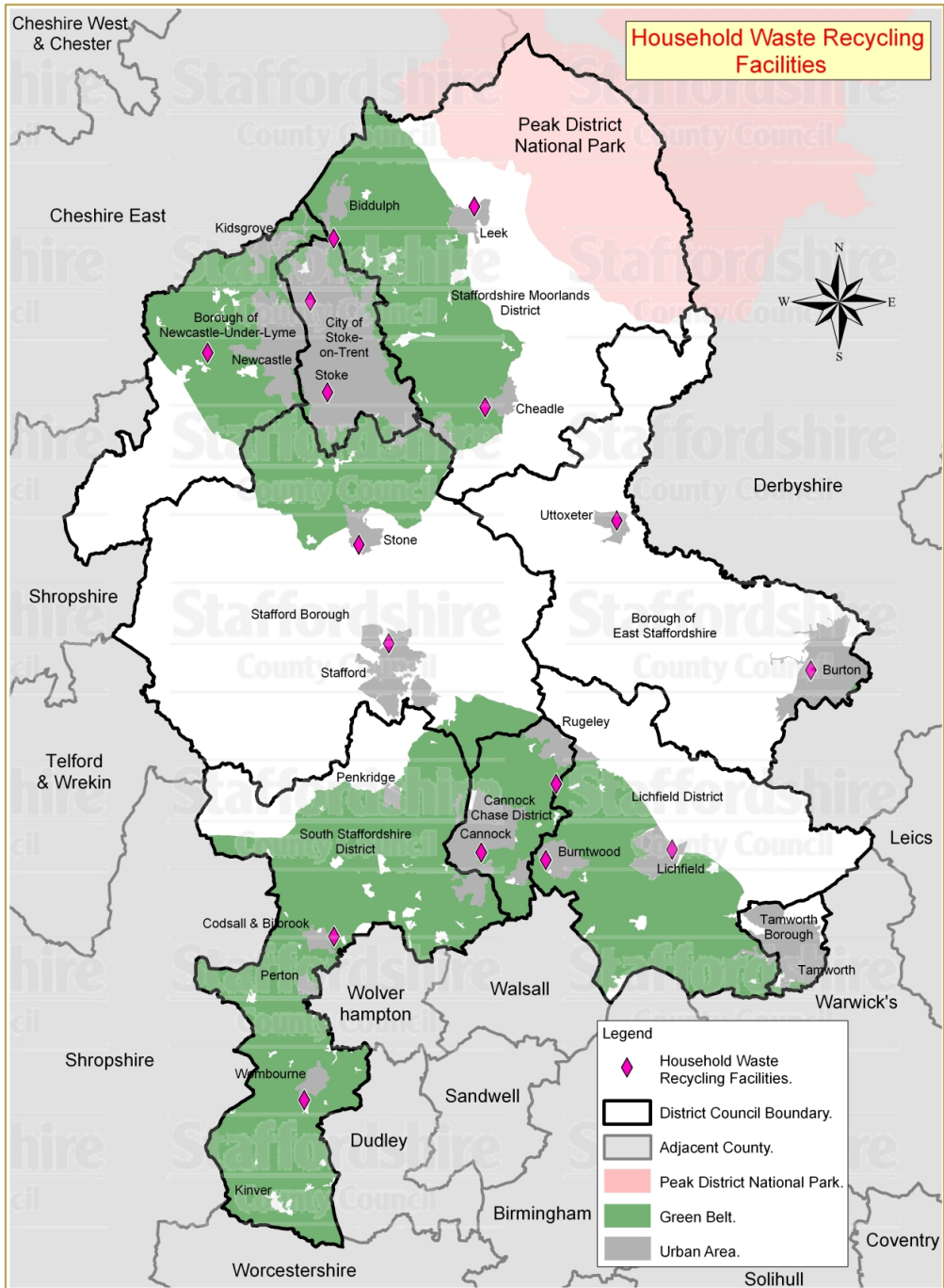
Site Name	Address	District	Operator	Min Waste	Eastings	Northing
Hazardous Landfill Cell - non operational						
Meece Landfill	Swynnerton, Cold Meece, nr Stone	Stafford	Biffa Waste Services Ltd	110	385010	334007
				Total Capacity	Confidential	
Non hazardous Landfill - operational						
Poplars Landfill	Leacroft Lane - Lichfield Road	Cannock Chase	Biffa Waste Services Ltd	173	399541	309297
Meece Landfill	Swynnerton, Cold Meece, nr Stone	Stafford	Biffa Waste Services Ltd	110	385010	334007
Newbold and Tucklesholme Farm	Lichfield Road, Barton-under-Needwood, Burton-upon-Trent	East Staffordshire	Aggregate Industries UK Ltd	120	420886	318900
Newstead Disposal Area	Newstead Industrial Estate, Alderflat Drive, Trentham	Stoke-on-Trent	Biffa Waste Services Ltd	70	389132	340459
Walleys Quarry	Cemetery Road, Silverdale	Newcastle-under-Lyme	Lafarge Aggregates Ltd	46	383053	346095
				Total Capacity	13,900,000	
Non-hazardous Landfill - non/pre-operational						
Rugeley Power Station - Borrow Pit	Former Borrow Pit, Rugeley Power Station	Lichfield	International Power, Rugeley Power Ltd	642	406763	316867
Wilnecote	Rush Lane, Dosthill	Tamworth	Hanson Building Products Ltd	202	422072	299904
				Total Capacity	4,400,000	
Non hazardous landfill - planning obligated (mineral site with planning permission to restore by landfill)						
Saredon	Saredon Road, Saredon, Shareshill	South Staffordshire	Biffa Waste Services Ltd	140	394407	307968
Redhurst and Essington	Land to the North and South of Hobnock Road, Warstone Road, Essington	South Staffordshire	Ibstock Brick Ltd	146	396705	305094

Adoption version Staffordshire and Stoke-on-Trent Joint Waste Local Plan 2010 - 2026 Appendices

Site Name	Address	District	Operator	Min Waste	Easting	Northing
Holly Bank	Essington, South Staffordshire	South Staffordshire	Cumberstone Properties Ltd c/o Katie Parnell Ltd	147	397172	305288
Warstones	Warstones Road, Essington	South Staffordshire	Wienerberger Ltd	168	396694	305599
Rosemary Quarry (Cheslyn Hay/Rosemary Work)	Rosemary Works, Rosemary Road/Coppice Lane, Cheslyn Hay, Cannock	South Staffordshire	Monier Ltd	148	397434	307541
				Total Capacity	12,000,000	
Inert landfill - operational						
Whitemoor Haye	Berley Green Lane, Alrewas	Lichfield	Lafarge Aggregates Ltd	198	417534	312555
Cranebrook	Cranebrook Quarry, Cranebrook Hill, Muckley Corner, Lichfield, Staffordshire	Lichfield	Walsall Concrete	186	407000	306395
Enville Road	Wallheath	South Staffordshire	F.G. Davis & Son Ltd	162	387225	289905
Seisdon & Trysull	Church Lane, Trysull	South Staffordshire	Tarmac Ltd	153	384793	294893
Hints & Packington Hill (Hopwas)	Hints, near Tamworth	Lichfield	Tarmac Ltd	564	415984	304336
Newbold and Tucklesholme Farm	Lichfield Road, Barton-under-Needwood, Burton-upon-Trent	East Staffordshire	Aggregate Industries UK Ltd	120	420886	318900
Mount Pleasant Farm	Banktop Road, Dilhorne, Stoke-on-Trent	Stoke-on-Trent	Swindon Driving Range Limited	181	396604	346666
Horseshoe Farm	Combridge, Uttoxeter	East Staffordshire	C Ellam	5005	409589	337687
Swindon Golf Club	Bridgenorth Road, Swindon	South Staffordshire	Swindon Driving Range Limited	662	384326	291758
				Total Capacity	3,487,000	
Inert landfill - non/pre-operational						
Shire Oak	Lichfield Road, Brownhills	Lichfield	Tarmac Ltd	192	406205	304224
Fenton Manor Quarry	Lordship Lane	Stoke-on-Trent	Biffa Waste Services Ltd	82	388544	345093

Site Name	Address	District	Operator	Min Waste	Easting	Northing
Total Capacity						
Confidential						
Inert landfill - planning obligated mineral site with planning permission to restore by landfill						
Four Ashes (Calf Heath)	Calf Heath, Four Ashes, South of J. 12 of the M6	South Staffordshire	Lafarge Aggregates Ltd	553	392635	309740
Chatterley Quarry	Chemical Lane, Burslem	Newcastle-under-Lyme	Joseph Kimberley & Sons Ltd	47	384715	350648
Total Capacity				685,000		

Figure 10: Household Waste Recycling Facilities in Staffordshire and Stoke-on-Trent



(C) Crown Copyright and database rights 2011. Ordnance Survey 100019422. Produced by Staffordshire County Council, 2011. 'You are not permitted to copy, sub-license, distribute or sell any of this data to third parties in any form'.

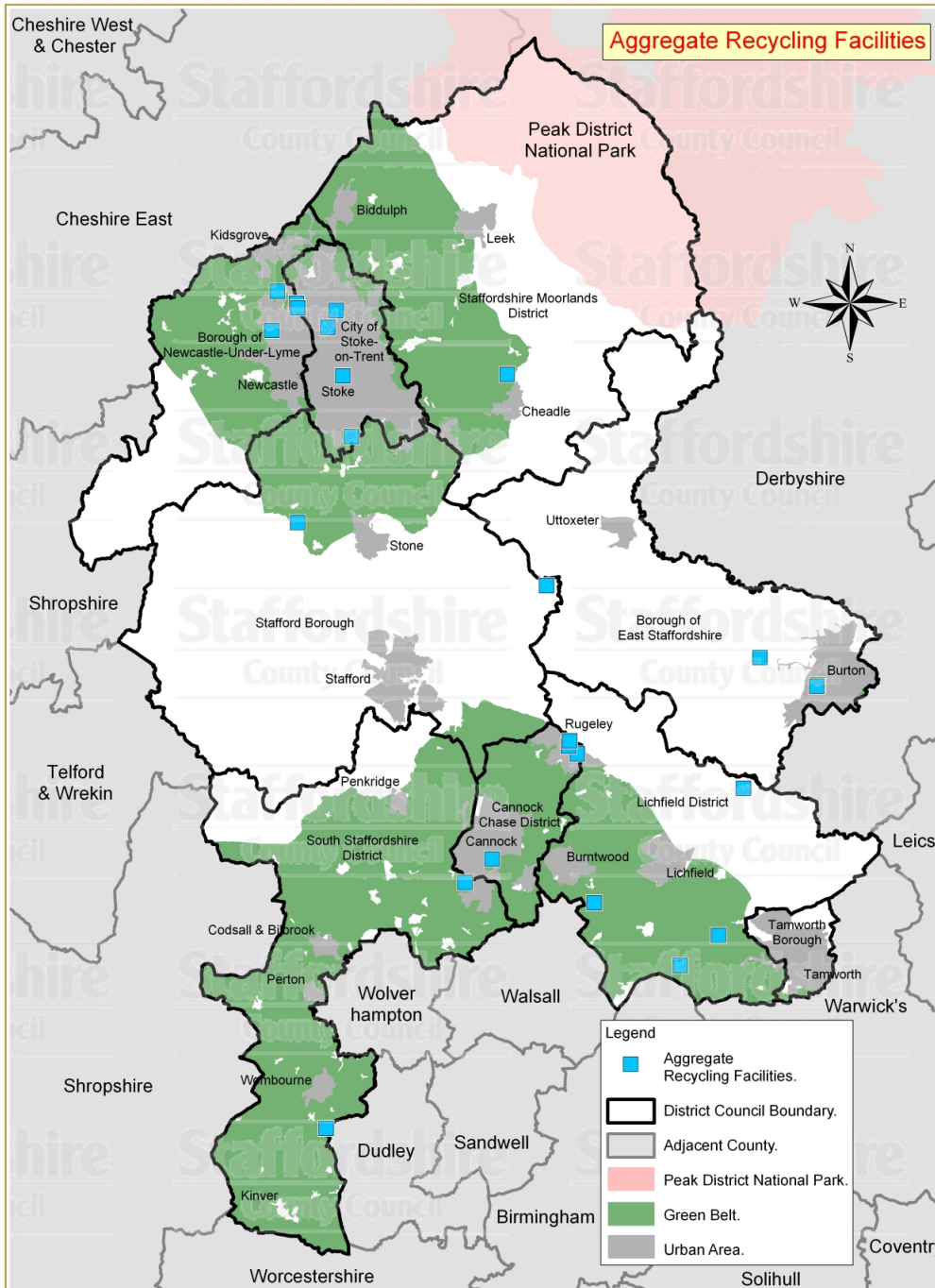
Table 14: Household Waste Recycling Facilities in Staffordshire and Stoke-on-Trent

Site Name	Address	District	Status	Operator	Min Waste	Easting	Northing
Rugeley Household Waste and Recycling Centre	Station Road, Rugeley	Cannock Chase	Operational	Staffordshire County Council	220	404683	314676
Cannock Household Waste and Recycling Centre	Leacroft Lane - Lichfield Road, (Poplars Landfill site)	Cannock Chase	Operational	Staffordshire County Council	304	399164	309632
Burton-Upon-Trent, Household Waste and Recycling Centre	Staffordshire County Highways Depot, Shobnall Road, Burton-upon-Trent	East Staffordshire	Operational	Staffordshire County Council	233	423415	323070
Uttoxeter Household Waste and Recycling Centre	Pennycroft Lane, Uttoxeter	East Staffordshire	Operational	Staffordshire County Council	237	409155	334075
Lichfield Household Waste and Recycling Centre	Trent Valley Road, Lichfield	Lichfield	Operational	Staffordshire County Council	243	413218	309843
Burntwood Household Waste and Recycling Centre	Ring Road, Chase Terrace	Lichfield	Operational	Staffordshire County Council	247	403921	309080
Leycett Household Waste and Recycling Centre	Leycett Lane, Silverdale	Newcastle	Operational	Staffordshire County Council	307	379018	346447
Bilbrook household Waste and Recycling Centre	Pendeford Mill Lane, Codsall	South Staffordshire	Operational	Staffordshire County Council	303	388312	303444
Wombourne Household Waste and Recycling Centre	Botterham Lane, Wombourne	South Staffordshire	Operational	Staffordshire County Council	308	386139	291410

Adoption version Staffordshire and Stoke-on-Trent Joint Waste Local Plan 2010 - 2026 Appendices

Site Name	Address	District	Status	Operator	Min Waste	Easting	Northing
Stafford Household Waste Recycling Centre / Stafford Waste Reception Site	St Albans Road, Stafford	Stafford	Operational	Staffordshire County Council	277	392361	325043
Stone Household Waste Recycling Centre and Highway Salt Storage Facility	Off Beacon Road, Stone Business Park, Stone	Stafford	Operational	Staffordshire County Council	599	390161	332306
Bemersley Household Waste Recycling Centre	Bemersley Road, Brindley Ford, Nr Biddulph	Staffordshire Moorlands	Operational	Staffordshire County Council	274	388329	354849
Fowtchurch Household Waste and Recycling Centre	Fowtchurch Road, Ball Haye Green, Leek	Staffordshire Moorlands	Operational	Staffordshire County Council	305	398669	357208
Cheadle Household Waste and Recycling Centre	New Haden Road, Brookhouses, Cheadle	Staffordshire Moorlands	Operational	Staffordshire County Council	512	399448	324421
Campbell Road Household Waste Recycling Centre	Campbell Road, Hanford	Stoke-on-Trent City	Stoke-on-Trent City Council	Stoke-on-Trent City Council	310	387850	343524
Federation Road Household Waste Recycling Centre	Federation Road, Burslem	Stoke-on-Trent City	Stoke-on-Trent City Council	Stoke-on-Trent City Council	311	386579	350252

**Figure 11: Aggregate Recycling Facilities in Staffordshire and
Stoke-on-Trent**



(C) Crown Copyright and database rights 2011. Ordnance Survey 100019422. Produced by Staffordshire County Council, 2011. You are not permitted to copy, sub-license, distribute or sell any of this data to third parties in any form.

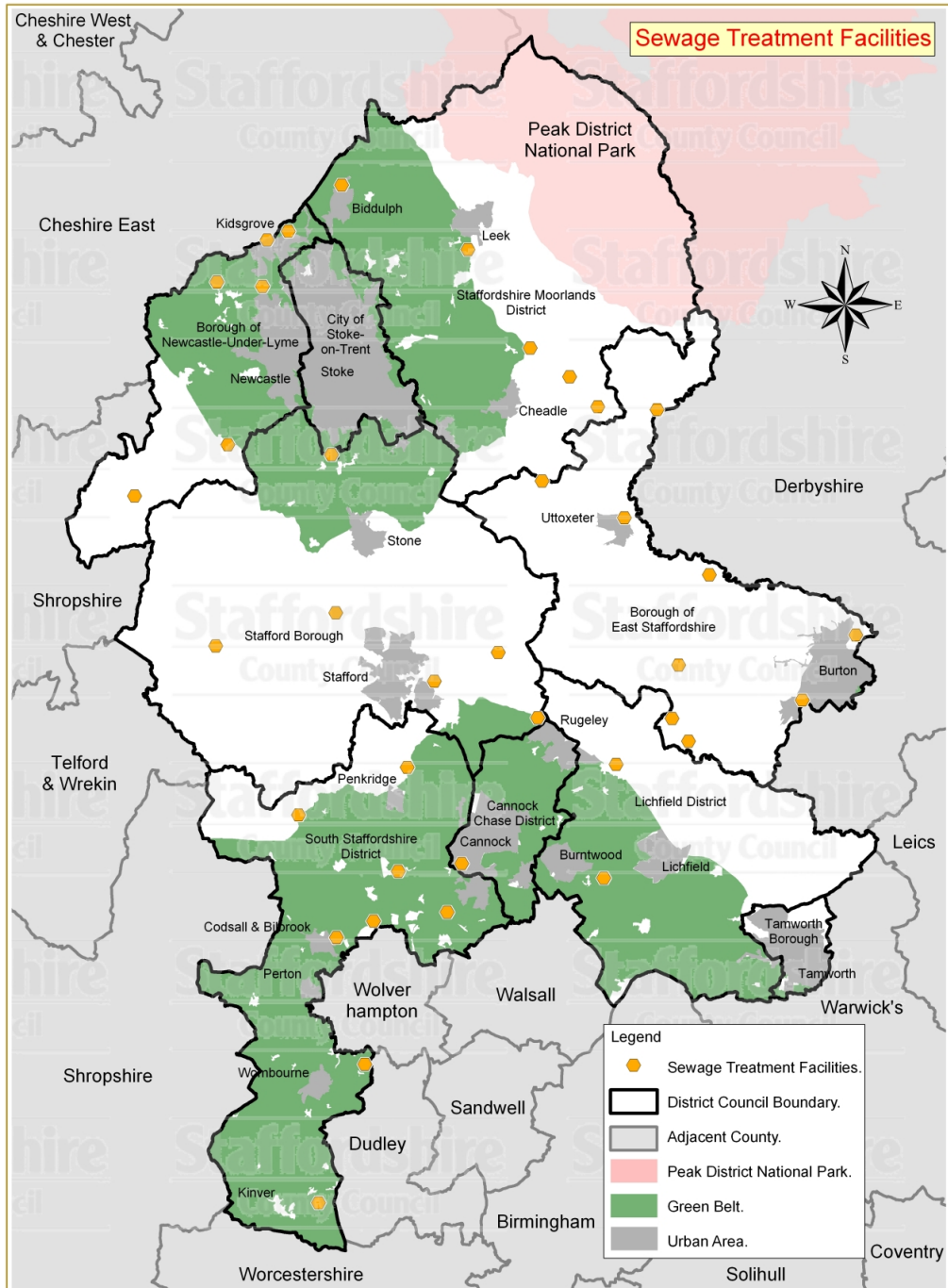
Table 15: Aggregate Recycling Facilities in Staffordshire and Stoke-on-Trent

Site Name	Address	Min Waste	Estgts	Nbrfrgs
Rosemary Quarry (Cheslyn Hay/Rosemary Work)	Rosemary Works, Rosemary Road/Coppice Lane, Cheslyn Hay, Cannock	148	397600	307800
Cranebrook	Cranebrook Quarry, Cranebrook Hill, Muckley Corner, Lichfield	186	407000	306400
Plot 4 Nicolson Way (Tim Bates Plant Hire)	Plot 4, Nicolson Way, off Wellington Road, Burton-Upon-Trent	602	423390	322414
Enville Road	Wallheath, Dudley, West Midlands	162	387300	289800
Barleyfields, Bellhouse Lane	Anslow, Burton upon Trent	316	419162	324427
Goldings Plot 5 off Nicolson Way	Goldings Plot 5 off Nicolson Way, Burton-Upon-Trent	207	423336	322328
Alrewas & Alrewas North	Alrewas Quarry, Croxall Road, Alrewas, Burton-Upon-Trent	195	417916	314821
Newstead Disposal Area	Newstead Ind Est, Alderflat Drive, Trentham, Stoke-On-Trent	70	389126	340678
Former Carless Refinery (Former AshTarr / Tarr Waste Management Site)	The former Carless Refining and Marketing Ltd site, Chemical Lane, Longport	386	385123	350439
Grange Works	Greyhound Way, Cobridge, Stoke-on-Trent	500	387436	348672
Hints and Packington Hill (Hopwas)	Hints - Hints, nr. Tamworth and Packington Hill (Hopwas) - Knox's Grave Lane, Hopwas	564	416119	304025
Rugeley Power Station - Materials Recycling Facility	Rugeley Power Station, Rugeley	610	406685	317341
Land off Power Station Road, adjacent to the Rugeley Bypass	Land off Power Station Road adjacent to the Rugeley Bypass, Cannock Chase	669	405088	317919
Land at Nicolson Way (Tim Bates)	Nicolson Way, Burton-Upon-Trent	743	423336	322328
Booths Farm	Clamgoose Lane, Cheadle	11	400590	345215
Meece Recycling and Transfer Facility	Adjacent to Meece Landfill, Cold Meece	301	385200	334340

Adoption version Staffordshire and Stoke-on-Trent Joint Waste Local Plan 2010 - 2026 Appendices

Site Name	Address	Min Waste	Estgts	Nettngs
Poplars Landfill Site	Poplars Landfill, Lichfield Road, Cannock	173	399477	309480
H Brown and Son Recycling Ltd	Land at Sneyd Hill, Sneyd Hill, Stoke-on-Trent	796	388035	349901
Grindley House Farm	Grindley House Farm, Grindley, Stafford	331	403496	329705
Future Waste & Reclamation	Longbridge Hayes, Newcastle-Under-Lyme	257	385219	350108
High Carr / High Carr Farm	High Carr, Chesterton, Newcastle-Under-Lyme	59	383736	351313
Fenton Manor Quarry	Lordship Lane, Fenton, Stoke-on-Trent	82	388543	345084
Turner Crescent	Former Transport Depot, Turner Crescent, Chesterton	211	383306	348440
Cockshutt Sidings	Shelton new Road, Cliffe Vale, Stoke-on-Trent	300	387169	346361
Ultoxeter Quarry	Land adjacent to the A50 Bypass, Ultoxeter	128	409800	335000
Sunshine Farm	Hilton Lane, Essington, Wolverhampton	1176	396823	305357
Hollybush Recycling Centre	Warstone Road, Sharesill	423	396515	306475
Total Capacity			1,020,440	

Figure 12: Sewerage Treatment Works in Staffordshire and Stoke-on-Trent



(C) Crown Copyright and database rights 2011. Ordnance Survey 100019422. Produced by Staffordshire County Council, 2011. You are not permitted to copy, sub-license, distribute or sell any of this data to third parties in any form.

Table 16: Sewerage Treatment Works in Staffordshire and Stoke-on-Trent

Site Name	Status	Operator	Min Waste	Easting	Northing
Alton Sewage Treatment Works	Operational	Severn Trent Water Limited	338	407488	342661
Armitage Sewage Treatment Works	Operational	Severn Trent Water Limited	319	408850	316350
Audley Sewage Treatment Works	Operational	United Utilities PLC	555	379526	351836
Biddulph Sewage Treatment Works	Operational	United Utilities PLC	542	388679	358961
Baldwins Gate Sewage Treatment Works	Operational	Severn Trent Water Limited	253	380326	339859
Brancote Sewage Treatment Works	Operational	Severn Trent Water Limited	328	395493	322475
Branston Sewage Treatment Works	Operational	Severn Trent Water Limited	507	422531	321097
Burntwood Sewage Treatment Works	Operational	Severn Trent Water Limited	320	407937	308006
Checkley Sewage Treatment Works	Operational	Severn Trent Water Limited	315	403400	337200
Claymills Sewage Treatment Works	Operational	Severn Trent Water Limited	313	426451	325873
Codsall Sewage Treatment works	Operational	Severn Trent Water Limited	349	388307	303629
Coven Heath Sewage Treatment Works	Operational	Severn Trent Water Limited	571	391017	304889
Froghall Sewage Treatment Works	Operational	Severn Trent Water Limited	597	402536	346976
Gospel End Sewage Treatment Works	Operational	Severn Trent Water Limited	574	390395	294381
Great Bridgeford Sewage Treatment Works	Operational	Severn Trent Water Limited	330	388245	327504
Hadley End Farm Sewage Treatment Works	Operational	Severn Trent Water Limited	502	412949	319743
Hilton Park Sewage Treatment works	Operational	Severn Trent Water Limited	568	396346	305507

Adoption version Staffordshire and Stoke-on-Trent Joint Waste Local Plan 2010 - 2026 Appendices

Site Name	Status	Operator	Min Waste		Northing
			Min	Easting	
Hixon Sewage Treatment Works	Operational	Severn Trent Water Limited	374	400189	324598
Leek Sewage Treatment Works	Operational	Severn Trent Water Limited	286	397958	354216
Liverpool Road East Sewage Treatment works	Operational	United Utilities - External Planning Liaison	251	383199	354926
Loggerheads Sewage Treatment Works	Operational	Severn Trent Water Limited	576	373479	336091
Marchington Sewage Treatment works	Operational	Severn Trent Water Limited	350	415700	330300
Newborough Sewage Treatment Works	Operational	Severn Trent Water Limited	229	413440	323670
Newchapel Road Sewage Treatment Works	Operational	United Utilities - External Planning Liaison	252	384774	355567
Red Street Sewage Treatment Works	Operational	United Utilities PLC	562	382864	351453
Roundhill Sewage Treatment Works	Operational	Severn Trent Water Limited	268	387000	284120
Rugeley Sewage Treatment Works	Operational	Severn Trent Water Limited	525	403082	319788
Strongford Sewage Treatment Works	Operational	Severn Trent Water Limited	481	387935	339146
Uftoxeter Sewage Treatment Works	Operational	Severn Trent Water Limited	534	409450	334500
Wheaton Aston Sewage Treatment Works	Operational	Severn Trent Water Limited	554	385507	312644
Wood Eaton Sewage Treatment Works	Operational	Severn Trent Water Limited	570	379438	325073
Yoxall Sewage Treatment Works	Operational	Severn Trent Water Limited	317	414160	318060
Four Ashes Sewage Treatment Works	Operational	Severn Trent Water Limited	615	392847	308491
Ellastone Sewage Treatment Works	Operational	Severn Trent Water Limited	641	411861	342515
Oakamoor Sewage Treatment Works	Operational	Severn Trent Water Limited	620	405424	344860

Site Name	Status	Operator	Min Waste	Easting	Northing
Penkridge Sewage Treatment Works	Operational	Severn Trent Water Limited	744	393498	316146
Cannock Sewage Treatment Works	Operational	Severn Trent Water Limited	747	397497	309072

Appendix 6: Waste Data Tables

The data underpinning Policy 2: Targets and broad locations for waste management facilities, is set out in the following tables. The background to this data is explained in the Evidence Base Reports in Appendix 1: Virtual Library supporting the Joint Waste Local Plan.

Table 17: Estimated Controlled Waste Arisings in Staffordshire and Stoke-on-Trent

Waste Stream	Staffordshire (000s tonnes)	Stoke-on-Trent (000s tonnes)	Total (000s tonnes)	% of Total
Municipal⁽¹⁾	478	136	614	14.7
Commercial and Industrial⁽²⁾	1,200	414	1,614	38.5
Construction, Demolition & Excavation⁽³⁾	1,483	356	1,839	43.9
Agricultural⁽⁴⁾			10	0.2
Hazardous⁽⁵⁾	88	26	114	2.7
Total	3,249	932	4,191	100

1. 2006/07 Waste Data Flow returns (Defra). More recent data is available (refer to Annual Monitoring Reports). Total MSW arising at 2010/11 is 549,000 tonnes but 2006/7 data is used to be consistent with data available for C&I waste.
2. 2006/7 C&I Waste Survey (ADAS)
3. 2009 Update West Midlands Landfill Capacity Study (Scott Wilson). The figure provided is an estimate for 2010/11 taken from Appendix C of the study and is based on Scenario 1 - WMRSS adjusted for economic impact.
4. 2003 Agricultural waste estimates (EA) apportioned by Staffordshire 's contribution to the 1998 regional total of controlled waste. Figures available for Staffordshire and Stoke-on-Trent combined only
5. 2008 Hazardous Waste Interrogator (EA)

Table 18: Permitted waste management facilities in Staffordshire and Stoke-on-Trent as at 1 May 2012⁽¹⁾

	Recycling	Organic Treatment	Residual Treatment	Transfer Station	Aggregate Recycling	Landfill	Total
Staffordshire	62	13	11	74	22	21	203
Stoke-on-Trent	24	1	4	28	5	3	65
Total	86	14	15	102	27	24	268

1. Source: Various including SCC database of Planning Permissions and EA 2008 & 2009 RATS data plus stakeholder comments. Exempt sites from licensing have not been included.

Table 19: Permitted capacity (tonnes) of waste management facilities in Staffordshire and Stoke-on-Trent at 1 May 2012⁽¹⁾

	Recycling	Organic Treatment	Residual Treatment	Transfer Station	Aggregate Recycling	Landfill
Staffordshire	888,970	522,595	544,843	1,332,730	708,401	
Stoke-on-Trent	523,193	39,784	335,952	429,761	312,039	
Total	1,412,163	562,379	880,795	1,762,491	1,020,440	34,472,000

1. Source: Various including SCC database of Planning Permissions and EA 2008 & 2009 RATS data plus stakeholder comments. Exempt sites from licensing have not been included.

Table 20: Regional waste forecasts (tonnes) and regional targets for landfill diversion (% and tonnes) for Municipal (MSW) and Commercial & Industrial (C&I) waste streams for the Staffordshire and Stoke-on-Trent sub-region. ⁽¹⁾

	2010/11	2015/16	2020/21	2025/26
MSW Regional waste forecast (tonnes)	718,000 tonnes	744,000 tonnes	771,000 tonnes	799,000 tonnes
MSW Minimum diversion %rate / Maximum landfill % rate	68% Min. diversion from landfill	75% Min. diversion from landfill	80% Min. diversion from landfill	80% Min. diversion from landfill
MSW Minimum diversion tonnes / Maximum landfill tonnes	32% Max. landfill	25% Max. landfill	20%Max. landfill	20%Max. landfill
C&I Regional waste forecast	491,000tonnes min. diversion from landfill	559,000 tonnes min. diversion from landfill	613,000 tonnes min. diversion from landfill	636,000 tonnes min. diversion from landfill
C&I Minimum diversion %rate /	227,000tonnes max. landfill	185,000 tonnes max. landfill	158,000tonnes max. landfill	163,000tonnes max. landfill
	1,518,000 tonnes	1,755,000 tonnes	2,245,000 tonnes	2,245,000 tonnes
	65% Min. diversion from landfill	70% Min. diversion from landfill	75% Min. diversion from landfill	75% Min. diversion from landfill
	35% Max. landfill	30% Max. landfill	25%Max. landfill	25% Max. landfill

Adoption version Staffordshire and Stoke-on-Trent Joint Waste Local Plan 2010 - 2026 Appendices

	2010/11		2015/16		2020/21		2025/26	
Maximum landfill % rate								
C&I Minimum diversion tonnes / Maximum landfill tonnes	987,000 tonnes min. diversion from landfill	531,000 tonnes max. landfill	1,229,000 tonnes min. diversion from landfill	526,000tonnes max. landfill	1,684,000tonnes min. diversion from landfill	561,000tonnes max. landfill	1,684,000tonnes min. diversion from landfill	561,000tonnes max. landfill
Combined Regional waste forecast (MSW & C&I)	2,236,000 tonnes		2,499,000 tonnes		3,016,000 tonnes		3,044,000 tonnes	
Combined Minimum diversion tonnes / Maximum landfill tonnes	1,478,000 tonnes min. diversion from landfill	758,000tonnes max. landfill	1,788,000tonnes min. diversion from landfill	711,000tonnes max. landfill	2,297,000tonnes min. diversion from landfill	719,000tonnes max. landfill	2,320,000tonnes min. diversion from landfill	724,000tonnes max. landfill

1. Source: West Midlands Regional Spatial Strategy Phase 2 Review, Quality of the Environment Part 4 Waste Policies, Policy W2 Tables 5 and 6 (MSW and C&I waste diversion by Waste Planning Authority).

Table 21: Growth predictions, landfill predictions and landfill diversion/recovery targets for Construction, Demolition & Excavation (CD&E) waste (tonnes) for the sub-region of Staffordshire and Stoke-on-Trent. ⁽¹⁾

	2010/11	2015/16	2020/21	2025/26
Regional growth prediction for CD&E waste (tonnes)	1,839,000	1,345,000	1,330,000	1,318,000
Regional landfill projections for CD&E waste (tonnes)	129,000	79,000	78,000	77,000
European Waste Framework Directive (WFD) target of minimum 70% recovery of predicted CD&E waste (tonnes)	1,287,000	942,000	931,000	923,000
WFD target of maximum 30% landfill of predicted CD&E waste (tonnes)	552,000	403,000	399,000	395,000

1. Source: Growth predictions and landfill projections taken from 2009 Update West Midlands Landfill Capacity Study by Scott Wilson, Appendix C Scenario 1 – WMRSS adjusted for economic impact. Recovery % target taken from European Waste Framework Directive 2008/98/EC as translated into The Waste (England and Wales) Regulations 2011, Part 2, 11(2).

Adoption version Staffordshire and Stoke-on-Trent Joint Waste Local Plan 2010 - 2026 Appendices

Table 22: New waste capacity requirements for Municipal (MSW) and Commercial and Industrial (C&I) waste streams in line with RSS Phase 2 Review targets. ⁽¹⁾

	2010/11	2015/16	2020/21	2025/26
Minimum future capacity need (tonnes)				
MSW Total minimum diversion from landfill	68% diversion = 491,000	75% diversion = 559,000	80% diversion = 613,000	80% diversion = 636,000
MSW Recycling (59% of non-residual. Note that the non-residual/non-recovered waste accounts for 67% of total MSW)	146,041	195,358	239,751	248,747
MSW Organic Treatment (41% of non-residual)	102,893	137,639	168,916	175,253
MSW Residual Treatment (33% of total MSW)	242,066	226,003	204,333	212,000
C&I Total minimum diversion from landfill	65% diversion = 987,000	70% diversion = 1,229,000	75% diversion = 1,684,000	75% diversion = 1,684,000
C&I Recycling (83% of non-residual. Note that the non-residual/non-recovered waste accounts for 84% of total)	688,136	856,859	1,174,085	1,174,085
C&I Organic Treatment (17% of non-residual)	140,944	175,501	240,475	240,475
C&I Residual Treatment (16% of total C&I)	157,920	196,640	269,440	269,440
Combined Total minimum diversion from landfill	1,478,000	1,788,000	2,297,000	2,320,000
Combined MSW and C&I Recycling	834,178	1,052,217	1,413,836	1,422,831
Combined MSW and C&I Organic Treatment	243,836	313,140	409,391	415,729

Adoption version Staffordshire and Stoke-on-Trent Joint Waste Local Plan 2010 - 2026 Appendices

	2010/11	2015/16	2020/21	2025/26
Combined MSW and C&I Residual Treatment	399,986	422,643	473,773	481,440
Existing infrastructure capacity at 1 May 2012 (tonnes)				
Recycling	1,412,163	1,412,163	1,412,163	1,412,163
Organic Treatment	562,379	562,379	562,379	562,379
Residual Treatment	880,795	880,795	880,795	880,795
Estimated minimum future capacity gap (tonnes) (Note that figures in brackets equate to an excess)				
Recycling	(577,985)	(359,946)	1,673	10,668
Organic Treatment	(318,543)	(249,239)	(152,988)	(146,650)
Residual Treatment	(480,809)	(458,152)	(407,022)	(399,355)
Note despite excess in organic treatment, in order to be able meet WCA/WDA requirements to manage co-collected municipal green and kitchen waste 60,000 - 80,000 tpa of IVC or similar technology is required by 2020			80,000	
Minimum number of average sized facilities required				
Recycling	n/a	n/a	n/a	1 facility
Organic Treatment	n/a	n/a	2 - 3 facilities	n/a
Residual Treatment	n/a	n/a	n/a	n/a

	2010/11	2015/16	2020/21	2025/26
Minimum land take requirements (hectares)				
Recycling	n/a	n/a	n/a	Typical landtake 0.9 ha
Organic Treatment	n/a	n/a	0.9 - 3.9 ha (dependent on facility type - AD (0.9 ha) or IVC (1.3 ha))	n/a
Residual Treatment	n/a	n/a	n/a	n/a

- Source: Waste forecasts from West Midlands RSS Phase 2 Revision, Quality of the Environment Part 4 - Waste Policies, Tables 5 and 6. Calculation used for broad type of waste management is based on methodology developed for the Advantage West Midlands (AWM) Study 'Business Waste: Our Future Resource March 2008. For MSW 67% is proportioned for recycling and organic treatment and 33% proportioned for residual recovery. Of the 67%, a split of 59% recycling and 41% organic treatment was calculated. For broad type of C&I waste management 84% recycling (including organic treatment) and 16% residual recovery was applied. Of the 84%, a split of 83% recycling and 17% organic treatment was calculated. For further details of methodology refer to 'Evidence Base Report 2 - Managing Municipal and Commercial & Industrial waste' in 'Appendix 1: Virtual Library'. Calculations for number of facilities is based on 'London Plan' facility and land take size figures <http://www.london.gov.uk/mayor/planning/strategy.jsp>.

Table 23: Revised local targets for landfill diversion (% and tonnes) for Municipal (MSW) and Commercial and Industrial (C&I) waste streams for the Staffordshire and Stoke-on-Trent sub-region.

	2010/11		2015/16		2020/21		2025/26	
MSW Regional waste forecast (tonnes)	718,000 tonnes	744,000 tonnes	771,000 tonnes	771,000 tonnes	771,000 tonnes	799,000 tonnes	799,000 tonnes	799,000 tonnes
MSW Minimum diversion / Maximum landfill % rate	75% Min. diversion from landfill	95% Min. diversion from landfill	100% diversion from landfill	5% Max. primary landfill	100% diversion from landfill	100% diversion from landfill	100% diversion from landfill	0% primary landfill
MSW Minimum diversion tonnes / Maximum landfill tonnes	538,500tonnes min. diversion from landfill	706,800tonnes min. diversion from landfill	771,000tonnes diversion from landfill	37,200tonnes max. primary landfill	771,000tonnes diversion from landfill	799,000tonnes min. diversion from landfill	799,000tonnes min. diversion from landfill	0 tonnes primary landfill
C&I Regional waste forecast	1,518,000 tonnes	1,755,000 tonnes	2,245,000 tonnes	2,245,000 tonnes	2,245,000 tonnes	2,245,000 tonnes	2,245,000 tonnes	2,245,000 tonnes
C&I Minimum diversion / Maximum landfill % rate	75% Min. diversion from landfill	95% Min. diversion from landfill	100% diversion from landfill	5% Max. primary landfill	100% diversion from landfill	100% diversion from landfill	100% diversion from landfill	0% primary landfill
C&I Minimum diversion tonnes / Maximum landfill tonnes	1,138,500tonnes min. diversion from landfill	1,667,250tonnes min. diversion from landfill	2,245,000tonnes diversion from landfill	87,750tonnes max. primary landfill	2,245,000tonnes diversion from landfill	2,245,000tonnes min. diversion from landfill	2,245,000tonnes min. diversion from landfill	0 tonnes primary landfill
Combined Regional waste forecast (MSW & C&I)	2,236,000 tonnes	2,499,000 tonnes	3,016,000 tonnes	3,016,000 tonnes	3,016,000 tonnes	3,016,000 tonnes	3,016,000 tonnes	3,016,000 tonnes
Combined Minimum diversion tonnes / Maximum landfill tonnes	1,677,000tonnes min. diversion from landfill	2,374,050tonnes min. diversion from landfill	3,016,000tonnes diversion from landfill	124,950tonnes max. primary landfill	3,016,000tonnes diversion from landfill	3,016,000tonnes diversion from landfill	3,016,000tonnes min. diversion from landfill	0 tonnes primary landfill

Adoption version Staffordshire and Stoke-on-Trent Joint Waste Local Plan 2010 - 2026 Appendices

Table 24: New waste capacity requirements for Municipal (MSW) and Commercial and Industrial (C&I) waste streams in line with revised local landfill diversion targets. ⁽¹⁾

	2010/11	2015/16	2020/21	2025/26
Minimum future capacity need (tonnes)				
MSW Total minimum diversion from landfill	75% diversion = 538,500	95% diversion = 706,800	100% diversion = 771,000	100% diversion = 799,000
MSW Recycling (59% of non-residual waste. Note that the non-residual/non-recovered waste accounts for 50% of total MSW)	158,858	208,506	227,445	235,705
MSW Organic Treatment (41% of non-residual)	110,392	144,894	158,055	163,795
MSW Residual Treatment (50% of total MSW)	269,250	353,400	385,500	399,500
C&I Total minimum diversion from landfill	75% diversion = 1,138,500	95% diversion = 1,667,250	100% diversion = 2,245,000	100% diversion = 2,245,000
C&I Recycling	793,762	1,162,407	1,565,214	1,565,214
C&I Organic Treatment	162,578	238,083	320,586	320,586
C&I Residual Treatment	182,160	266,760	359,200	359,200
Combined Total minimum diversion from landfill	1,677,000	2,374,050	3,016,000	3,044,000
Combined MSW and C&I Recycling	952,620	1,370,913	1,792,659	1,800,919
Combined MSW and C&I Organic Treatment	272,970	382,977	478,641	484,381

Adoption version Staffordshire and Stoke-on-Trent Joint Waste Local Plan 2010 - 2026 Appendices

	2010/11	2015/16	2020/21	2025/26
Combined MSW and C&I Residual Treatment	451,410	620,160	744,700	758,700
Existing infrastructure capacity at 1 May 2012 (tonnes)				
Recycling	1,412,163	1,412,163	1,412,163	1,412,163
Organic Treatment	562,379	562,379	562,379	562,379
Residual Treatment	880,795	880,795	880,795	880,795
Estimated minimum future capacity gap (tonnes)				
(Note that figures in brackets equate to an excess)				
Recycling	(459,543)	(41,250)	380,496 Equiv 6 - 7 facilities (average 55,000tpa) and 5.4 - 6.3 ha	388,756 Equiv 7 - 8 facilities (average 55,000tpa) and 6.3 - 7.2 ha
Organic Treatment	(289,409)	(179,402)	(83,738)	(77,998)
Residual Treatment	(429,385)	(260,635)	(136,095)	(122,095)
Note despite excess in organic treatment, in order to be able meet WCA/WDA requirements to manage co-collected municipal green and kitchen waste 60,000 - 80,000 tpa of IVC or similar technology is required by 2020			80,000	
Minimum number of average sized facilities required				
Recycling	n/a	n/a	6 - 7 facilities	7 - 8 facilities

	2010/11	2015/16	2020/21	2025/26
Organic Treatment	n/a	n/a	2 - 3 facilities	n/a
Residual Treatment	n/a	n/a	n/a	n/a
Minimum land take requirements (hectares)				
Recycling	n/a	n/a	5.4 - 6.3 ha	6.3 - 7.2 ha
Organic Treatment	n/a	n/a	0.9 - 3.9 ha (dependent on facility type - AD (0.9 ha) or IVC (1.3 ha))	n/a
Residual Treatment	n/a	n/a	n/a	n/a

1. Source: Waste forecasts from West Midlands RSS Phase 2 Revision, Quality of the Environment Part 4 - Waste Policies, Tables 5 and 6. Calculation for MSW broad type of waste management taken from Staffordshire and Stoke-on-Trent Joint Municipal Waste Management Strategy (2007) i.e. 50% recycling or organic treatment and 50% recovery. Of the 50% recycling/organic treatment split, a split of 59% recycling and 41% organic treatment was calculated. Calculation used for C&I broad type of waste management is based on methodology developed for the Advantage West Midlands (AWM) Study 'Business Waste: Our Future Resource March 2008. 84% recycling (including organic treatment) and 16% residual recovery. Of the 84%, a split of 83% recycling and 17% organic treatment was calculated. For further details of methodology refer to 'Revised Evidence Base Report for Policy 2.1 and Policy 2.2' in 'Appendix 1: Virtual Library'. Calculations for number of facilities is based on 'London Plan' facility and land take size figures <http://www.london.gov.uk/mayor/planning/strategy.jsp>.

Table 25: New waste capacity requirements for Construction, Demolition & Excavation (CD&E) waste recovery and Hazardous waste treatment. ⁽¹⁾

	2010/11	2015/16	2020/21	2025/26
Regional growth prediction for CD&E waste (tonnes)	1,839,000	1,345,000	1,330,000	1,318,000

Adoption version Staffordshire and Stoke-on-Trent Joint Waste Local Plan 2010 - 2026 Appendices

	2010/11	2015/16	2020/21	2025/26
European Waste Framework Directive (WFD) target of minimum 70% recovery of predicted CD&E waste (tonnes)	1,287,000	942,000	931,000	923,000
WFD target of maximum 30% landfill of predicted CD&E waste (tonnes)	552,000	403,000	399,000	395,000
Existing CD&E recycling capacity at 1 May 2012 (tonnes)	1,020,440	1,020,440	1,020,440	1,020,440
Minimum future recycling capacity need (tonnes) (Note that figures in brackets equate to an excess)	266,560	(78,440)	(89,440)	(97,440)
Minimum number of average sized CDE recycling facilities required	n/a	n/a	Local target of 200,000 tonnes required by 2020 in view of data and trends and to allow for loss of facilities tied to the life of landfill permissions. 2 - 4 facilities required with a throughput of 50,000 - 100,000 tonnes per annum.	n/a
Minimum land take requirements (hectares)	n/a	n/a	Difficult to quantify. An average facility is between 2 - 4 hectares in size with a throughput of 50,000 - 100,000 tonnes per annum	n/a

- Source: CD&E recovery targets taken from European Waste Framework Directive 2008/98/EC as translated into the Waste (England and Wales) Regulations 2011, Part 2, 11(2). Refer to 'Evidence Base Report 3 - Managing Construction, Demolition and Excavation waste' as updated by 'Revised Evidence Base Report for Policy 2.1 and Policy 2.2' in Appendix 1: Virtual Library

Table 26: Landfill requirements for Municipal (MSW) and Commercial and Industrial (C&I) and Construction, Demolition & Excavation (CD&E) waste streams.⁽¹⁾

	2010/11	2015/16	2020/21	2025/26
MSW. Maximum primary landfill allowance of 25% at 2010/11. At 2015/16 max. 5% primary landfill and 5% secondary landfill (of total waste arising). Then secondary landfill allowance (10% of total waste arising) for the remainder of plan period up to 2025/26.	179,500	74,400	77,100	79,900
C&I. Maximum primary landfill allowance of 25% at 2010/11. At 2015/16 max. 5% primary landfill and 5% secondary landfill (of total waste arising). Then secondary landfill allowance (10% of total waste arising) for the remainder of plan period up to 2025/26.	379,500	175,500	224,500	224,500
CD&E. Maximum 30% landfill (WFD recovery target) of predicted CD&E waste (tonnes)	552,000	403,000	399,000	395,000

- Source: Waste forecasts for MSW and C&I waste taken from West Midlands RSS Phase 2 Revision, Quality of the Environment Part 4 - Waste Policies, Tables 5 and 6. Growth predictions for CD&E waste taken from 2009 Update West Midlands Landfill Capacity Study by Scott Wilson, Appendix C Scenario 1 – WMRSS adjusted for economic impact.

Adoption version Staffordshire and Stoke-on-Trent Joint Waste Local Plan 2010 - 2026 Appendices

Table : 27: Strategic Priorities for the Waste Disposal Authority and Waste Collection Authorities, 2011 ⁽¹⁾

Strategic priorities
Material recycling (mechanical sorting) facilities on a rough split for Northern Staffordshire / Southern Staffordshire. Ideal location would be at Stoke and a central/south-eastern Staffordshire location (e.g. Four Ashes, Cannock, Burton or Tamworth) and of a facility size each capable of processing 50,000 to 100,000 tonnes per annum.
New Organic Waste Treatment facilities throughout Staffordshire capable of processing mixed garden waste and food waste (in-vessel composting or new technology – e.g. advanced anaerobic digestion – ‘wet’ process, not the ‘dry’ process).
Staffordshire Moorlands and Stoke-on-Trent currently use a facility in Derbyshire (Ashbourne) and may benefit from a more local facility. Lichfield, East Staffordshire, Tamworth and Cannock currently use facilities in South Staffordshire (Shareshill) and at Derbyshire (Etwell) and may benefit from an additional local facility nearer to Tamworth. Stafford and South Staffordshire do not currently require in-vessel composting facilities but their collection strategy may change in the future. Newcastle-under-Lyme have a collection strategy involving separate collection of food and garden waste and are currently reliant on existing anaerobic digestion and open windrow composting facilities.
Replacement or renewal of the existing waste transfer station arrangements for Burton
New waste transfer station near Burntwood for the bulking and transfer of municipal waste to the Four Ashes Energy Recovery Facility
Replacement household waste recycling centre near Newcastle-under-Lyme
Replacement household waste recycling centre near Lichfield
Replacement household waste recycling centre near Burton
New trade waste recycling centre network for Staffordshire.
Consideration should be given to identifying the edge-of-town centre retail parks, home improvement superstores, and builders merchants as potentially suitable sites for new Household Waste Recycling Centres and Trade Waste Recycling Centres.

Strategic priorities
Potential requirement for new household waste recycling centres to support several areas in Staffordshire where major household growth is expected (e.g. north of Lichfield, near Fradely)
Replacement or renewal of the existing Energy Recovery Facility at Hanford, Stoke-on-Trent (contract ends 2020 and a commissioning cycle will need to commence circa 2013)

1. Source: Waste Disposal Authority May 2011. Strategic priorities reflected in recent action plans that support the Joint Municipal Waste Management Strategy.

Appendix 7: National Planning Policy

Local policies should not repeat national and regional policy but should be based on delivering outcomes of the Vision. When the plan was prepared national planning policy took the form of Planning Policy Guidance Notes and Planning Policy Statements, these were replaced on the 27th March 2012 by the National Planning Policy Framework (NPPF). All of the PPS and PPGs were replaced by the NPPF, with the exception of PPS10 – Planning for Sustainable Waste Management. The Joint Waste Core Strategy has been assessed against the policies contained within the NPPF and it is considered by both Councils to be in conformity. The table below lists a number of topics relevant to the planning of waste development and identifies national and regional policy associated with those topics. In particular Broad Policy area 4: Sustainable design and protection and improvement of environmental quality, should be cross referenced to the policy listed in the table below. It should also be noted that as waste development management policies are not contained within the NPPF, PSS10 remains in force until the National Waste Management Plan is adopted.

In respect of the status of regional policy, the Phase 2 Revision (including waste policies) of the West Midlands Regional Strategy has not been adopted and at present the Joint Waste Core Strategy needs to conform with the adopted West Midlands Regional Spatial Strategy (RSS). When the coalition government came to power it announced an intention to abolish RSSs. Following a number of legal rulings it has been confirmed that at present the RSS remains in force and will not be formally withdrawn until an Environmental Impact Assessment into its proposed removal is complete.

Table 28: National and Regional Policy

Topic	Relevant National and Regional Planning Policy
People and local communities including the potential health effects	<ul style="list-style-type: none"> • Consider factors listed in Annex E to PPS10 and paragraph 29 of PPS10; • NPPF – Chapter 11 – Conserving and enhancing the natural environment – Para 109-125
Historic environment	<ul style="list-style-type: none"> • NPPF –Chapter 12 - Conserving and Enhancing the historic environment: Para 126-141

<p>Natural environment (Cannock Chase Area of Outstanding Natural Beauty (AONB); and Peak District National Park)</p>	<ul style="list-style-type: none"> ● NPPF – Chapter 11 – Conserving and enhancing the natural environment – Para 109-125 ● NPPF – Chapter 13 – Supporting a prosperous rural economy – Para 28S.85 duty under Countryside and Rights of Way Act 2000 to have regard to the AONB which is locally expressed in the AONB Management Plan.
<p>Biodiversity and geodiversity and wider environment</p>	<ul style="list-style-type: none"> ● NPPF – Chapter 11 – Conserving and enhancing the natural environment – Para 109-125
<p>The Countryside</p>	<ul style="list-style-type: none"> ● NPPF – Chapter 11 – Conserving and enhancing the natural environment – Para 109-125 ● NPPF – Chapter 13 – Supporting a prosperous rural economy – Para 28
<p>The Landscape</p>	<ul style="list-style-type: none"> ● NPPF – Chapter 11 – Conserving and enhancing the natural environment – Para 109-125 ● NPPF – Chapter 13 – Supporting a prosperous rural economy – Para 28
<p>The Green Belt</p>	<ul style="list-style-type: none"> ● NPPF – Chapter 9 – Protecting Green Belt land – Para 79-92 ● Paragraph 3 of PPS10 and 8.17 of the companion guide ● Draft policy W7 of the Regional Spatial Strategy
<p>The highway network and other public rights of way</p>	<ul style="list-style-type: none"> ● NPPF – Chapter 4 – Promoting sustainable transport – Para 29-41 ● DfT Circular 2/2007: Planning and the Strategic Road Network

Adoption version Staffordshire and Stoke-on-Trent Joint Waste Local Plan 2010 - 2026 Appendices

Open space (including recreational & sporting facilities)	<ul style="list-style-type: none"> NPPF – Chapter 8 – Promoting healthy communities – Para 69-78
Protection of air, soil and water and reduction of flood risk	<ul style="list-style-type: none"> NPPF – Chapter 10 – Meeting the challenge of climate change, flooding and coastal change – Para 93-108
Agricultural land	<ul style="list-style-type: none"> NPPF – Chapter 13 – Supporting a prosperous rural economy – Para 28
Trees, hedgerows and woodland	<ul style="list-style-type: none"> NPPF – Chapter 11 – Conserving and enhancing the natural environment – Para 109-125
Legal agreements	<ul style="list-style-type: none"> NPPF – Planning conditions and obligations – Para 203-206
Time limits for waste treatment facilities on landfill/ mineral sites	<ul style="list-style-type: none"> Technical Guidance to the NPPF – Restoration and aftercare of mineral sites Para 33-51
Reclamation of waste management sites	<ul style="list-style-type: none"> Technical Guidance to the NPPF – Restoration and aftercare of mineral sites Para 33-51
Sustainable Design	<ul style="list-style-type: none"> NPPF – Achieving sustainable development – Para 6-16 NPPF – Chapter 7 – Requiring good design – Para 56-68
Climate change	<ul style="list-style-type: none"> NPPF – Chapter 10 – Meeting the challenge of climate change, flooding and coastal change – Para 93-108
Land stability	<ul style="list-style-type: none"> NPPF – Chapter 11 – Conserving and enhancing the natural environment – Para 109-125 Technical Guidance to the NPPF – Stability in surface mine workings and tips Para 32

Noise	<ul style="list-style-type: none"> • NPPF – Chapter 11 – Conserving and enhancing the natural environment – Para 109-125 • Technical Guidance to the NPPF – Noise emissions Para 28-31
Dust	<ul style="list-style-type: none"> • NPPF – Chapter 11 – Conserving and enhancing the natural environment – Para 109-125 • Technical Guidance to the NPPF – Dust emissions Para 23-27
Unauthorised development of waste management facilities	<ul style="list-style-type: none"> • NPPF – Enforcement – Para 207

For more information please contact:

Staffordshire County Council
Planning, Policy & Development Control
Office address: No 1 Staffordshire Place
Stafford ST16 2LP
Postal Address: Wedgewood Building
Block A, Tipping Street, Stafford ST16 2DH
Tel: 01785 (27) 7293
E-mail: planning@staffordshire.gov.uk

Stoke-on-Trent City Council
Civic Centre
Glebe Street
Stoke-on-Trent ST4 1RN
Tel: 01782 232353
E-mail: stoke.idf@stoke.gov.uk