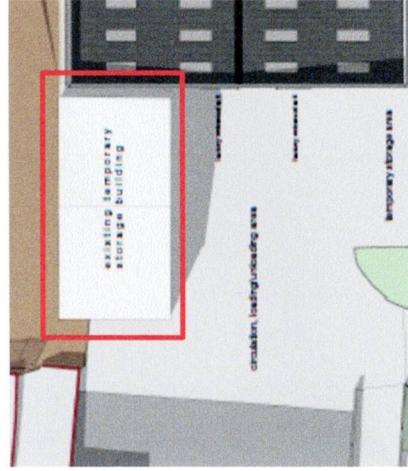
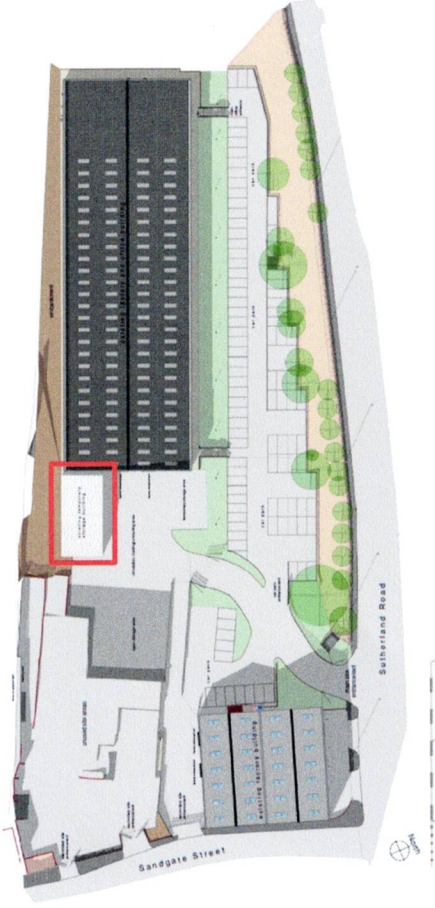


Proposed Facility Modifications

Proposed Modification 3: Concrete Pad – LEV (Local Exhaust Ventilation) System Equipment Installation. Concrete Pad.



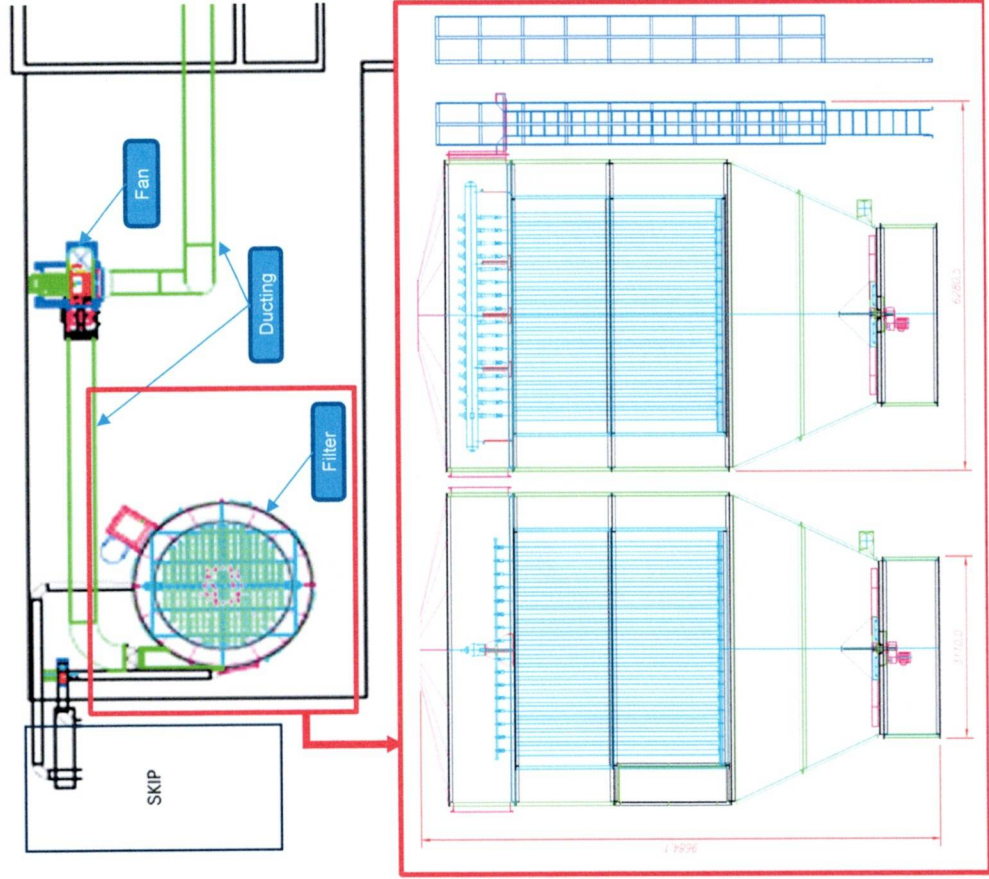
Modification Action – To install a LEV system filter, fan and connecting ducting to the concrete pad located in front of the compressor room (external facility entrance). All equipment will be floor mounted using special purpose mounting bolting.

Modification Purpose – To enable the installation of the LEV system which extracts wood chippings / dust from the manufacturing assets which exhausts to an external skip.

Proposed Facility Modifications

Document: 4

Proposed Modification 3: Concrete Pad - LEV (Local Exhaust Ventilation) System Equipment

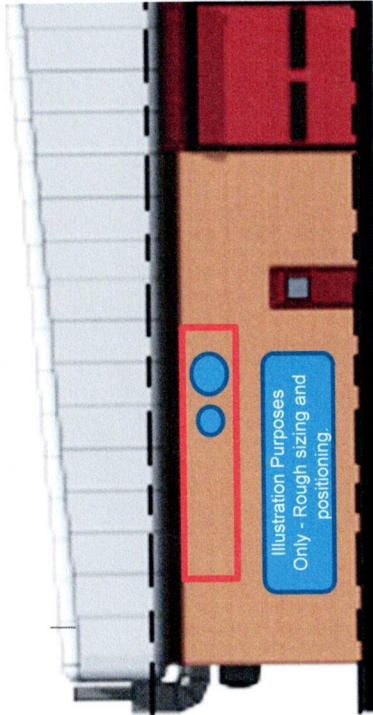
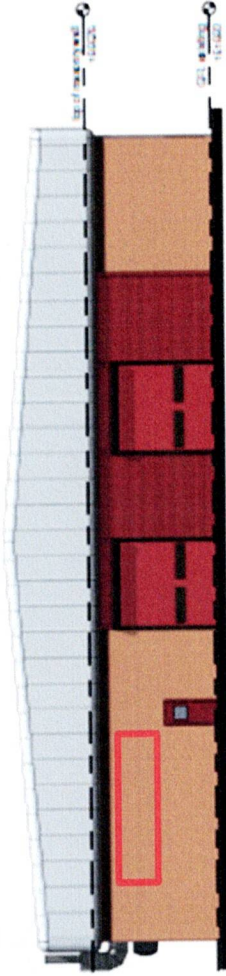


Concrete Pad – Rough equipment positioning.

Concrete Pad – Basic Filter dimensions

Proposed Facility Modifications

Proposed Modification 4: Facility External Wall – LEV (Local Exhaust Ventilation) System Ducting.



Modification Action – To create an 800mm diameter opening in the facility wall into the compressor room. Also, creating an opening of the same diameter through the compressor room wall into the factory. This to house the LEV system which connects the asset extraction to the external fan located on the concrete pad in front of the compressor room.

Modification Action - To create a second diameter opening of 560mm in the facility wall into the compressor room. Also, creating an opening of the same diameter through the compressor room wall into the factory. This to accommodate a system capacity increase and house an additional duct. This connecting additional assets extraction to a second external fan. *Note* This modification will not be carried out until a later date. Therefore, not illustrated on bottom left hand view.

Modification Purpose – To install the LEV System enabling the extraction of wood chippings / dust from the machinery to external wood waste skip.

